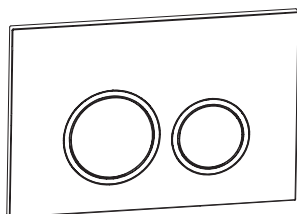
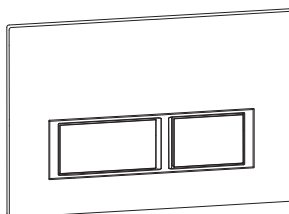


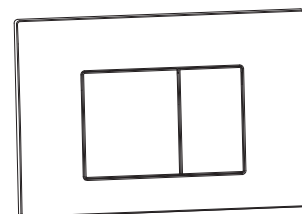
INSTALLATION INSTRUCTIONS



CTA11



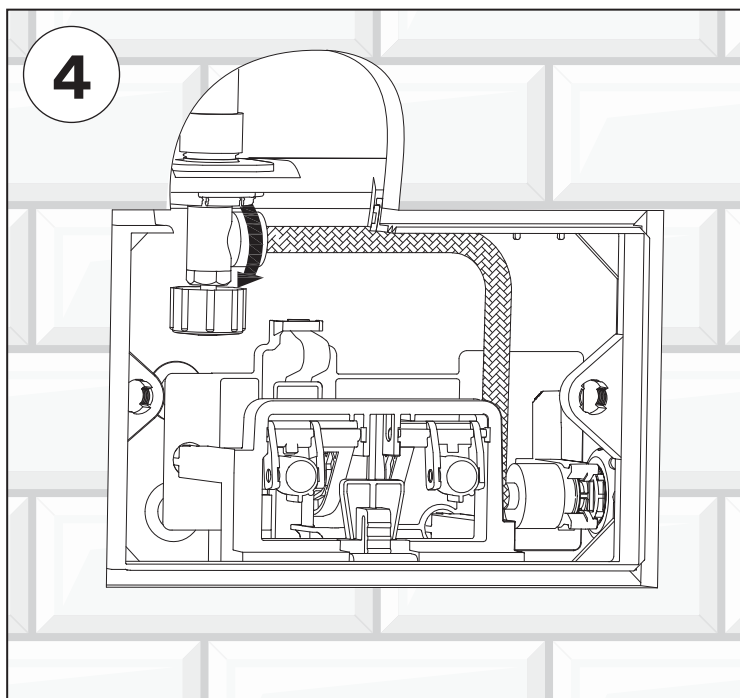
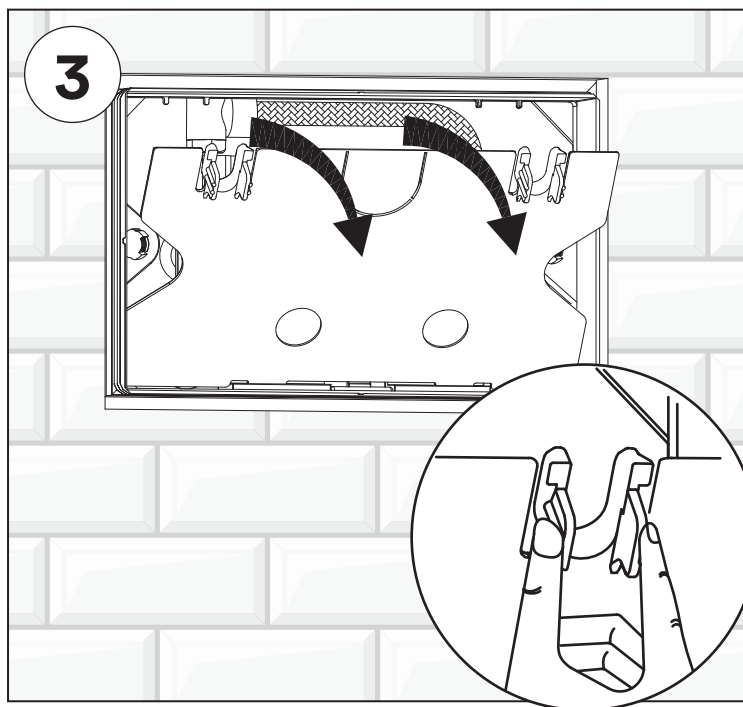
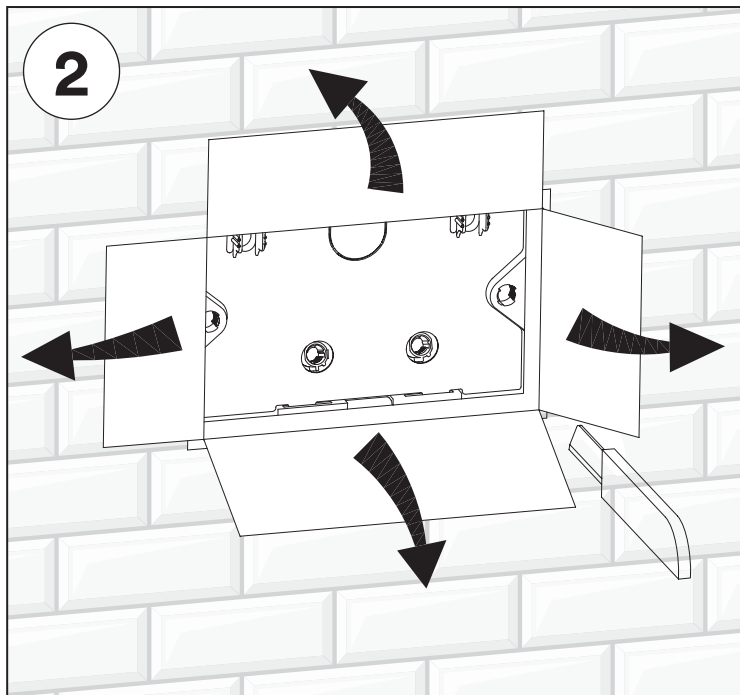
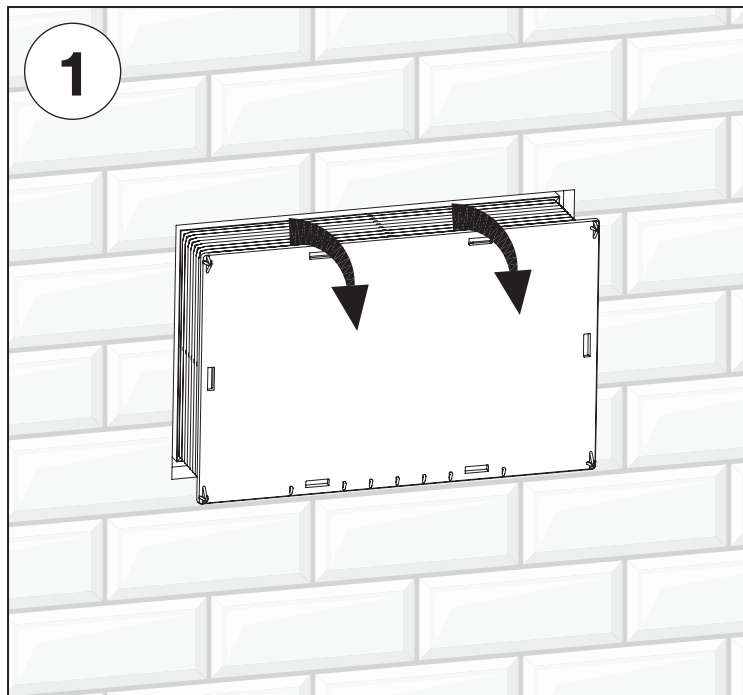
CTA12



CTA09

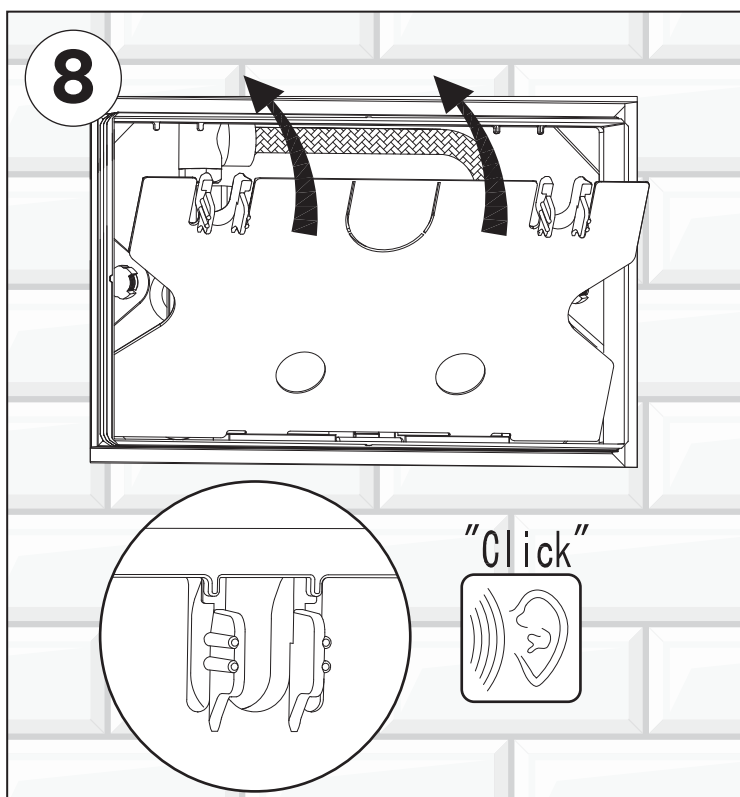
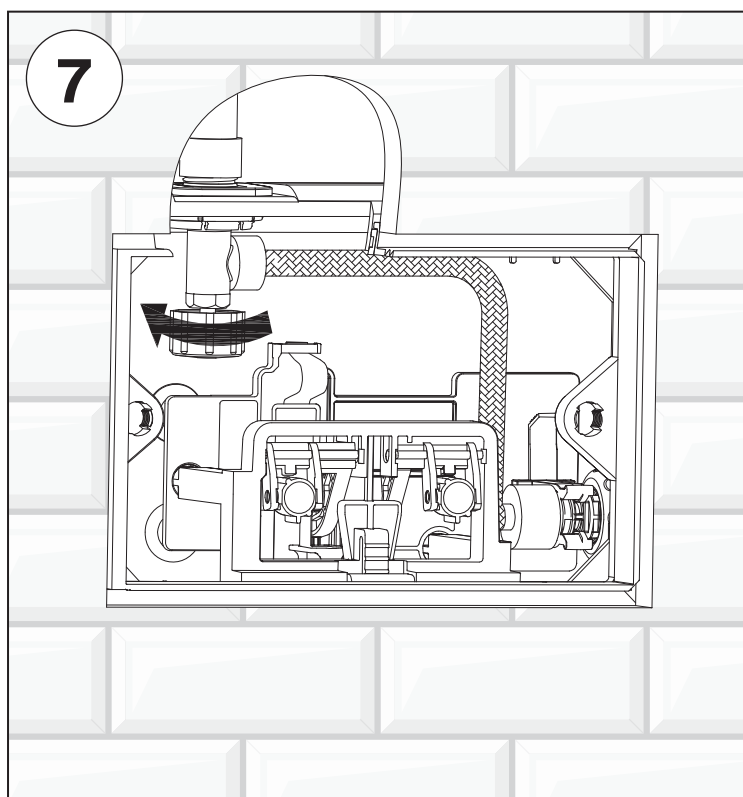
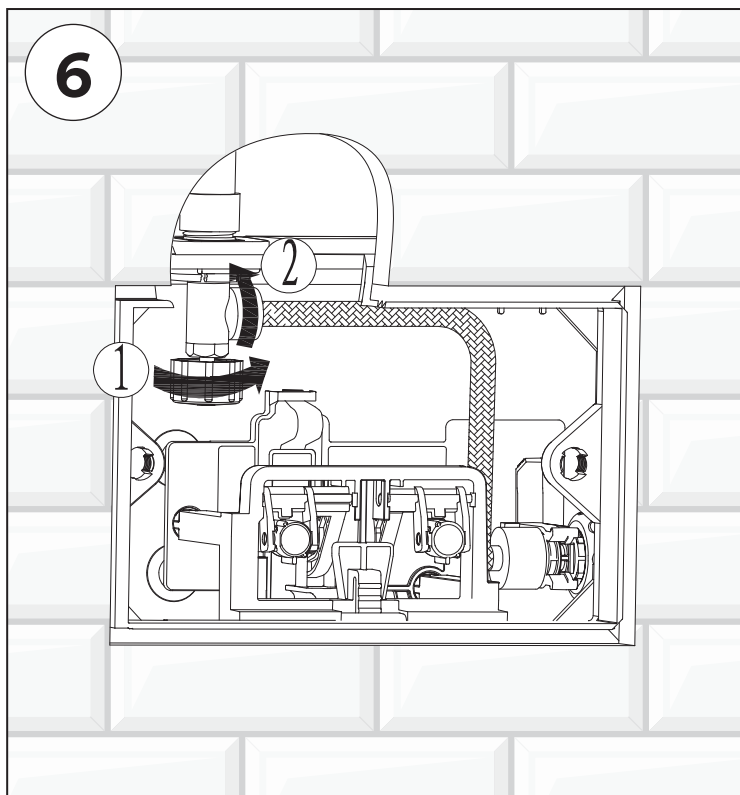
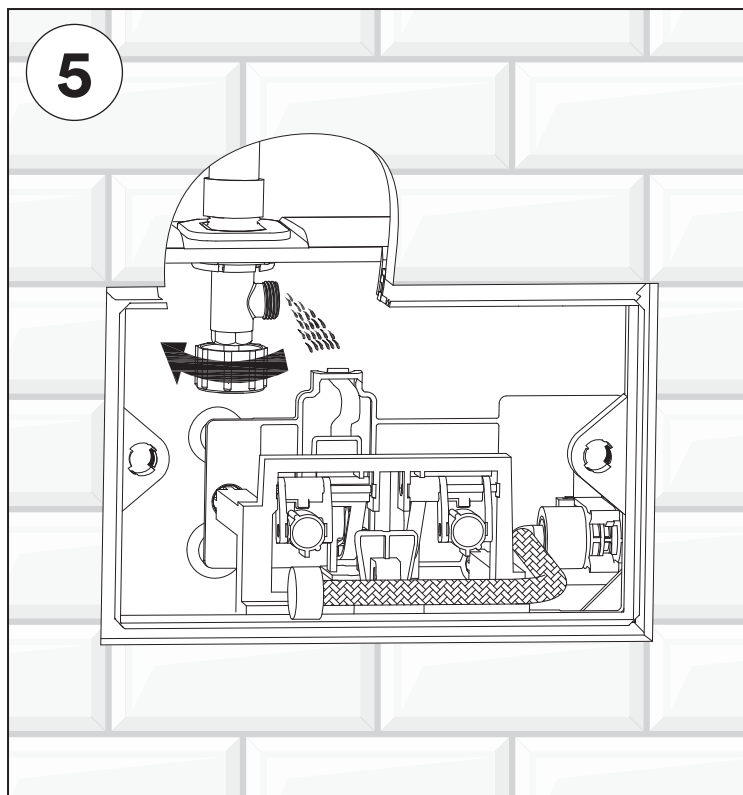
NebulaTM CONCEALED TANKS
NEBULATM COLLECTION

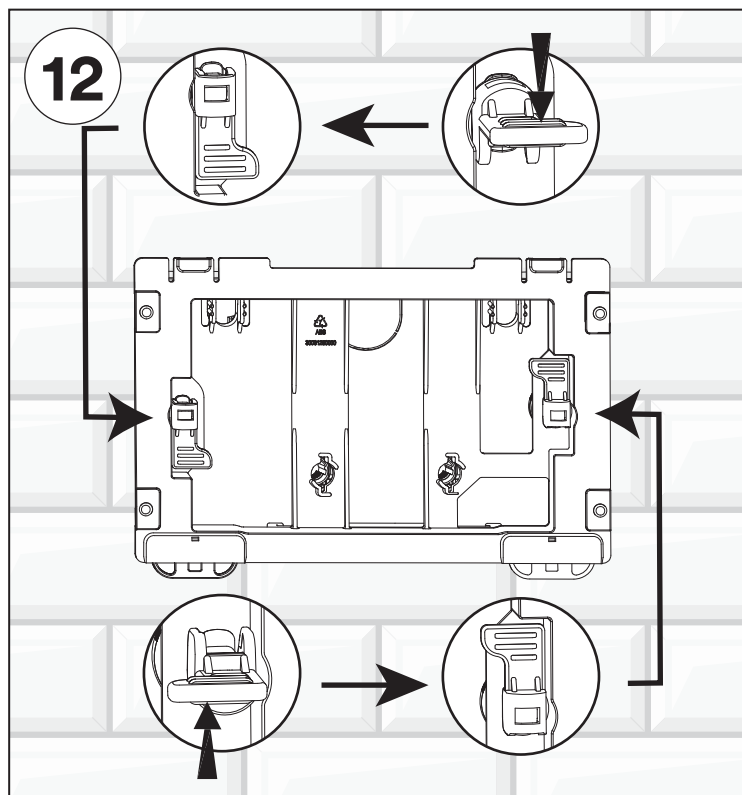
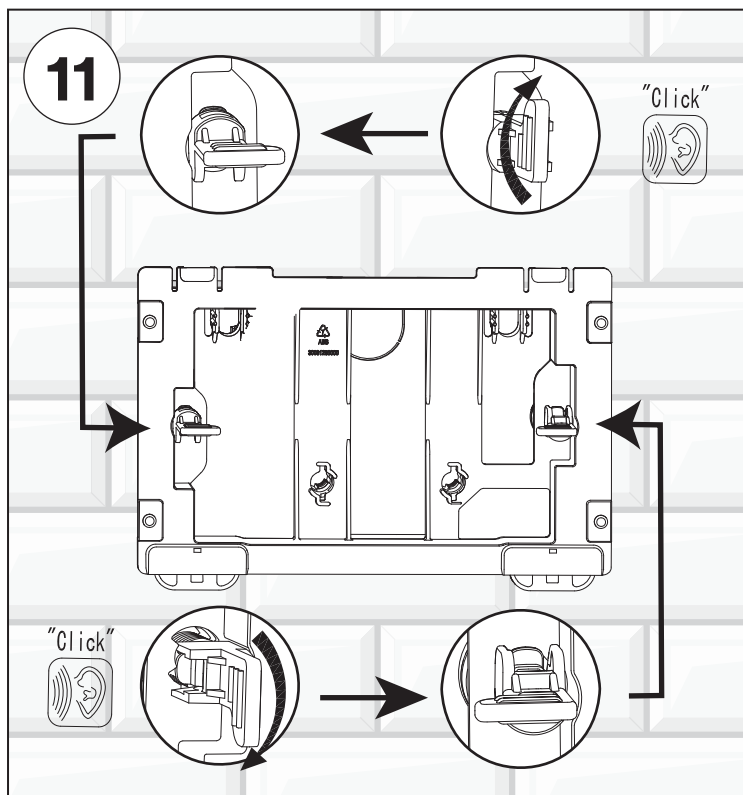
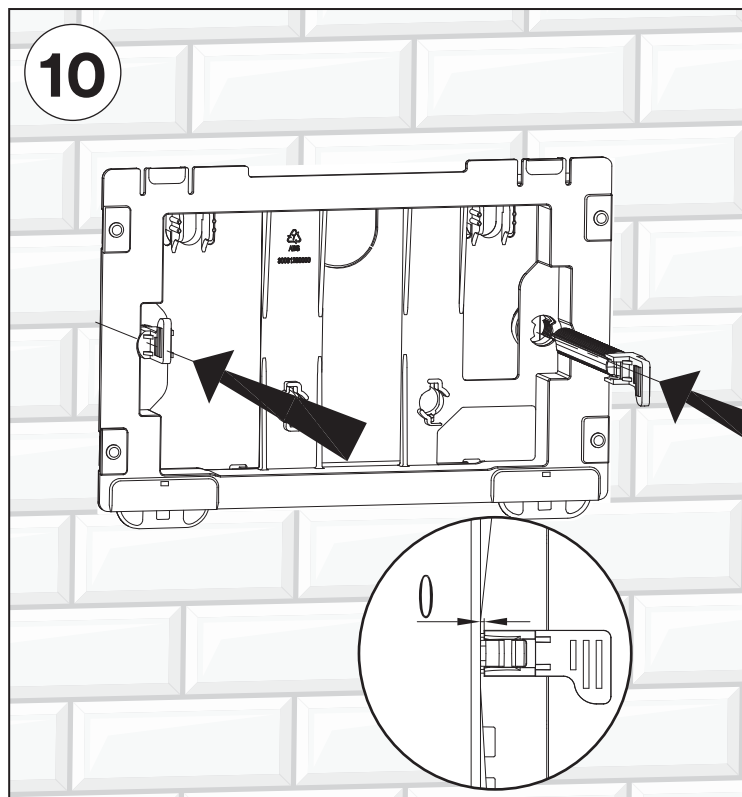
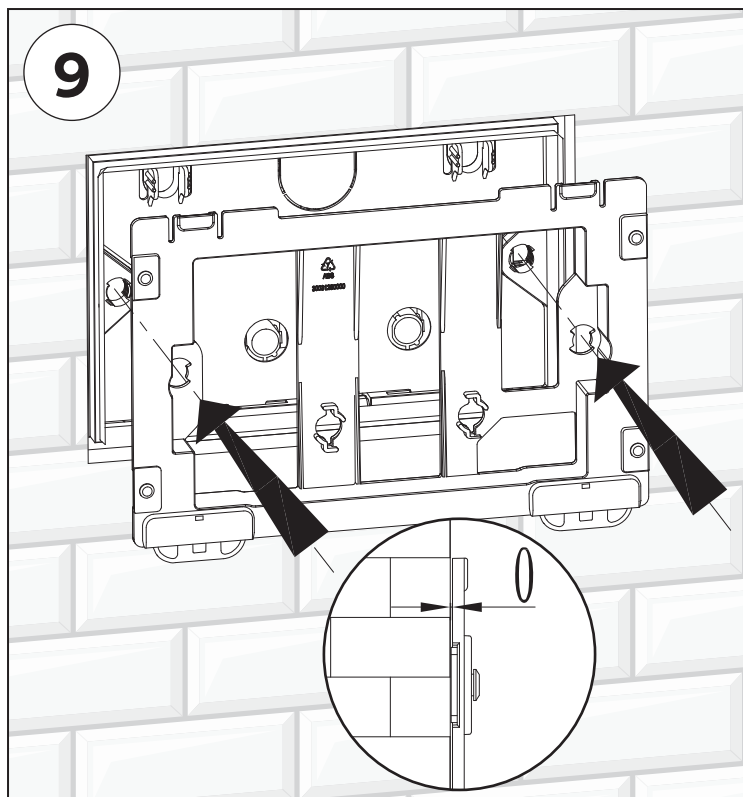
! READ ALL INSTRUCTIONS BEFORE UNPACKING THE PRODUCT

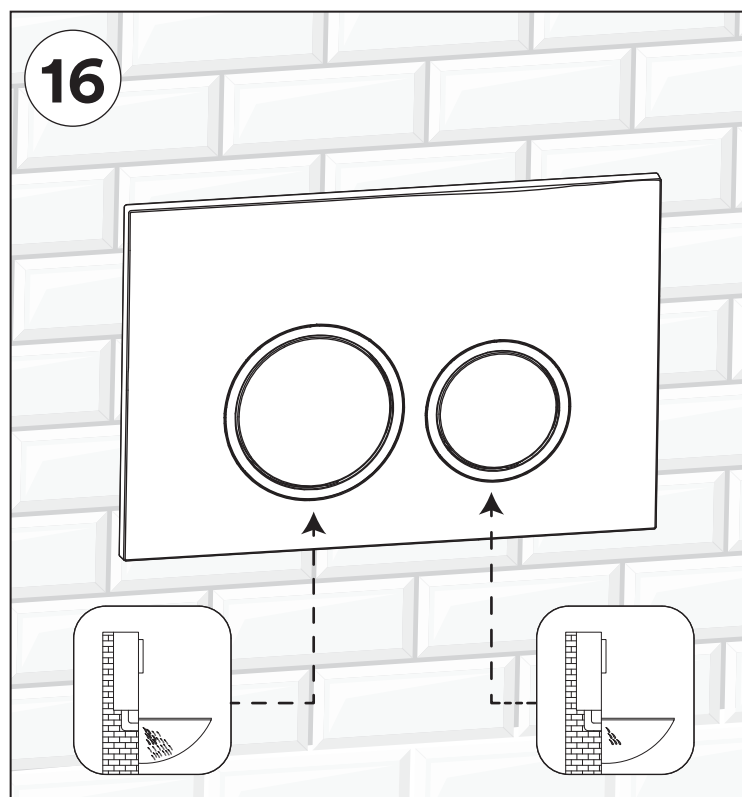
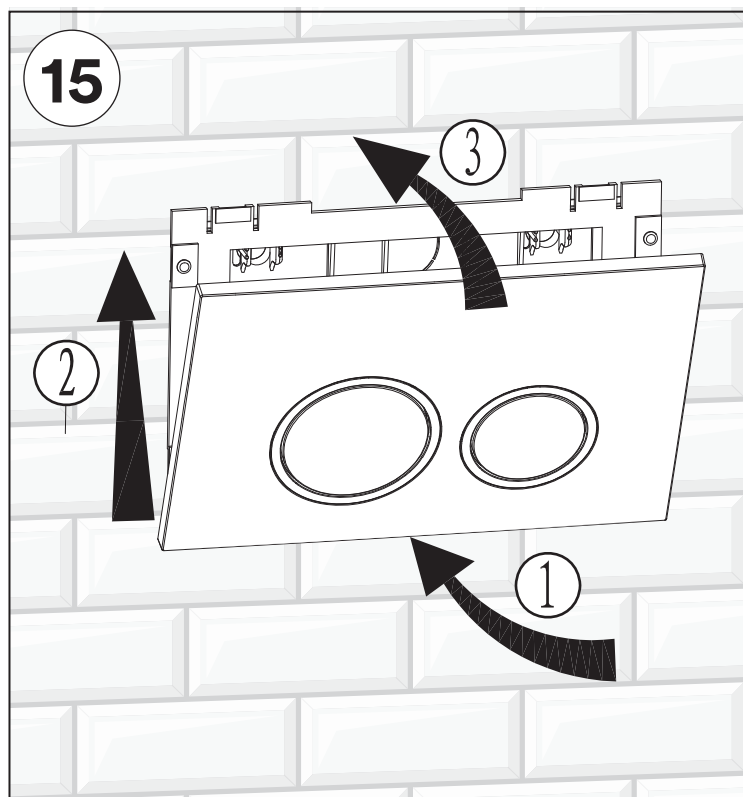
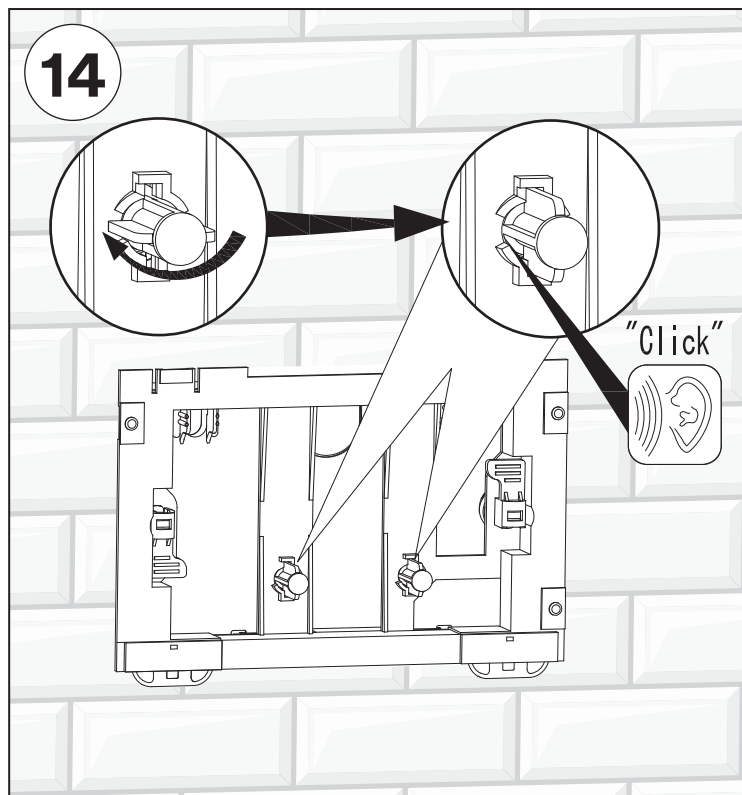
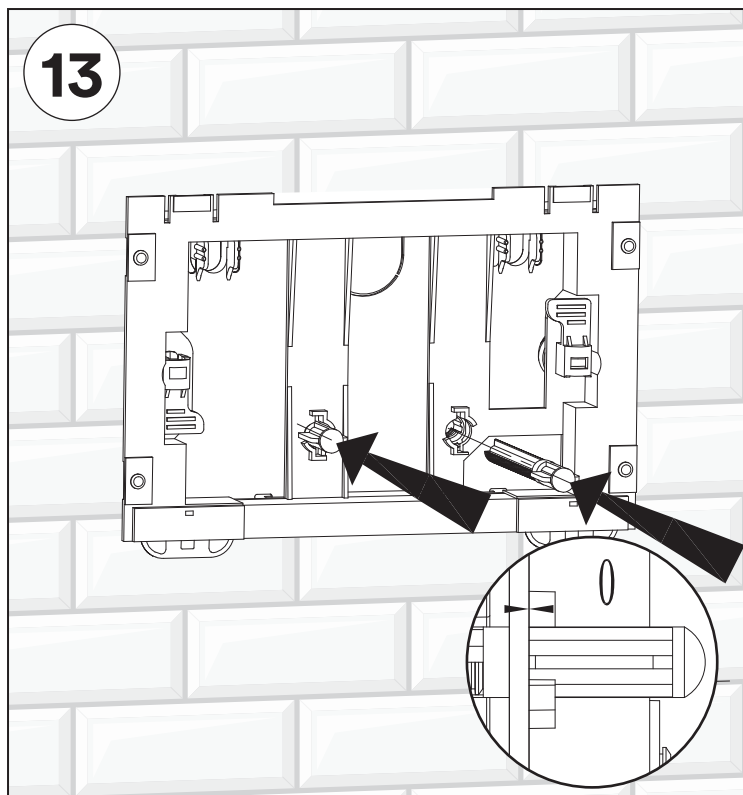


We reserves the right to change, update, modify, alter, redesign this manual/product or its policies without prior notice!
It is your responsibility to visit website to download or contact customer service for the most updated version of the installation instructions.

We shall not be liable for any injuries or property damages in connection with this product during installation or use of this product!



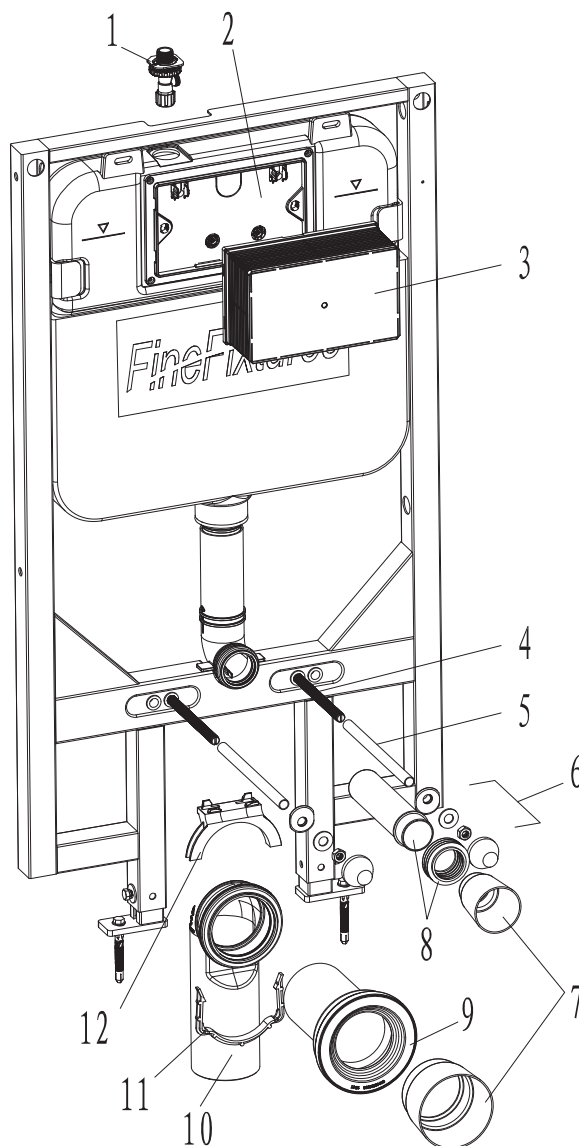




Retain these installation instructions for future reference!

Thank you for using Fine Fixtures!

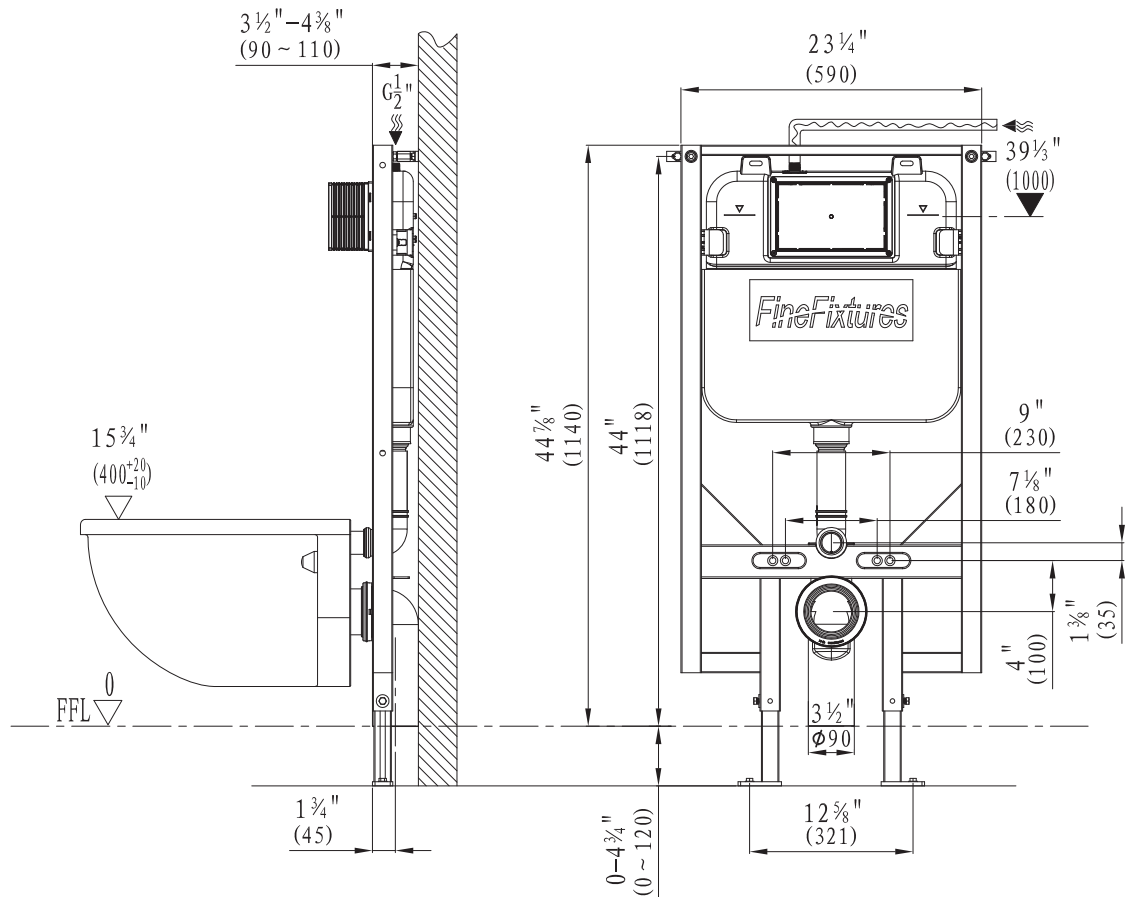
Concealed Tank - Model: CT04 Installation Manual



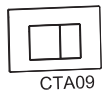
List of main installation accessories

NO.	Description	Qty	Function
1	Angle valve	1	Fill valve inlet and shut-off
2	Cistern cover	1	Airproof tank and mounting of locking bracket
3	Plastic holder	1	To reserve space for installation of actuator at wall building To prevent dust and impurities into tank at wall building
4	Connecting screw	2	To mount ceramic bowl
5	Protective cover	2	To protect connecting screw at wall building
6	Ceramic bowl fixing accessories	2	To mount ceramic bowl
7	Piping stopper	2	To reserve space for straight tube and connecting pipe
8	Straight tube	1	To joint cistern into ceramic bowl
9	Connecting pipe	1	(cutting in accordance with wall thickness)
10	Discharge pipe	1	To discharge liquid and solid waste from ceramic bowl .
11	Mounting bracket	1	To mount draining syphon
12	Discharge pipe holder	1	

Installation dimension



Options



CTA09 Dual flush actuator; white, black or chrome finish



CTA11 Dual flush actuator; white, black or chrome finish



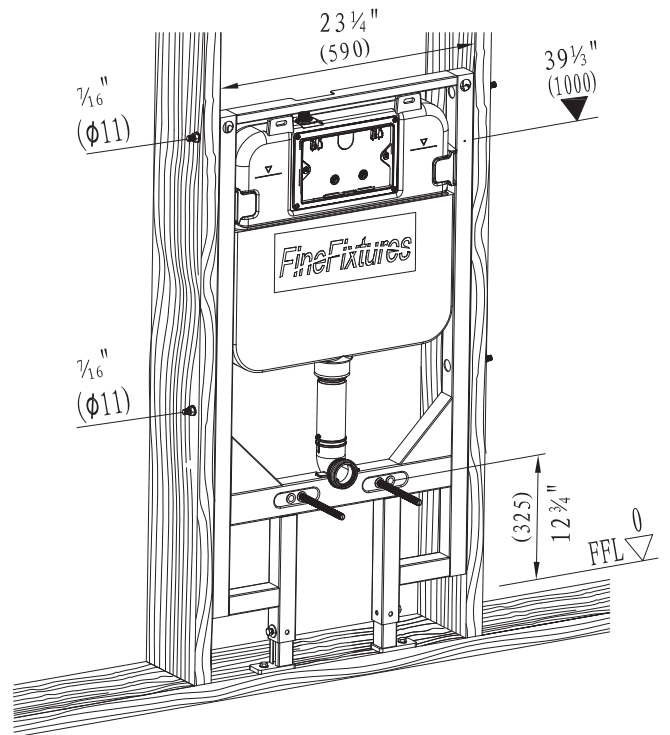
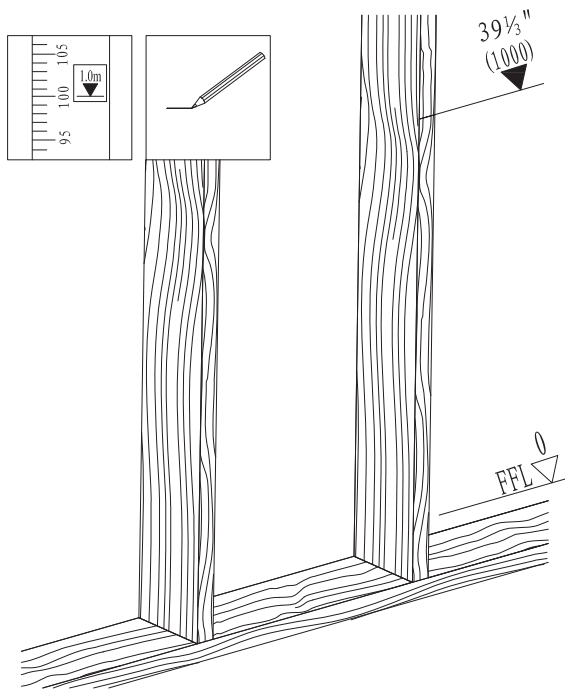
CTA12 Dual flush actuator; white, black or chrome finish

Installation of concealed cistern

A

2

1

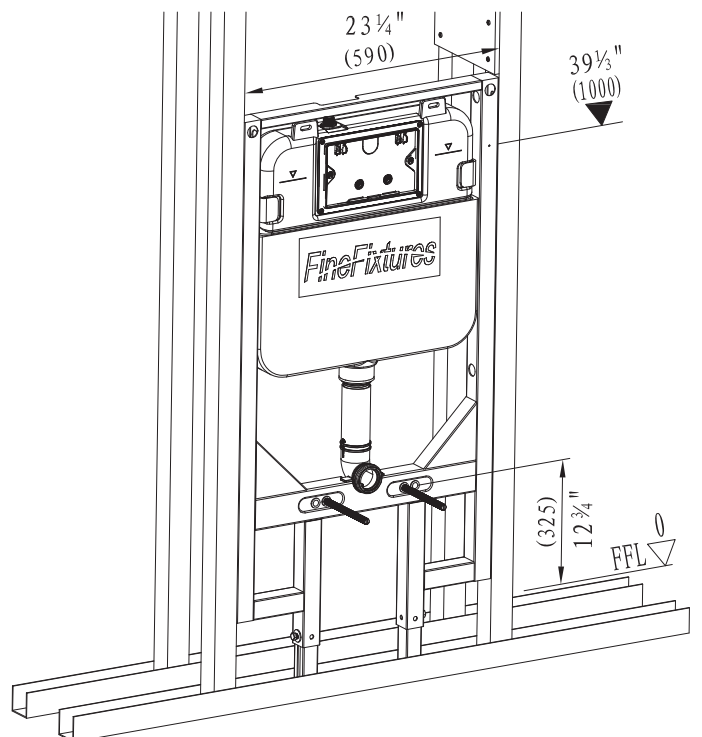
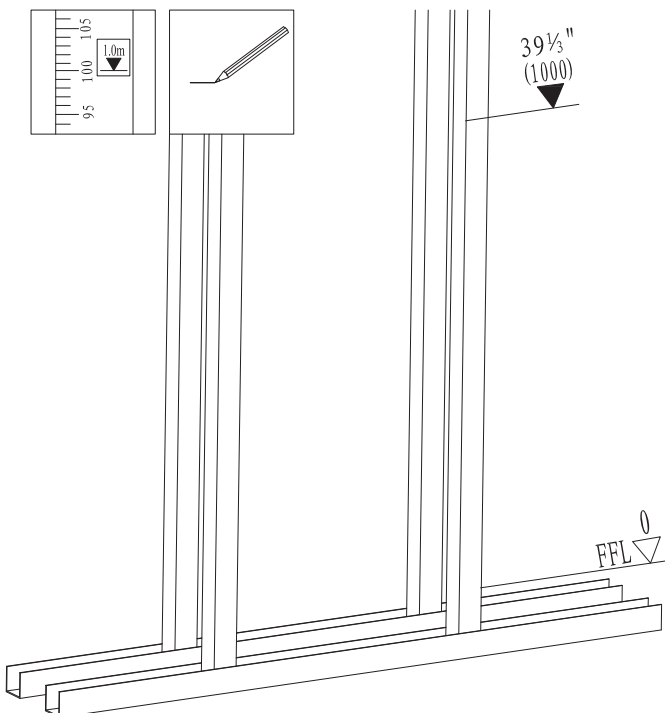


Installation of concealed cistern

B

2

1

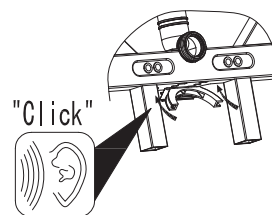
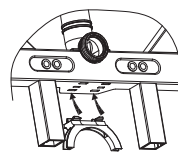
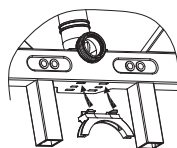
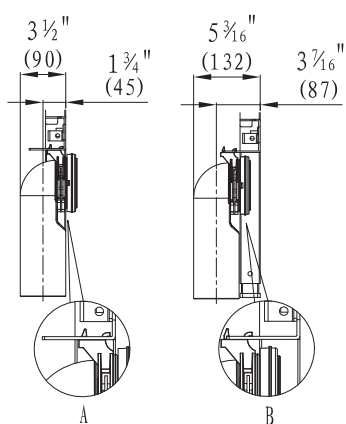


Installation of draining syphon

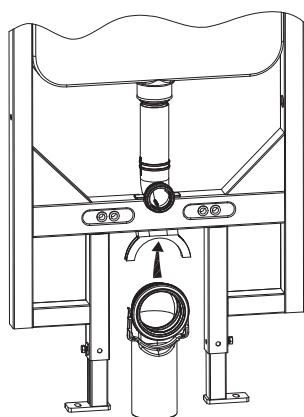
2

3

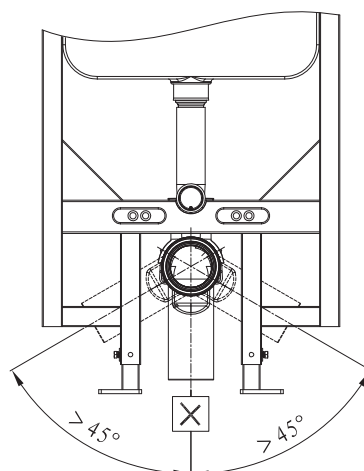
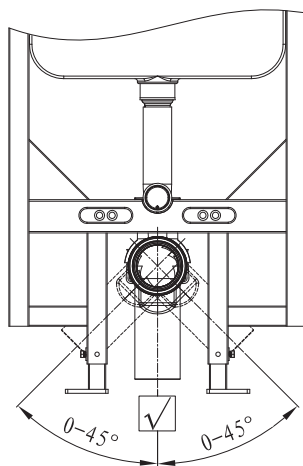
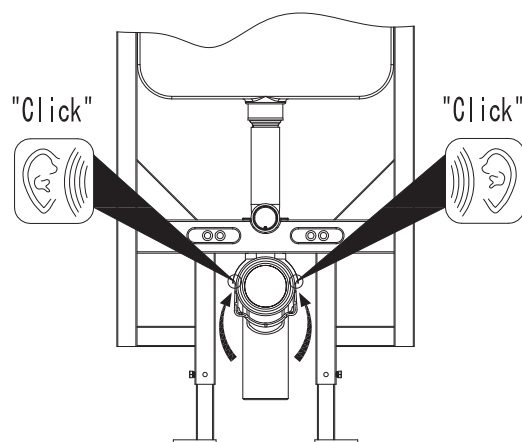
1



4



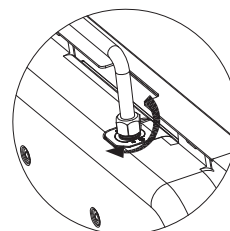
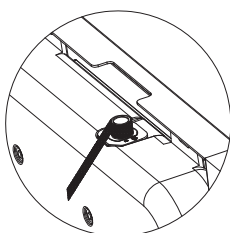
5



Installation of water supply

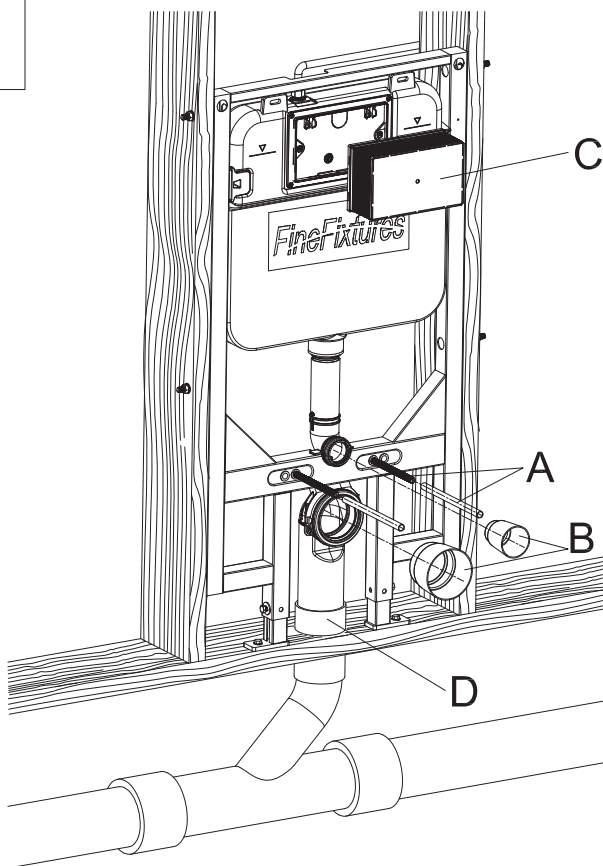
2

1



Mounting of installation accessories

A

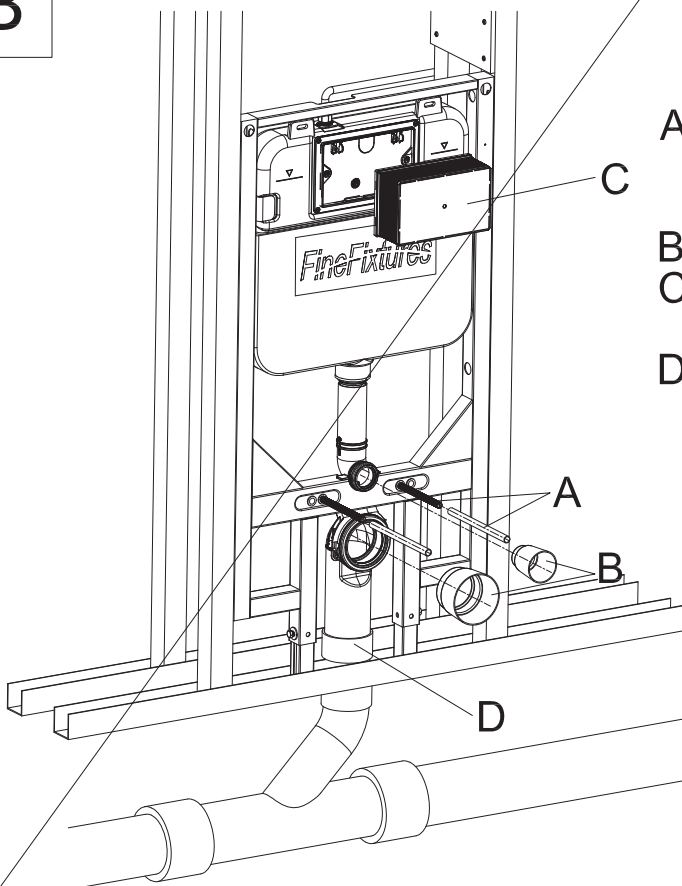


A Install M12 rods with plastic sleeves, on the inner holes. The rods should be installed at 7" apart.

B Install pipe plugs and
C mud guard during the rough-in installation

D Complete waste elbow connection with 3" DWV shielded coupling(D-provided) to waste pipe.

B

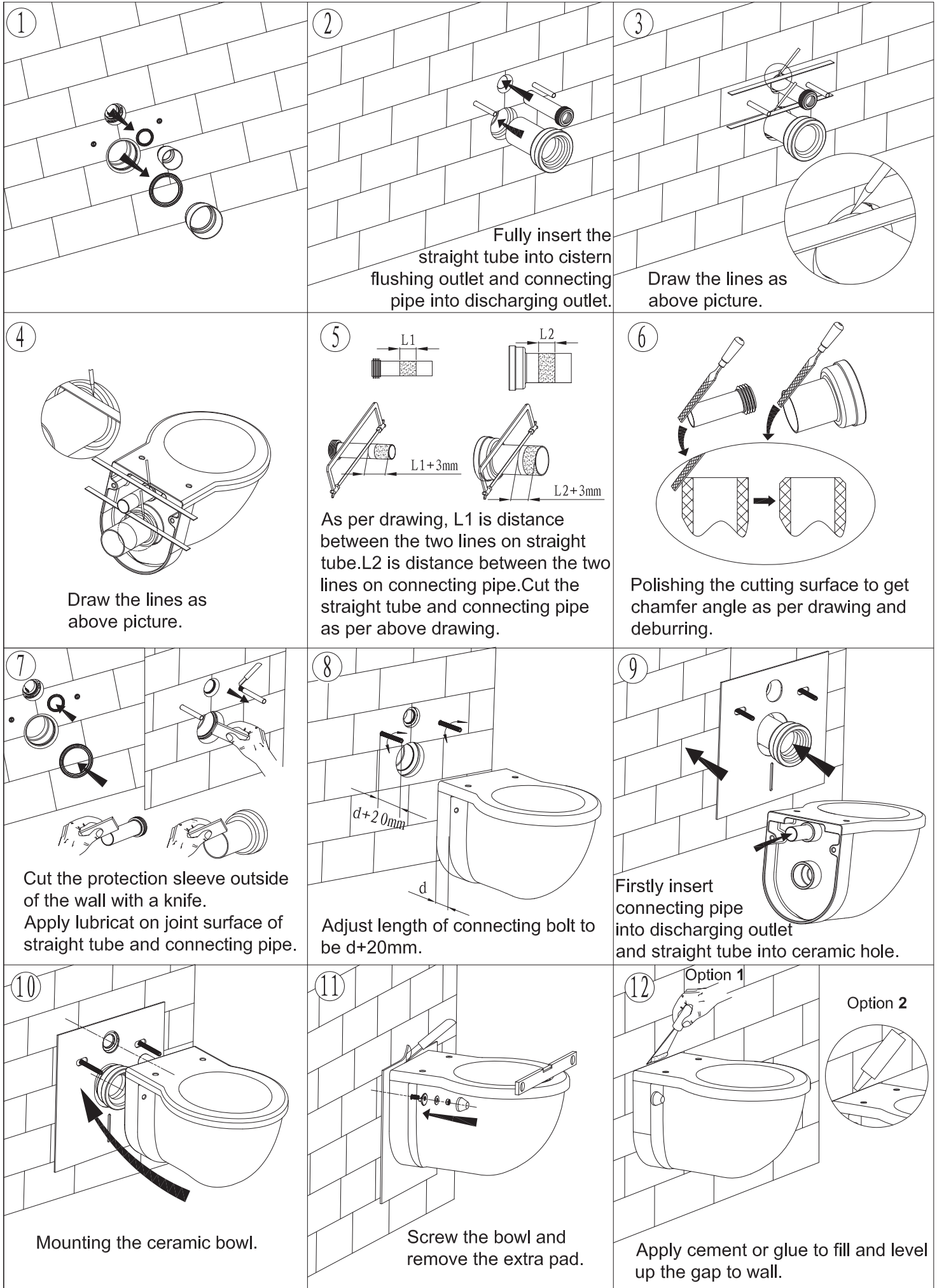


A Install M12 rods with plastic sleeves, on the inner holes. The rods should be installed at 7" apart.

B Install pipe plugs and
C mud guard during the rough-in installation

D Complete waste elbow connection with 3" DWV shielded coupling(D-provided) to waste pipe.

Mounting of ceramic bowl

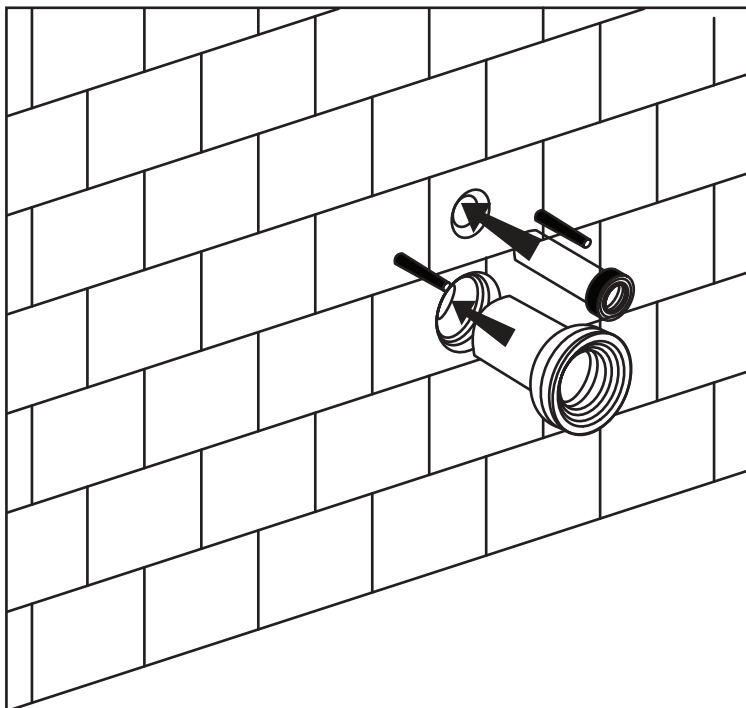


Installation Instructions

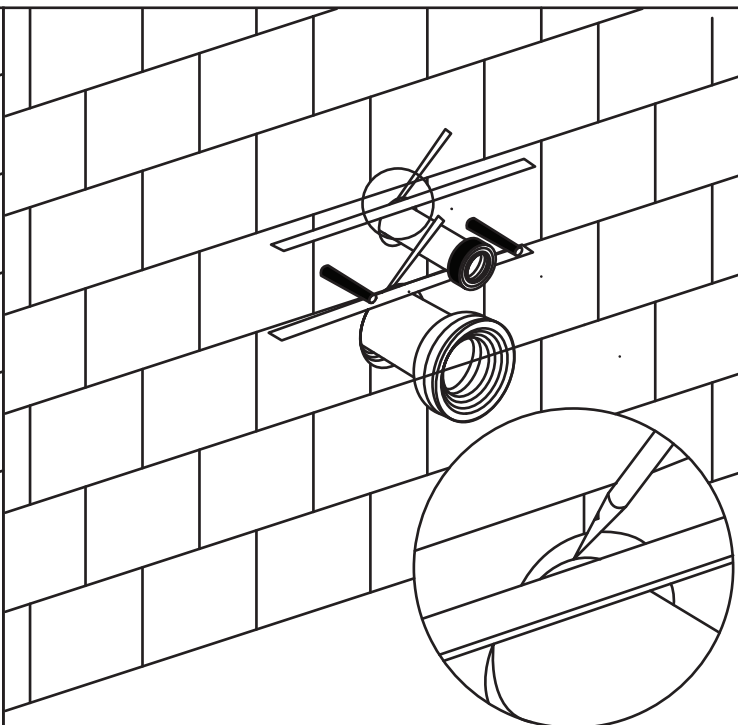
#WT20RM



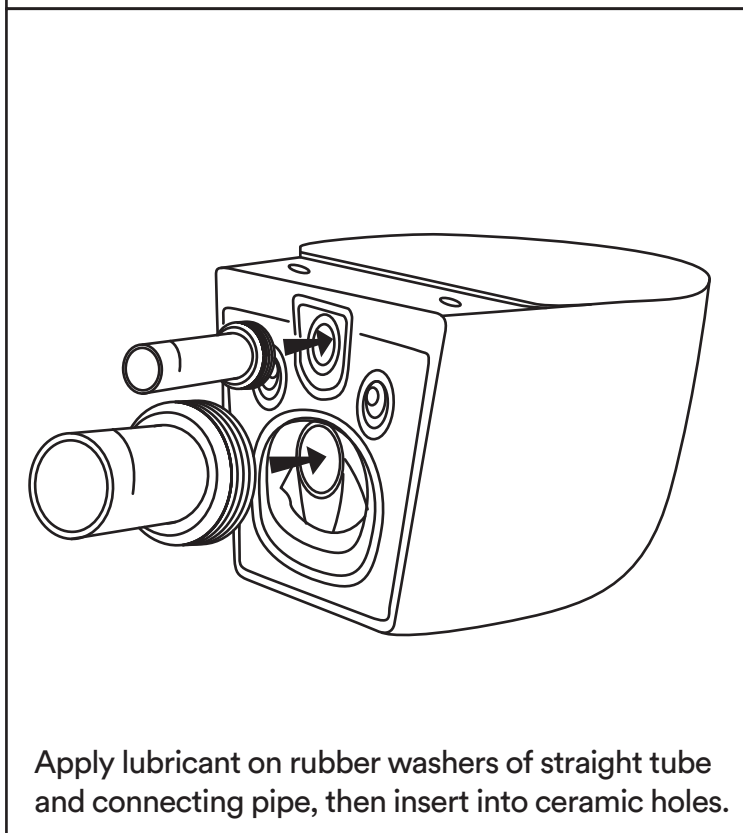
Nebula™
CONCEALED TANKS NEBULA™ COLLECTION



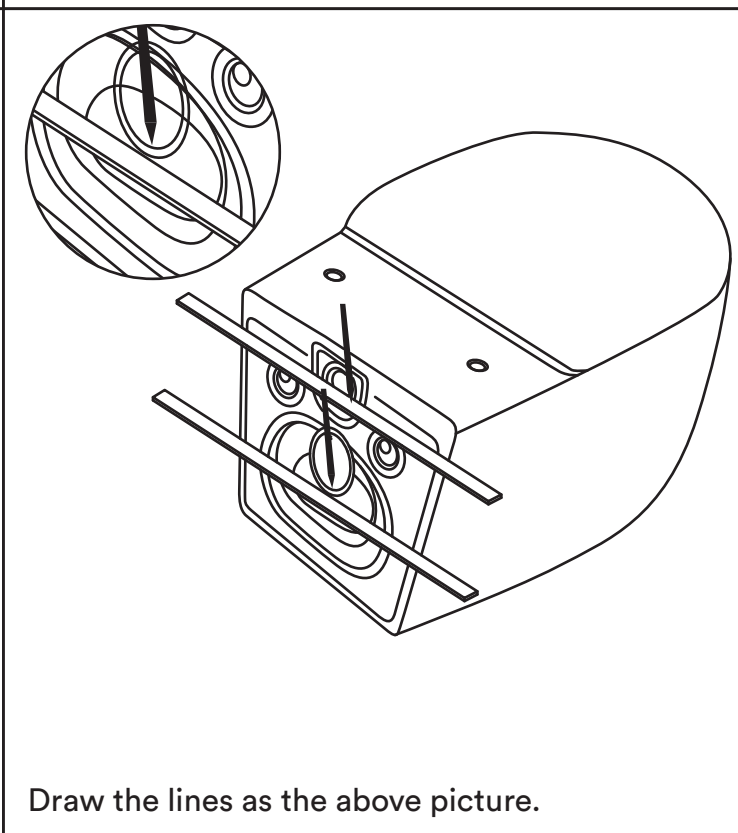
Fully insert the straight tube into cistern flushing outlet and connecting pipe into discharging outlet.



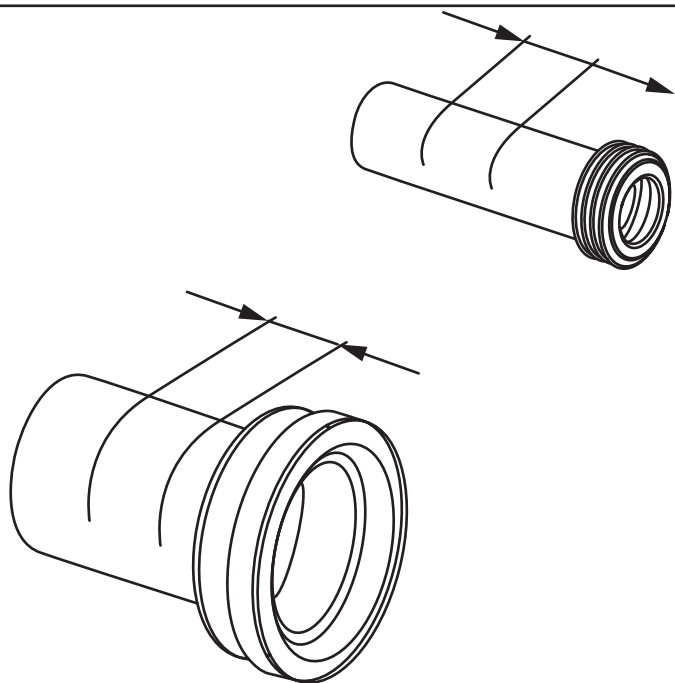
Draw the lines as the above picture.



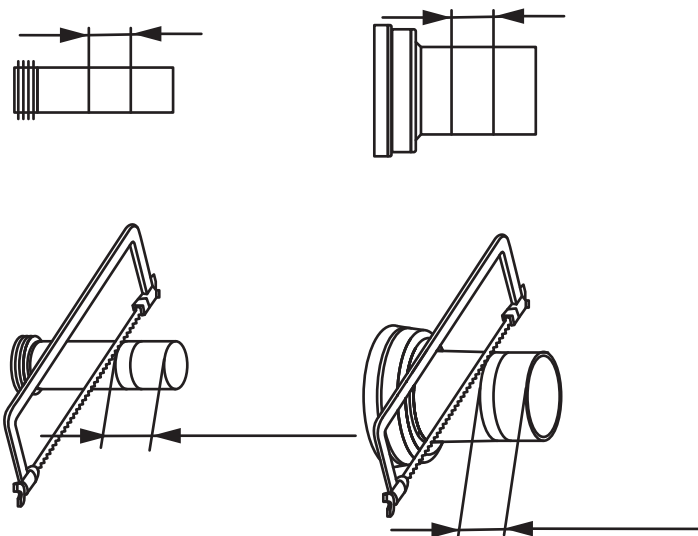
Apply lubricant on rubber washers of straight tube and connecting pipe, then insert into ceramic holes.



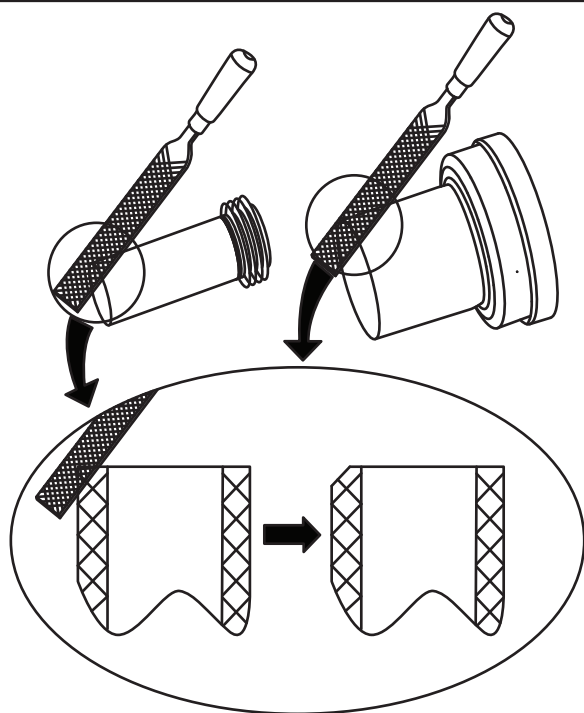
Draw the lines as the above picture.



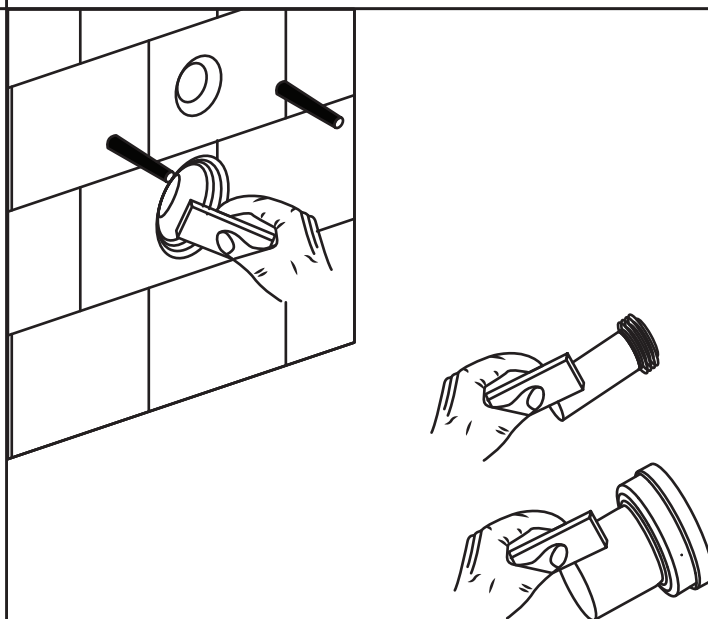
As per drawing, - L1 is distance between the two lines on straight tube. - L2 is distance between the two lines on connecting pipe.



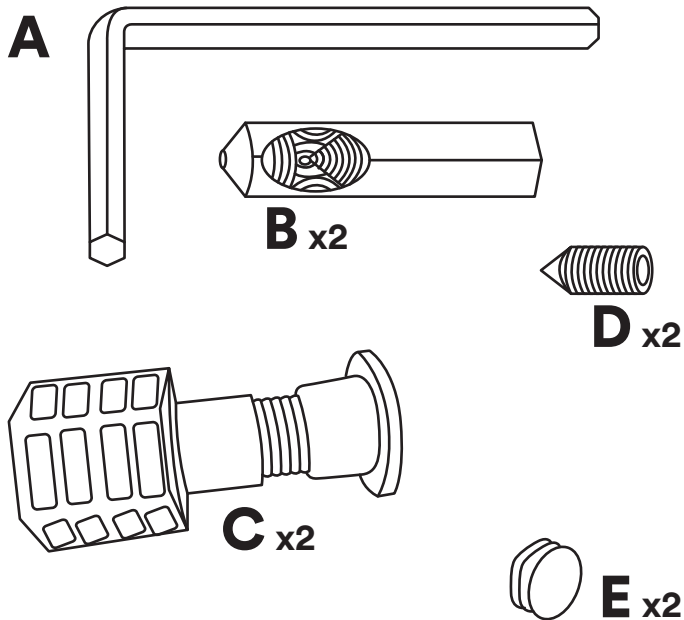
Cut the straight tube and connect the pipe as per above drawing.



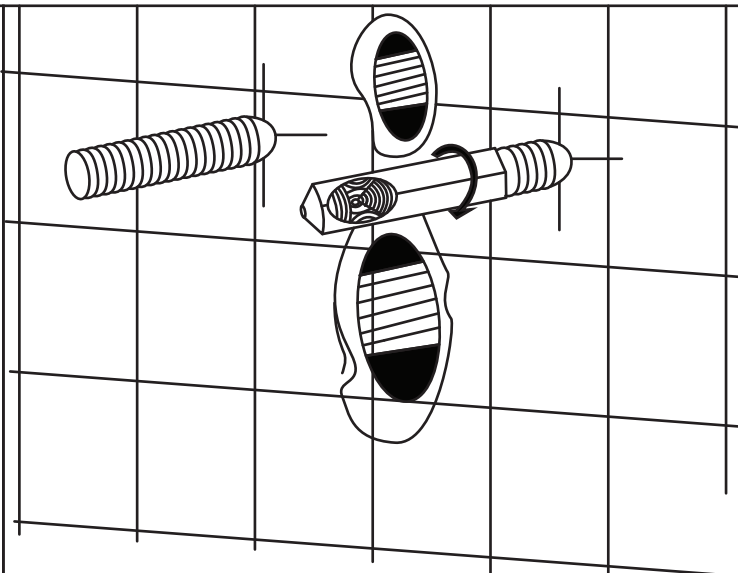
Polish the cutting surface to get chamfer angle as per drawing and deburring.



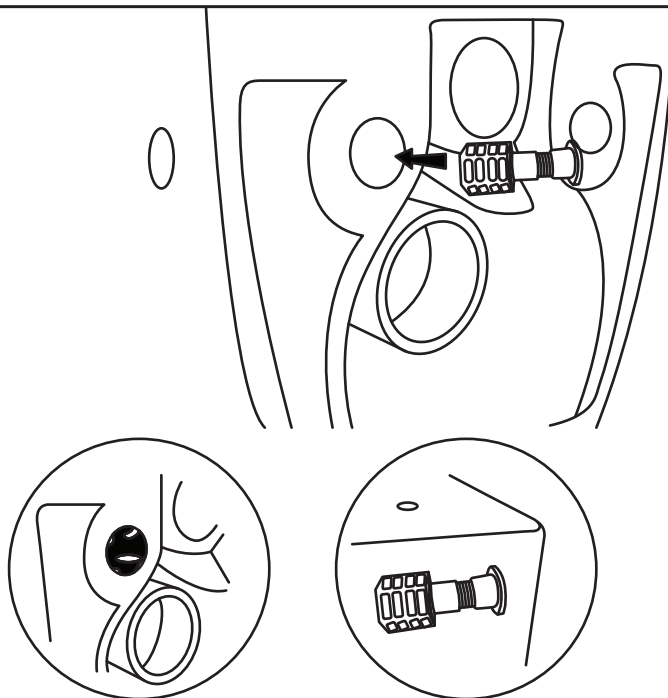
Apply lubricant on joint surface of straight tube and connect the pipe.



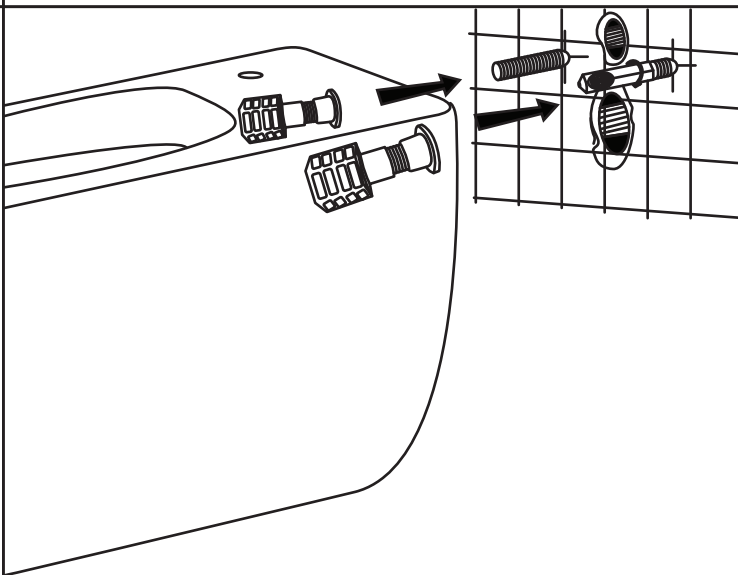
Five accessories:
Part A. - Part B. - Part C. - Part D. - Part E.



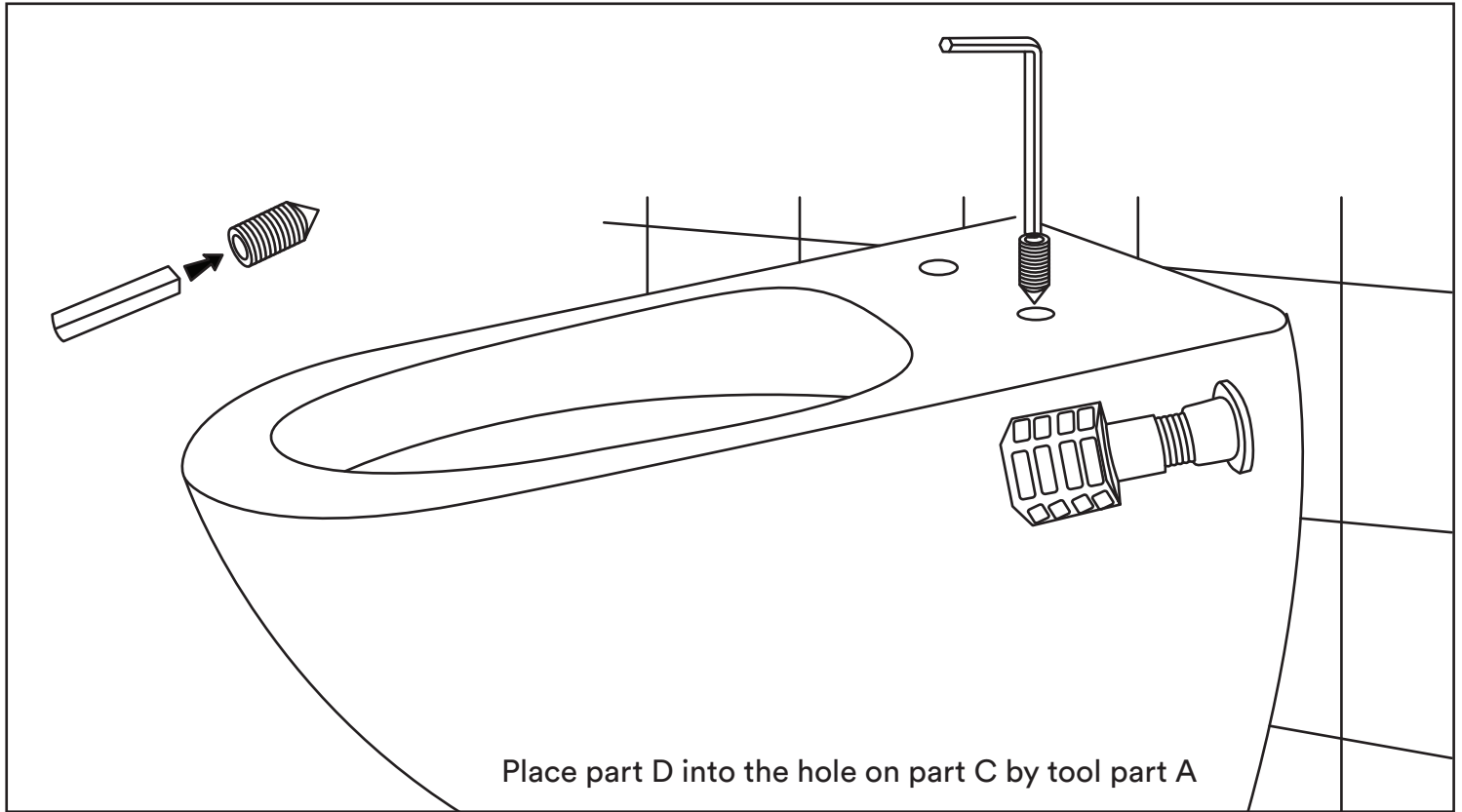
Place part B into the screw as the above picture.



Place part C into the installing hole on the pan.



Insert Part C into Part B.



Retain these installation instructions for future reference!

Thank you for using Fine Fixtures!