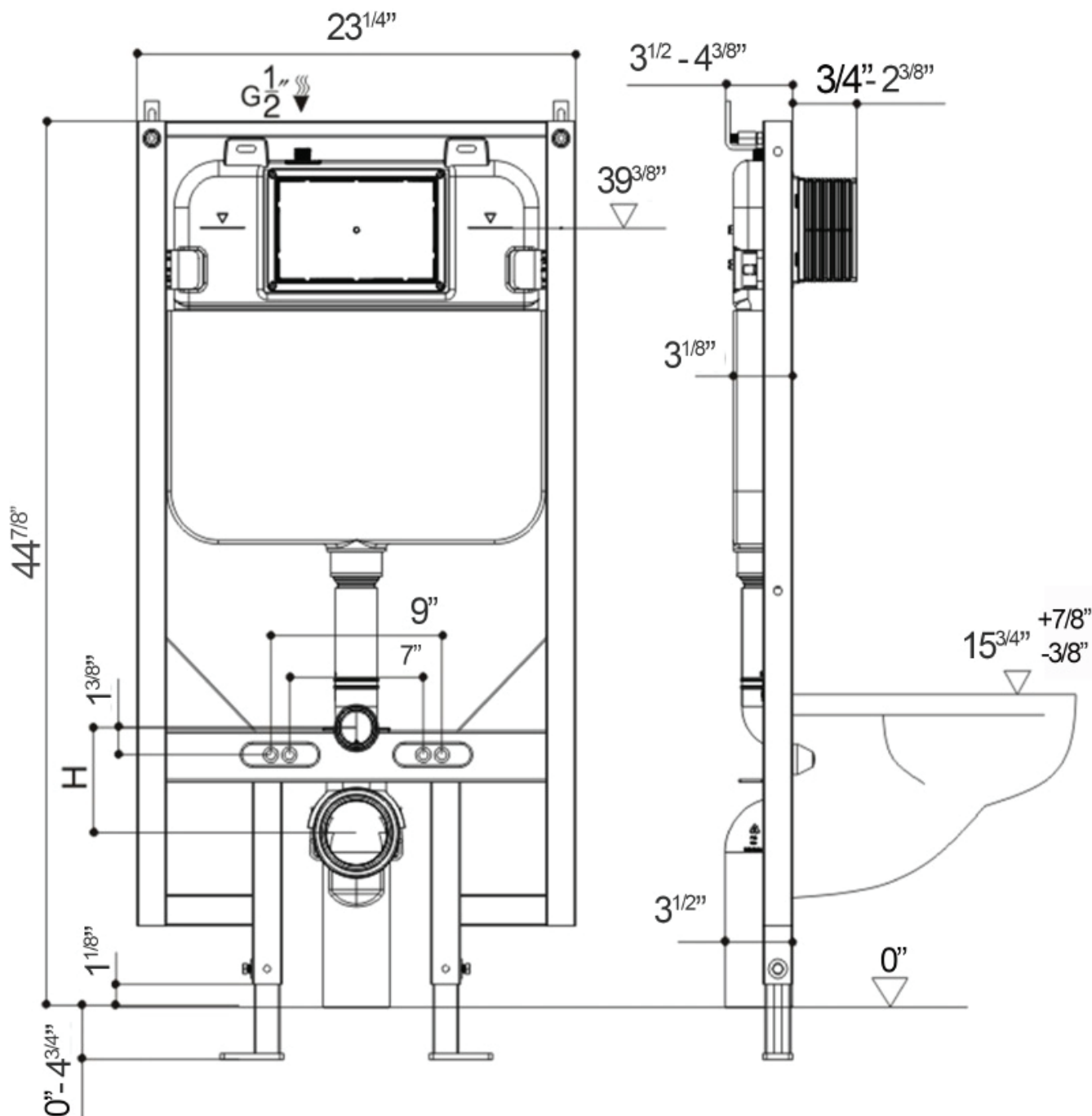
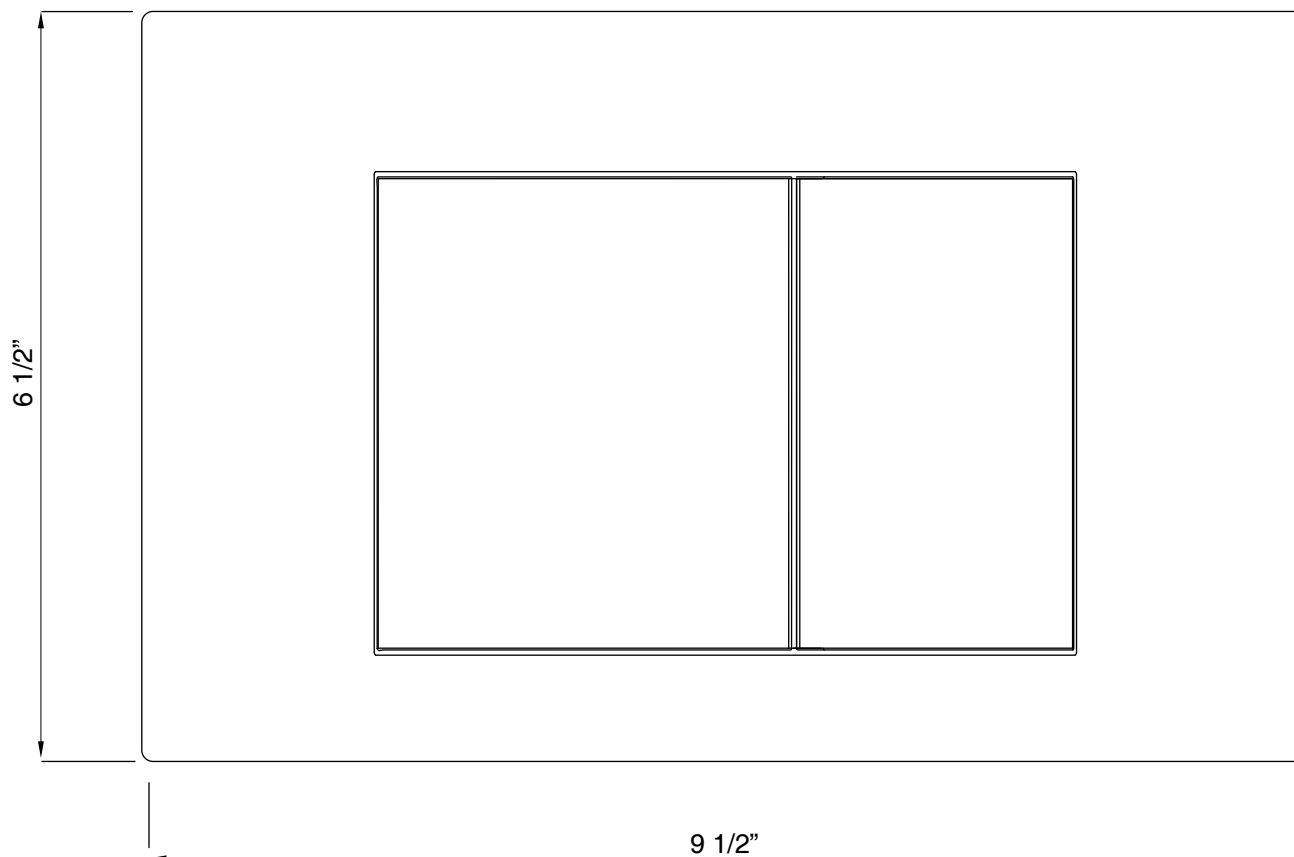


## DIMENSIONS/TECHNICAL DATA



**ATTENTION!** Dimensions may vary by up to  $\frac{3}{8}"$ . It is highly recommended to pull all dimensions of actual model for installation and measuring purposes.

## TECHNICAL DATA



## FOR A BATH THAT'S FLUSH WITH STYLE

Immerse yourself in clean, green luxury with Fine Fixtures' ultramodern wall-hung toilets in the new Nebula™ collection. Our vision of efficiency and space-saving style, each model mounts to the wall with hidden plumbing for a sleek, compact appearance. For the perfect pairing, you can also select our powerful Vortex™ double-swish toilet bowl technology that delivers deeper sanitation while conserving water, reducing clogging, and polishing bowls to a pristine clean. Add soft-close seats and self-clean glazing, and your bath becomes home's centerpiece.

## UNDERSTANDING OUR VORTEX™ DOUBLE-SWISH

Fine fixtures' pioneering Vortex™ technology promises maximum performance while maintaining modernist efficiency. Rimless bowls feature powerful washdown jets that direct water in a consistent cyclonic stream. The result is double the clean with every single flush.



## REVOLUTIONARY DESIGN

Wall-hung toilet units feature powerful Vortex™ technology built right into the bowl.



## CONTEMPORARY PROFILE

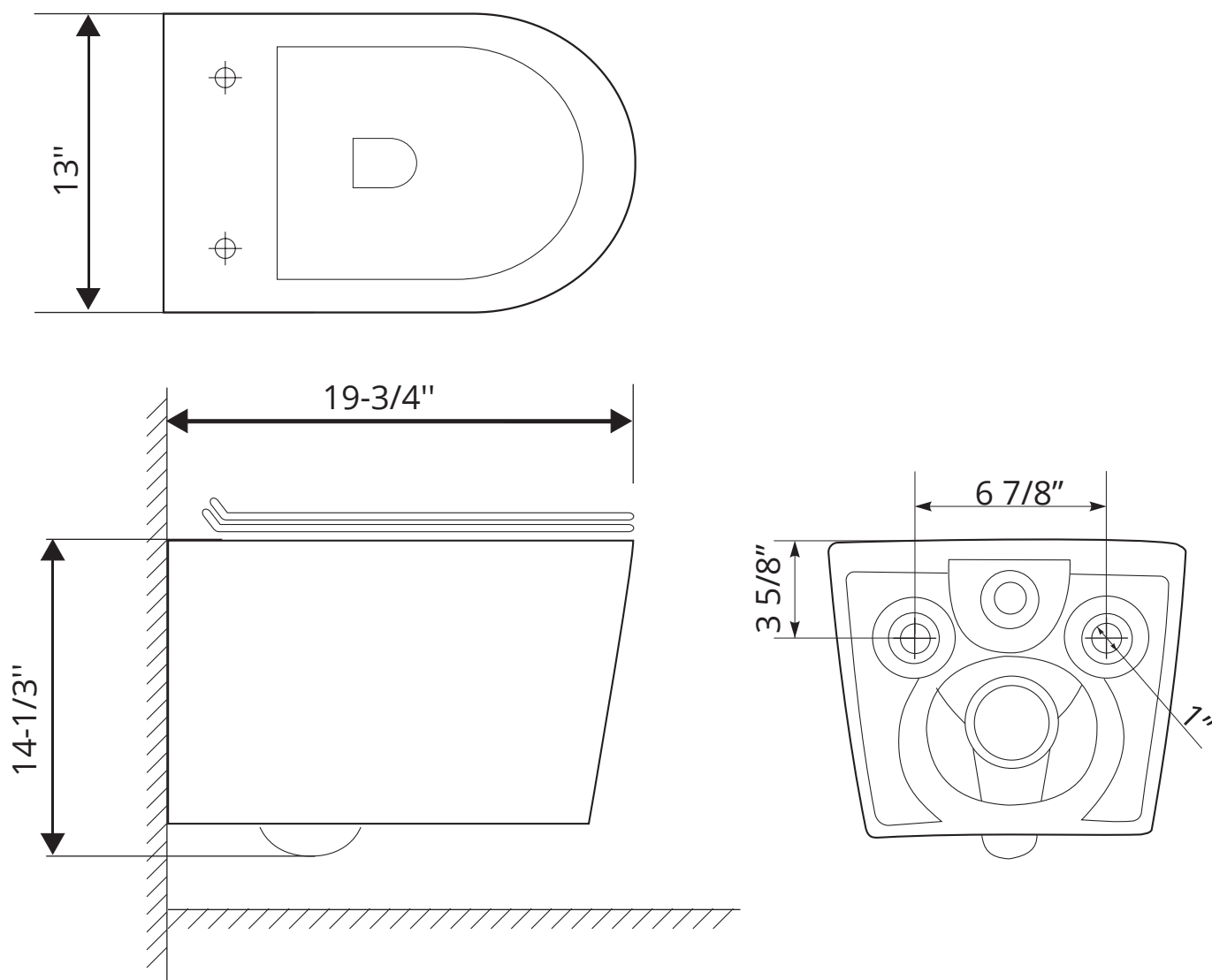
Hidden Nebula™ tanks feature seamless mounting for a minimalistic beauty.



## CHIC AFFORDABILITY

Clean, green, eco-friendly performance now comes at an attractive price.

## DIMENSIONS/TECHNICAL DATA



**ATTENTION!** Dimensions may vary by up to 3/8". It is highly recommended to pull all dimensions of actual model for installation and measuring purposes.

## TECHNICAL DATA