



TREEKEEPER
WWW.TREEKEEPERBAGS.COM

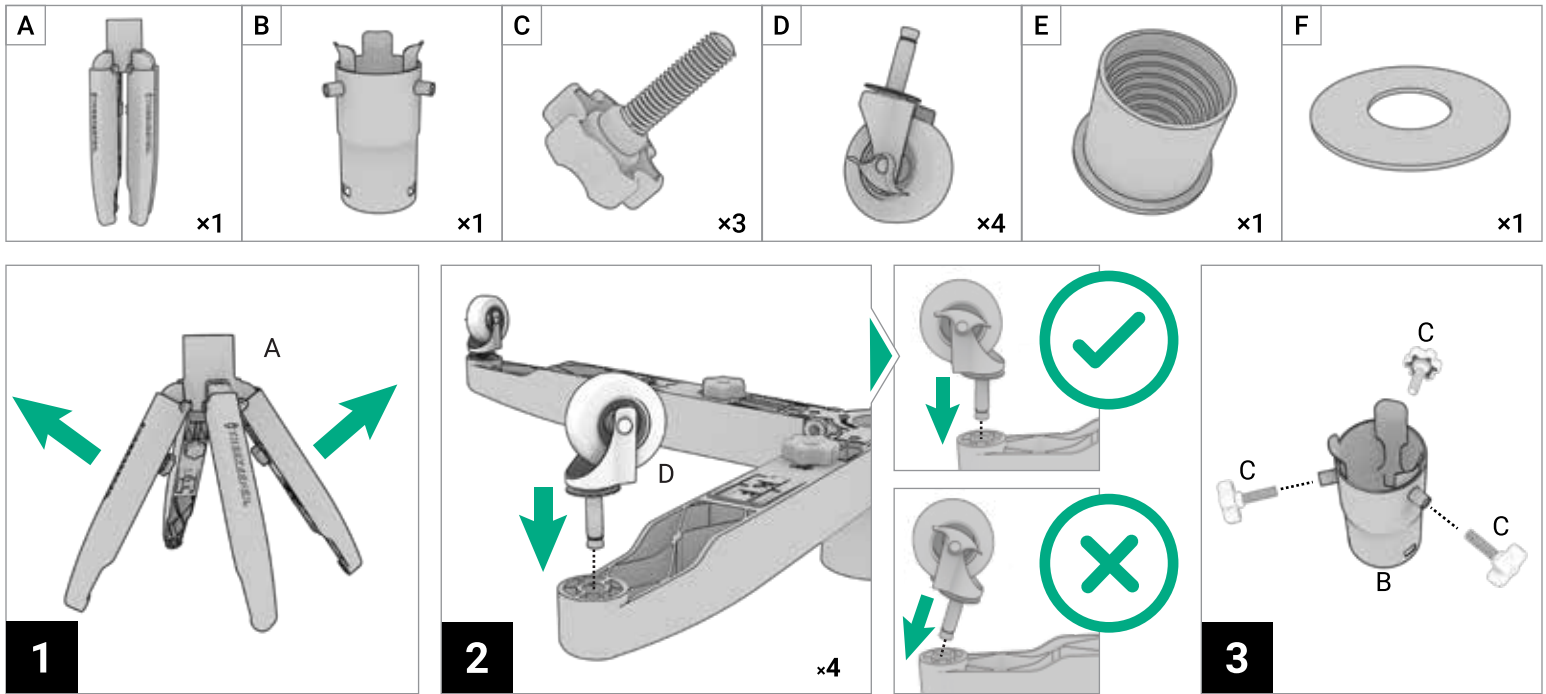
UPRIGHT TREE STORAGE BAG WITH ROLLING STAND

MODEL #: TK-10106 | PATENT NO. US 7,694,494 B2

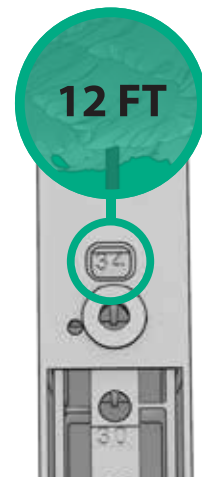
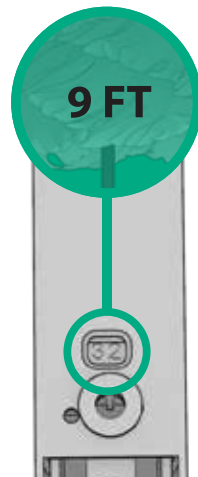
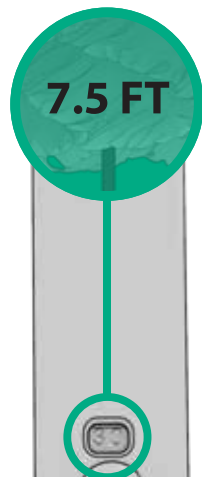
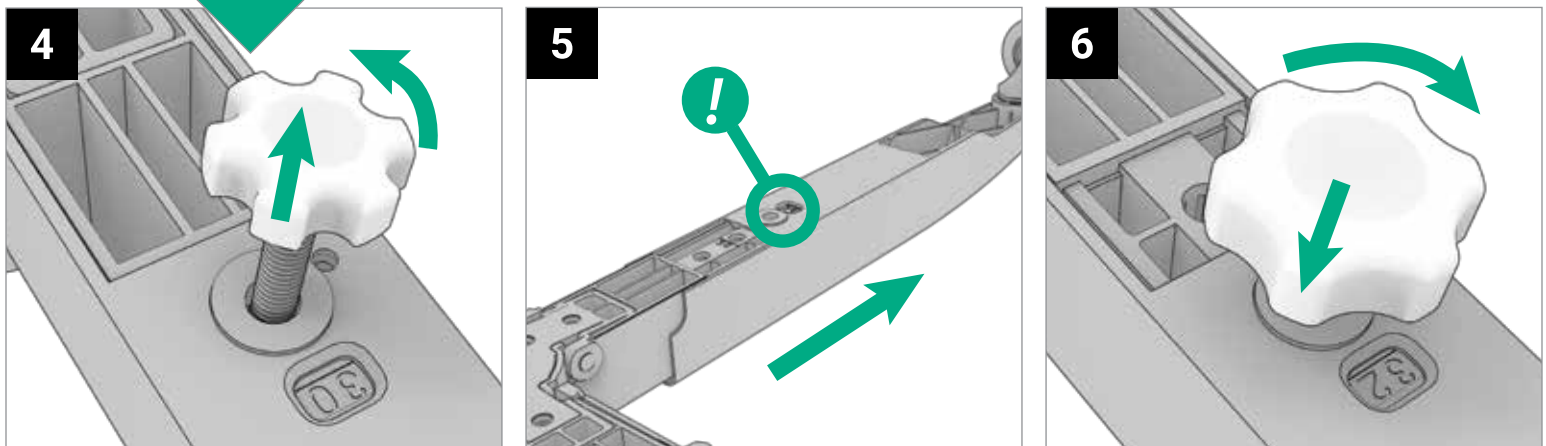
V06279



FOR ASSISTANCE WITH ASSEMBLY, INSTALLATION, PARTS & CUSTOMER SERVICE: WWW.TREEKEEPERBAGS.COM | SUPPORT@TREEKEEPERBAGS.COM

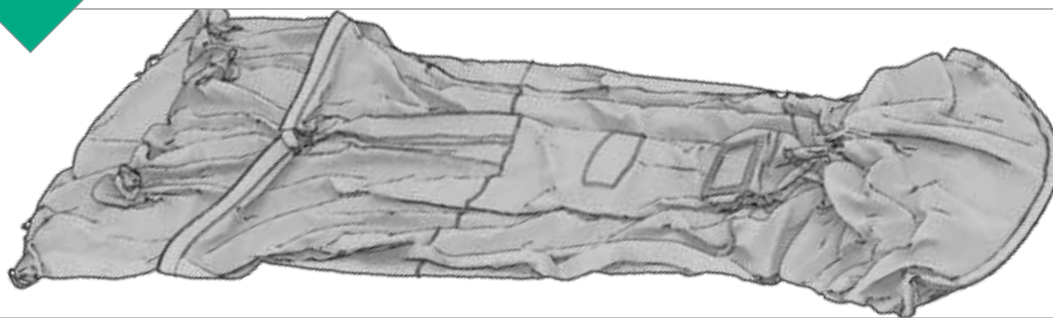


Adjust the stand legs for the height of your tree.



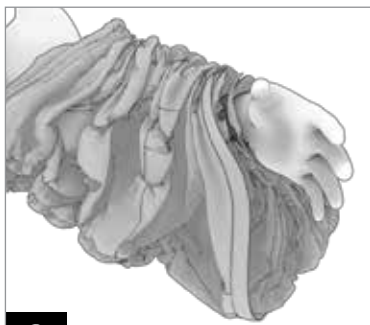
Attach the bag to the rolling stand.

1



Lay the bag flat on the ground.

2



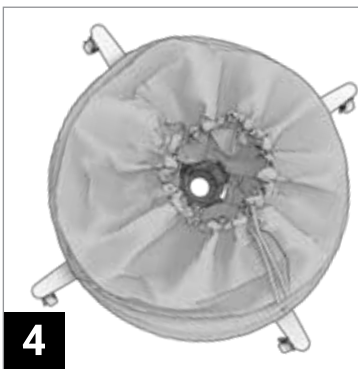
Push your arm into the top of the bag and extend completely through until the bag is fully draped on your arm.

3



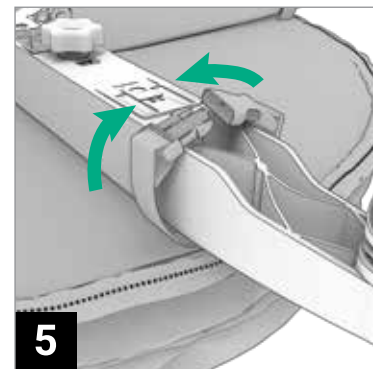
Slide the bag off your arm, keeping the hole in the center open. Locate the bottom-outer skirt and tuck the bag into it.

4



Place the center hole around tree stand center post, and lay the bag onto the stand.

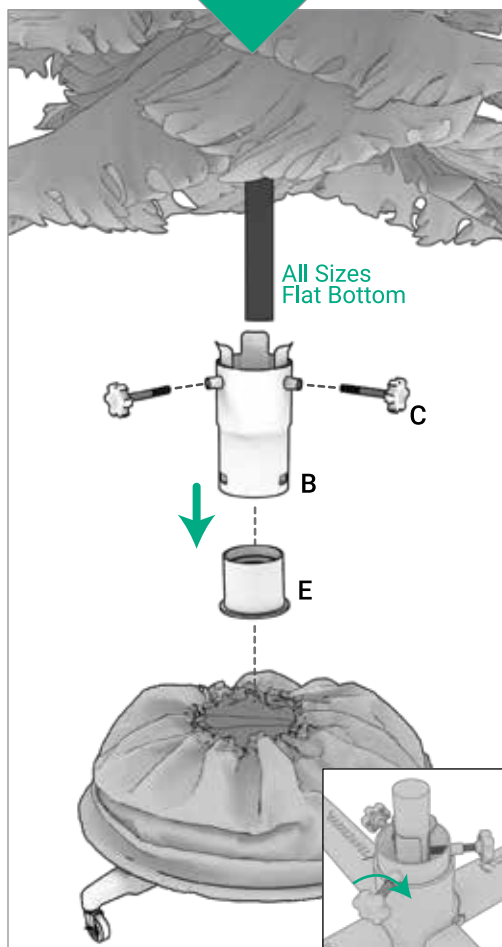
5



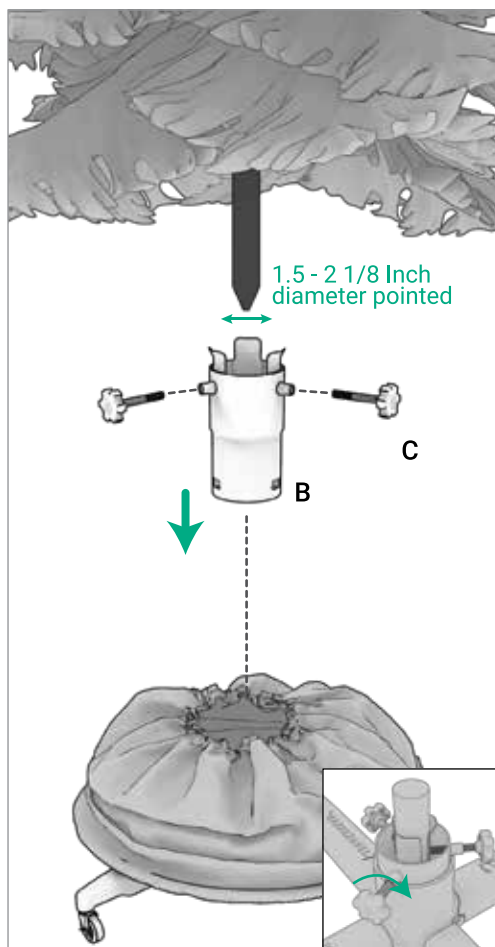
Flip over the bag and stand, and attach the bag to the stand with straps and buckles.

Determine your tree pole shape, complete stand assembly, and install your tree.

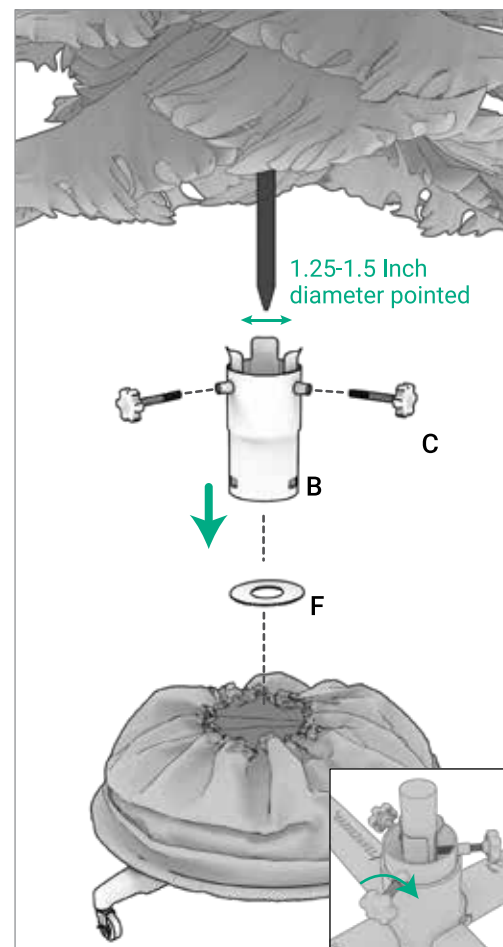
All Sizes
Flat Bottom



1.5 - 2 1/8 Inch
diameter pointed

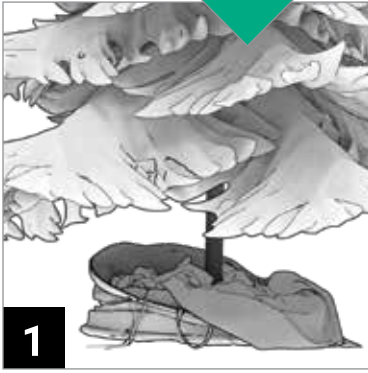


1.25-1.5 Inch
diameter pointed



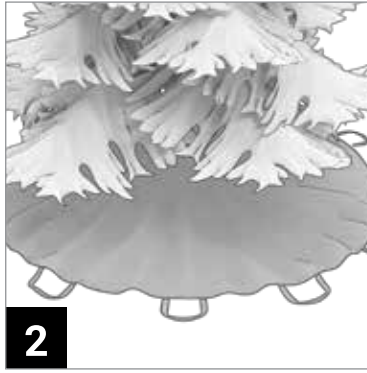
Storing your tree After Christmas

Do not disassemble your tree. Remove all decor and pull the bag up and over your tree AFTER the holidays.



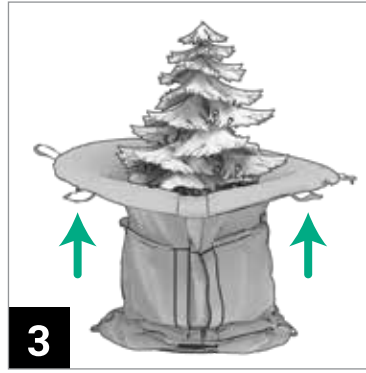
1

Remove all ornaments and loosen the drawstring. Pull the storage bag out of the tree skirt.



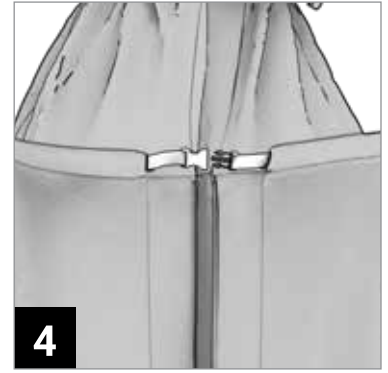
2

Unfasten all buckles and zippers and fully open and expand the tree bag skirt.



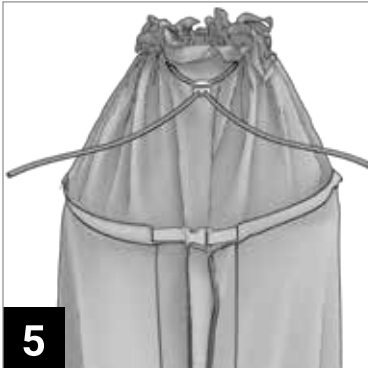
3

Using two people, carefully pull up the bag while compressing the tree branches upward. Ensure the bag is not twisted at the bottom as you pull up.



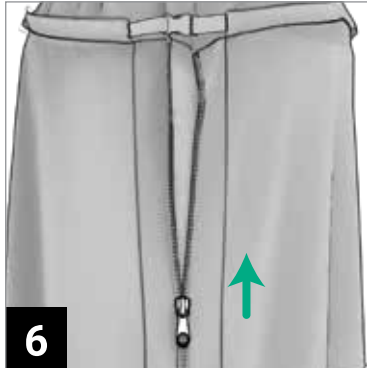
4

At the top of the bag, fasten the two belt buckles on each side of the top ring.



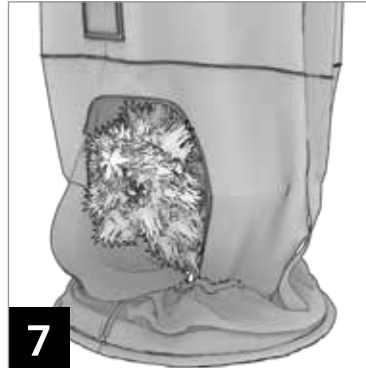
5

Once buckled, gather the bag at the top and close it by pull the drawstring tight.



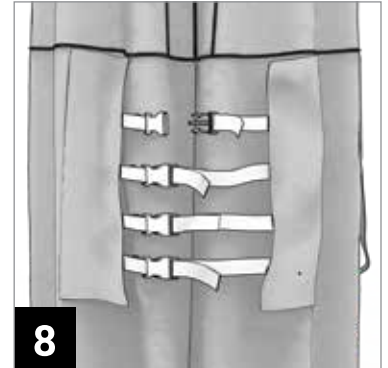
6

Working from the bottom up, carefully zip-up the bag while compressing the tree.



7

You may need to remove the top tree section and place it into the bottom storage area.



8

Buckle and tighten the back straps to fully compress your tree before storage.

Taking the Bag Down

Christmas is back and it's time to get out the tree! Please follow these instructions to return your bag to its tree skirt position



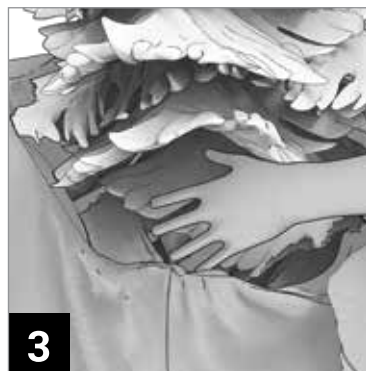
1

Release all drawstrings, buckles, zippers and open the top skirt.



2

Begin to pull the bag down until you meet resistance.



3

Gently push on the branches until the bag drops freely.



4

Stuff the bag back into its base skirt position under your tree.

2019 All Rights Reserved © Property of TreeKeeper LLC | Intended for indoor use

CAUTION



DO NOT lean the bag on it's side and pull all the weight of the tree on one or two legs. Doing so could cause damage your tree stand, tree, or yourself. **ALWAYS** use caution when leaning the tree over. **DO NOT** put too much pressure on the stand while tipped as this could result in damaging the trunk of the tree. Use **CAUTION** when lifting the tree as it may be heavy. Use **EXTREME CAUTION** when moving the tree up or down stairs. Whenever possible, **USE TWO OR THREE PEOPLE TO STORE YOUR TREE.**