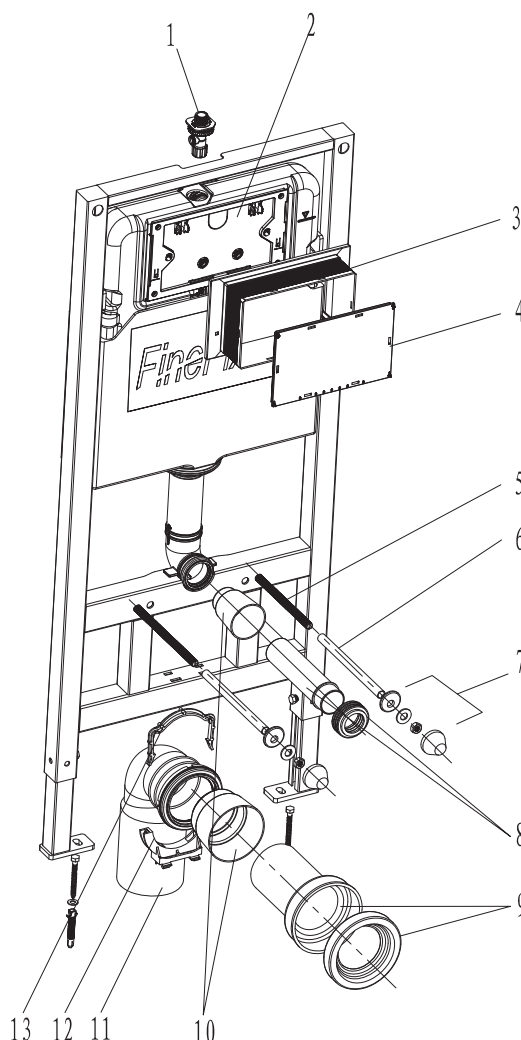


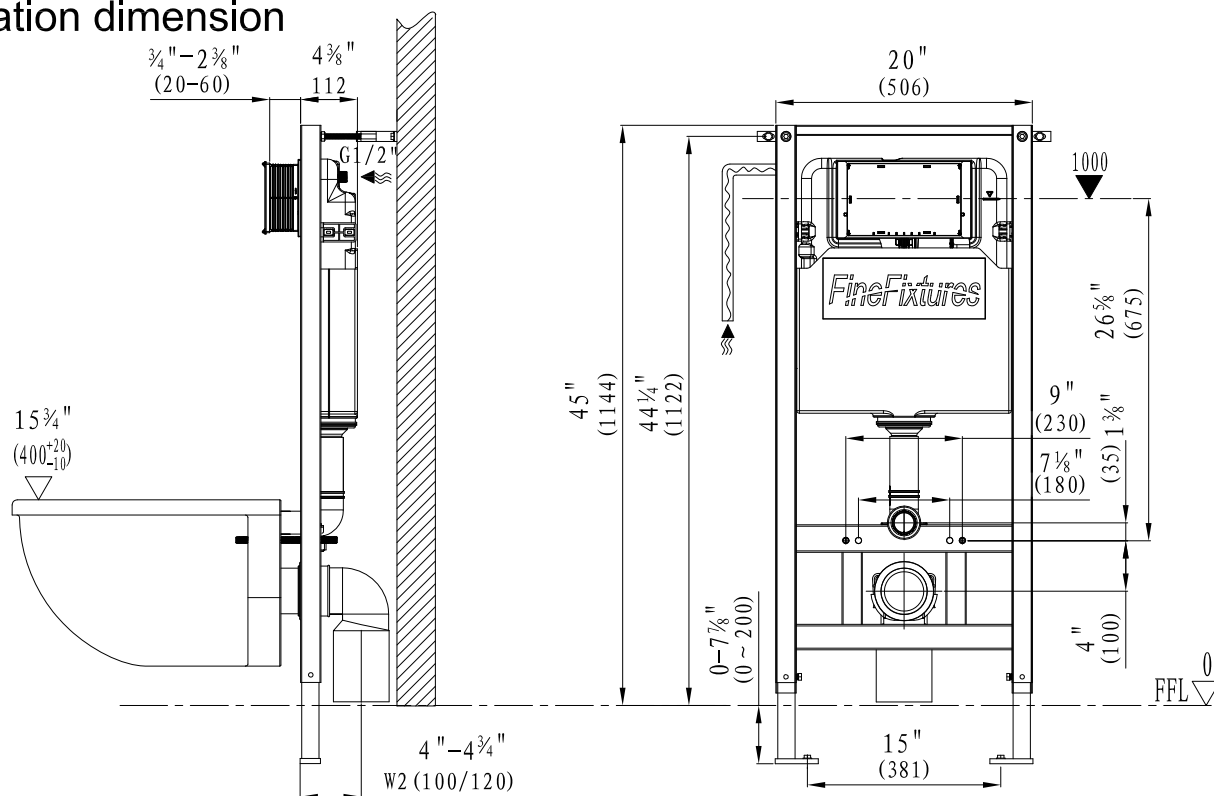
## Concealed Tank - Model: CT06 Installation Manual



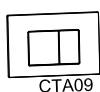
### List of main installation accessories

NO.	Description	Qty	Function
1	Angle valve	1	Fill valve inlet and shut-off
2	Cistern cover	1	Airproof tank and mounting of locking bracket
3	Plastic holder	1	To reserve space for installation of actuator at wall building
4	Plastic holder cover	1	To prevent dust and impurities into tank at wall building
5	Connecting screw	2	To mount ceramic bowl
6	Protective cover	2	To protect connecting screw at wall building
7	Ceramic bowl fixing accessories	2	To mount ceramic bowl
8	Straight tube	1	To joint cistern into ceramic bowl
9	Connecting pipe	1	(cutting in accordance with wall thickness)
10	Piping stopper	2	To reserve space for straight tube and connecting pipe
11	Draining syphon	1	To discharge liquid and solid waste from ceramic bowl.
12	Draining syphon holder	1	
13	Mounting bracket	1	To mount draining syphon

## Installation dimension



## Options



CTA09 Dual flush actuator; white, black or chrome finish

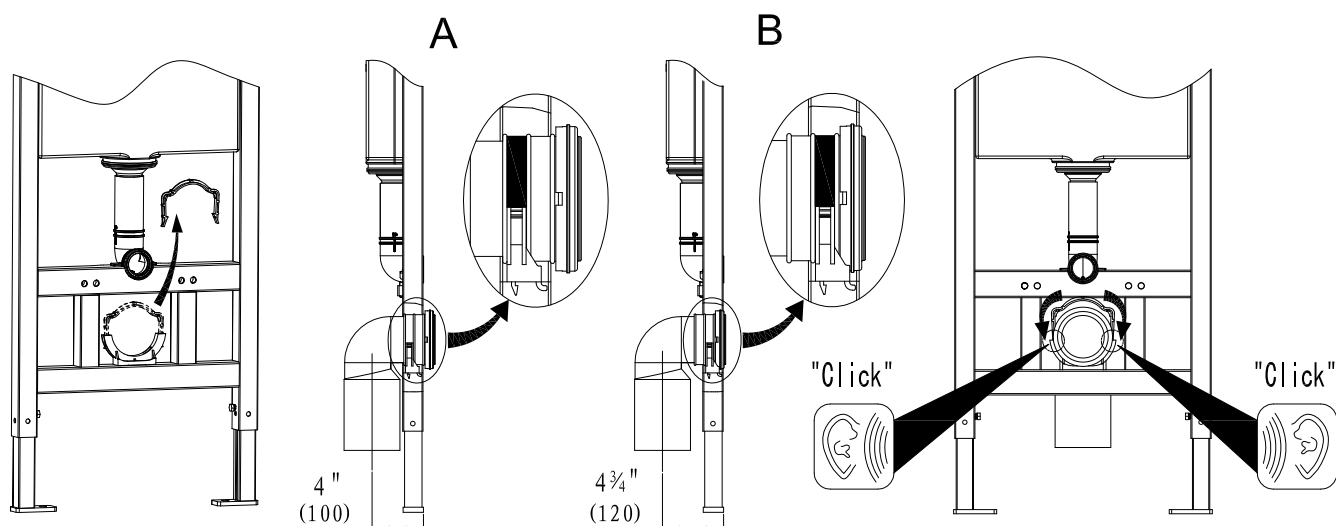


CTA11 Dual flush actuator; white, black or chrome finish

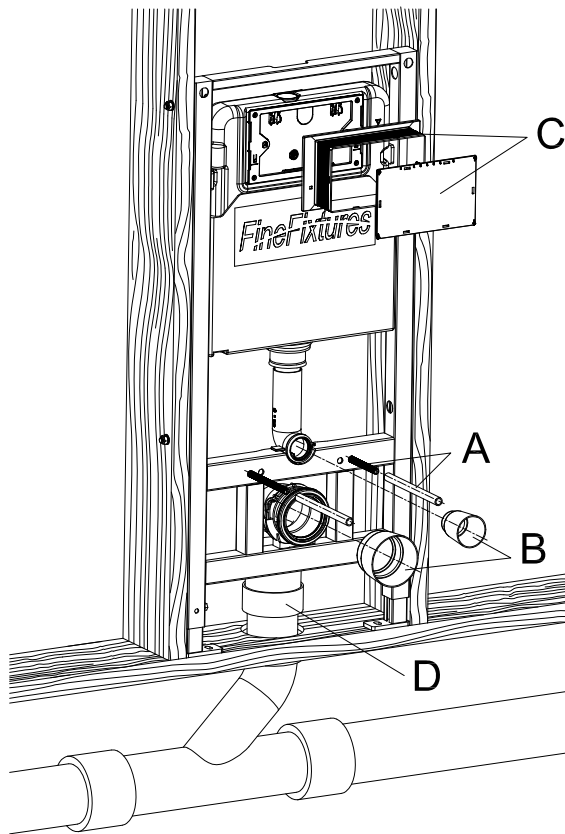
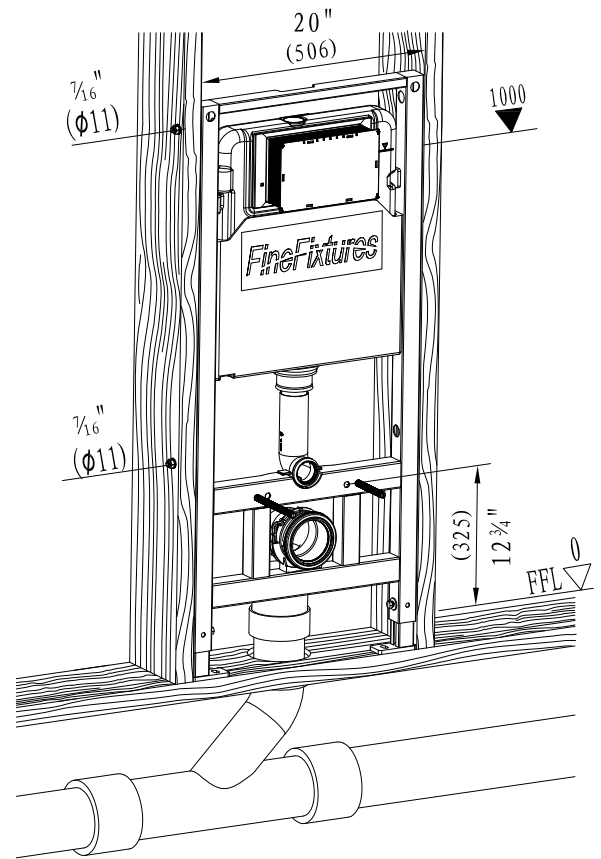
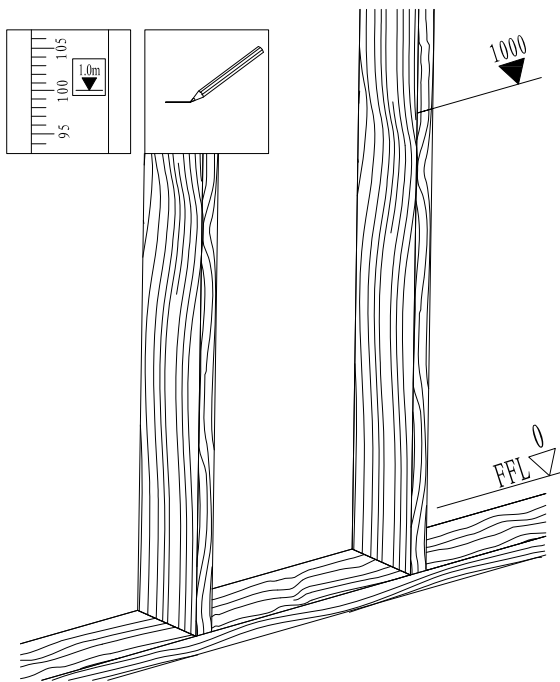


CTA12 Dual flush actuator; white, black or chrome finish

## Installation of draining syphon

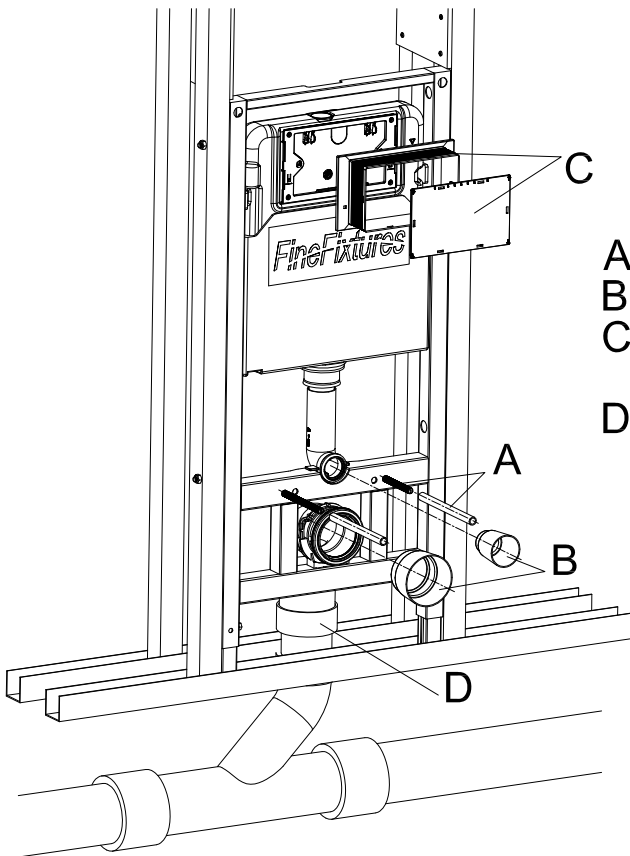
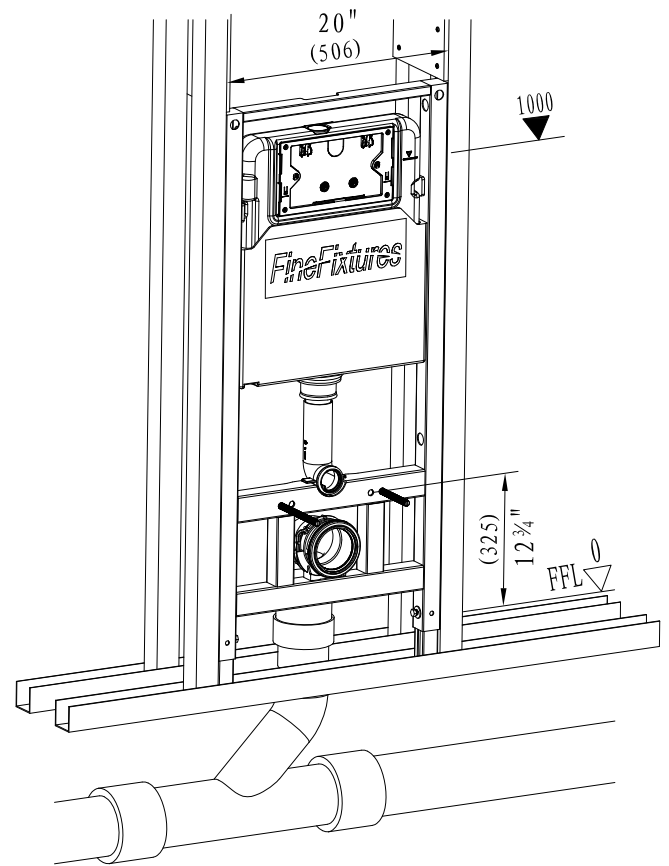
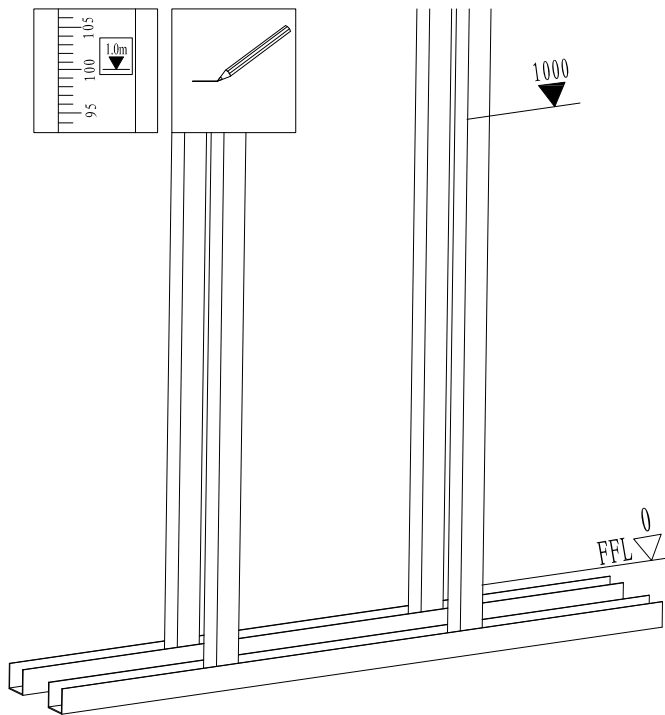


## Installation of concealed cistern



- A Install M12 rods with plastic sleeves,
- B pipe plugs and
- C mud guard during the rough-in installation
- D Complete waste elbow connection with coupling to waste pipe.

## Installation of concealed cistern

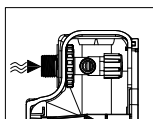


- A Install M12 rods with plastic sleeves,
- B pipe plugs and
- C mud guard during the rough-in installation
- D Complete waste elbow connection with coupling to waste pipe.

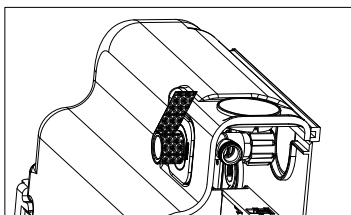
# Installation of water supply

## 1 Optional of water inlet way

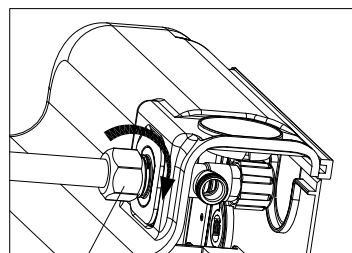
A



2

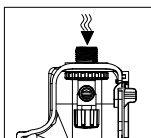


3

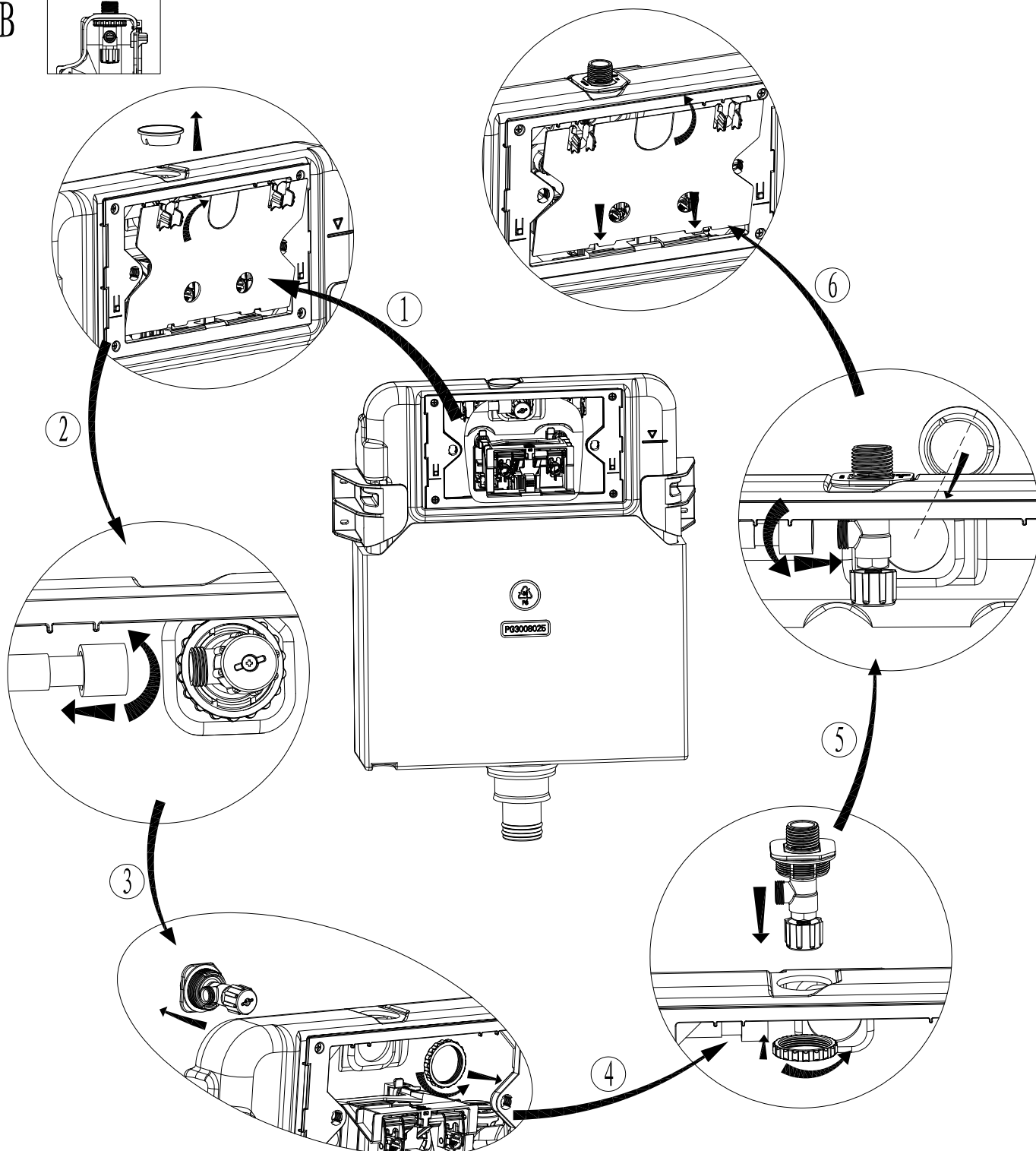


G 1/2"

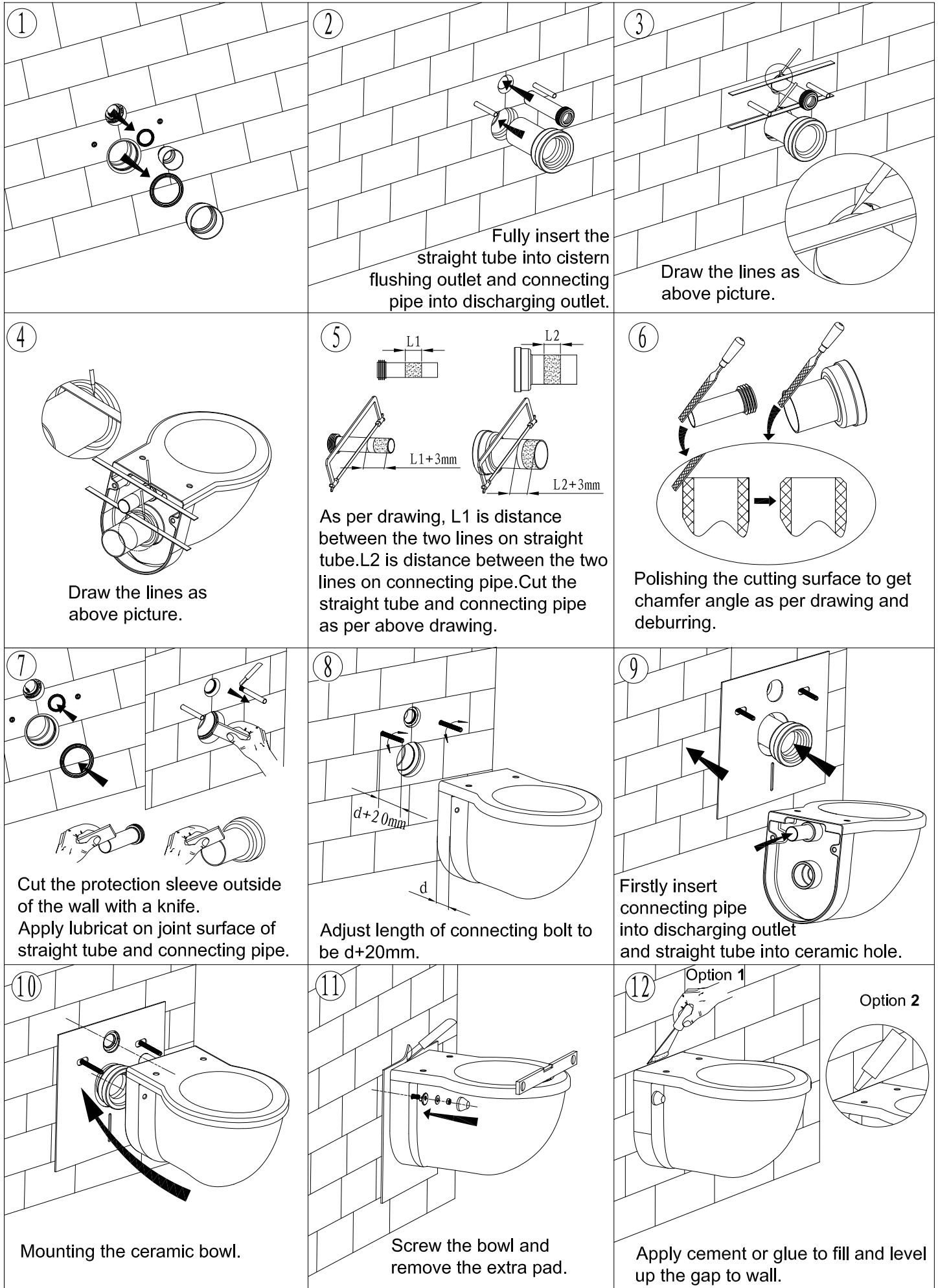
B



If choose top water inlet, need to reinstall angle valve, specific steps are as follows:

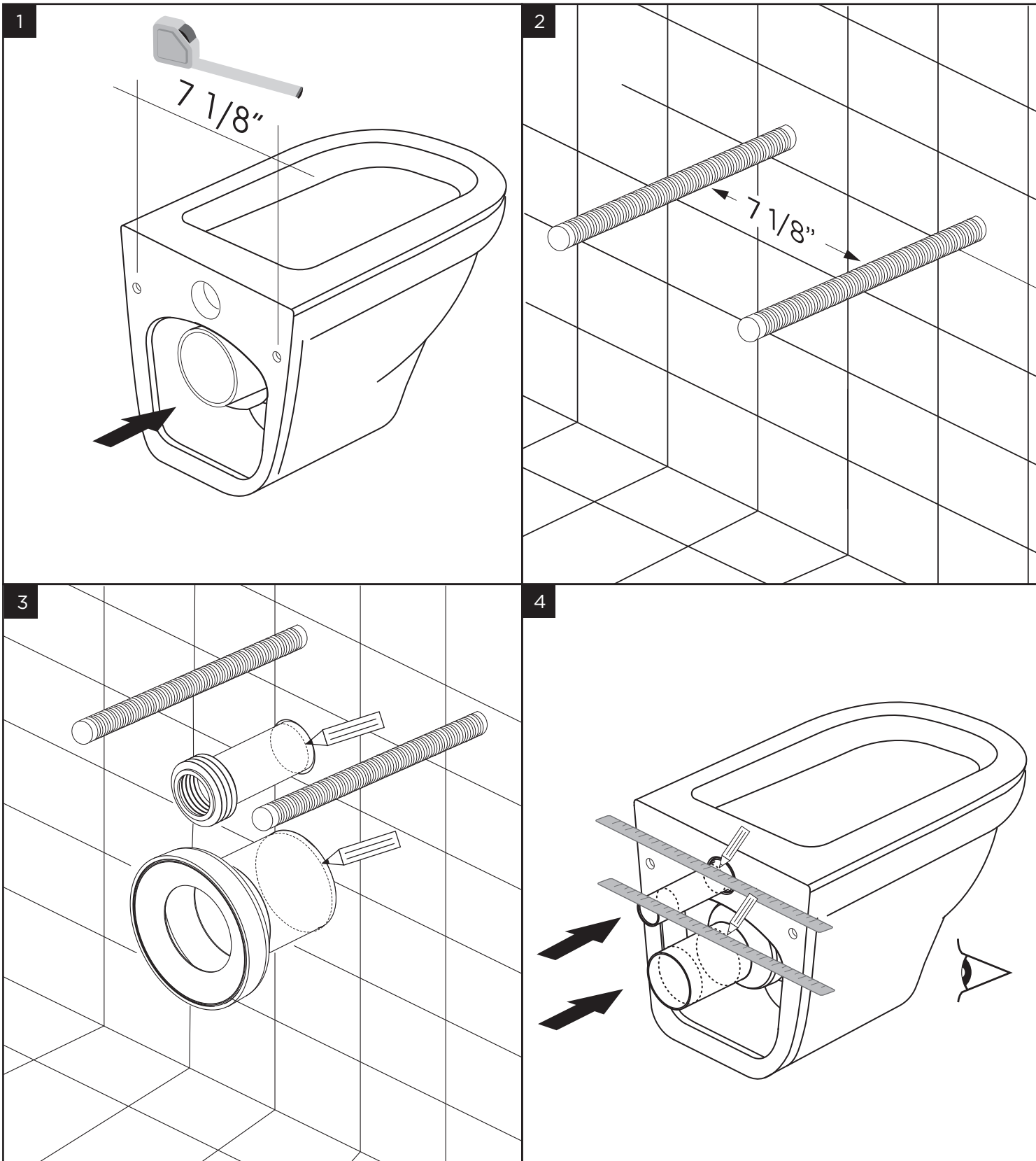


# Mounting of ceramic bowl

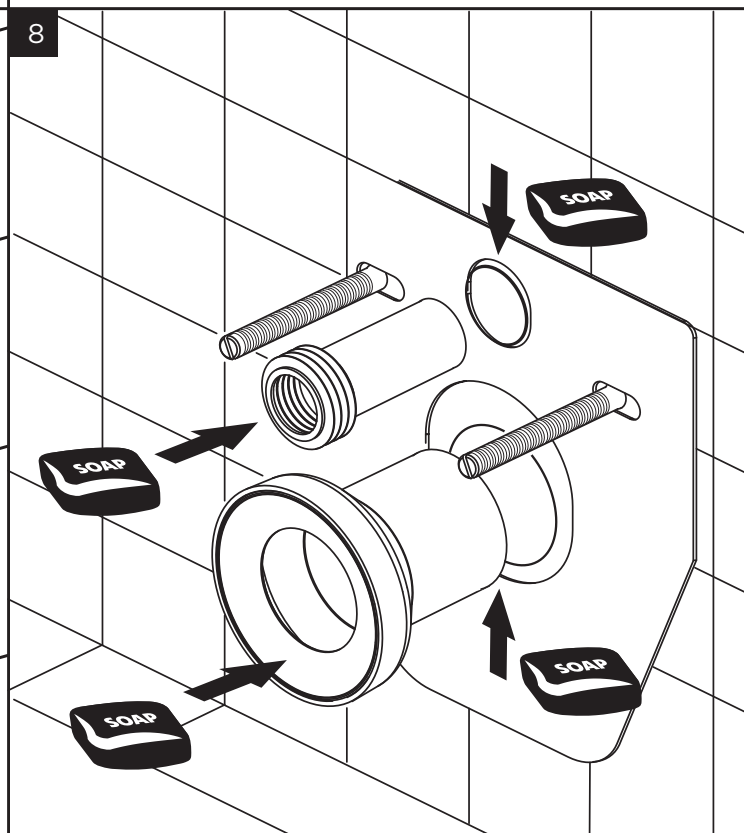
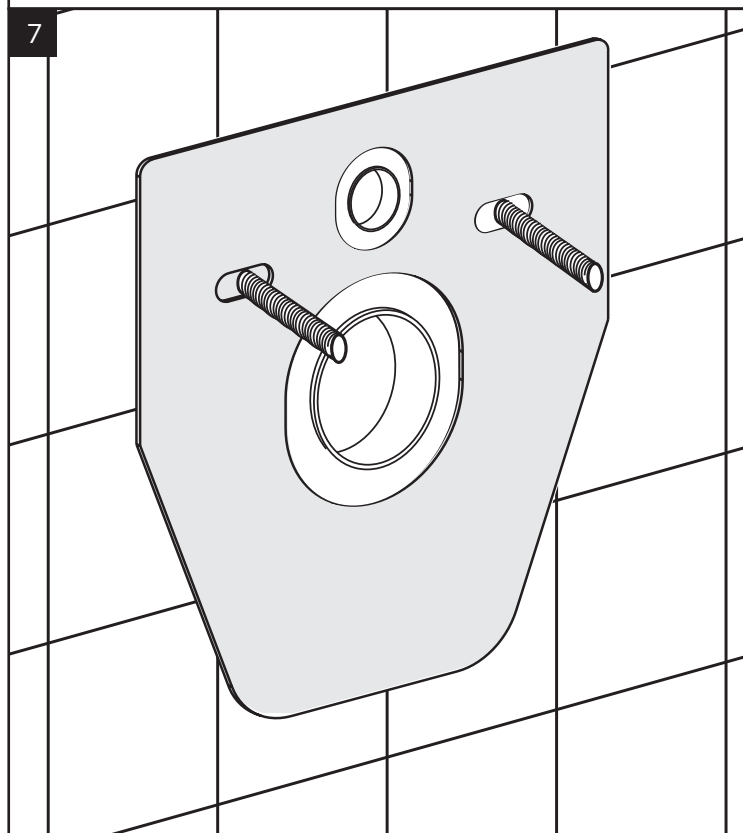
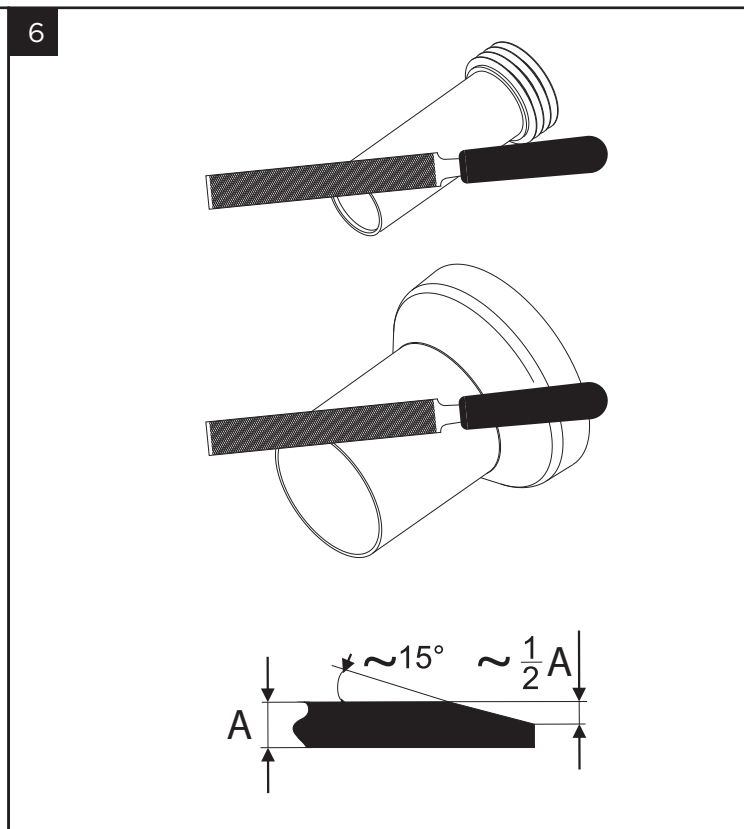
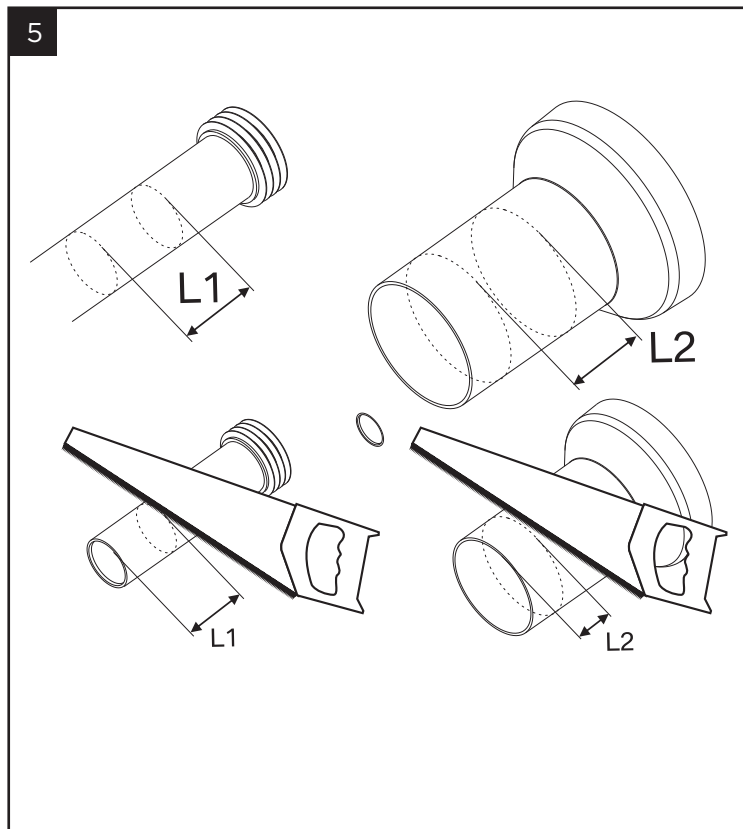


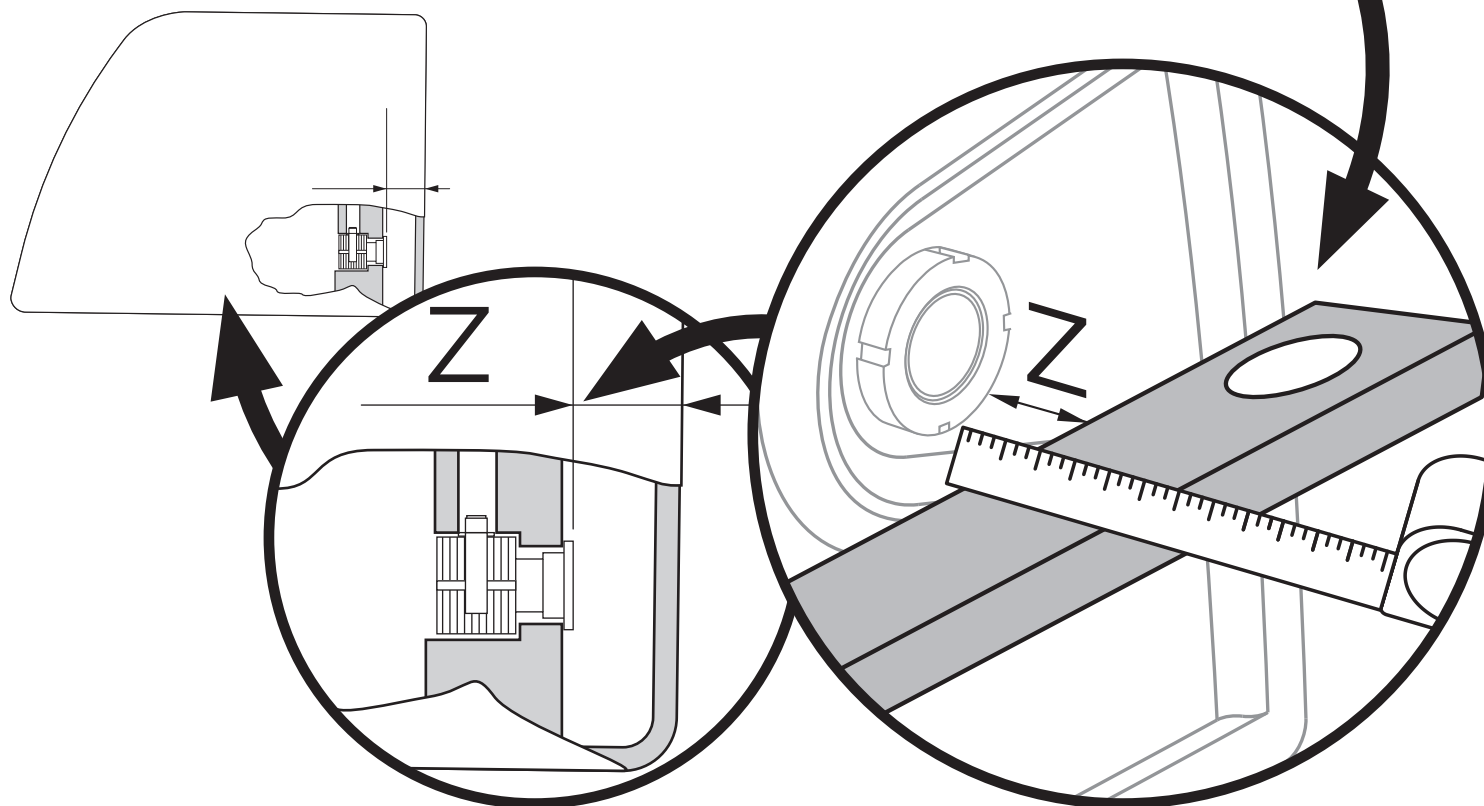
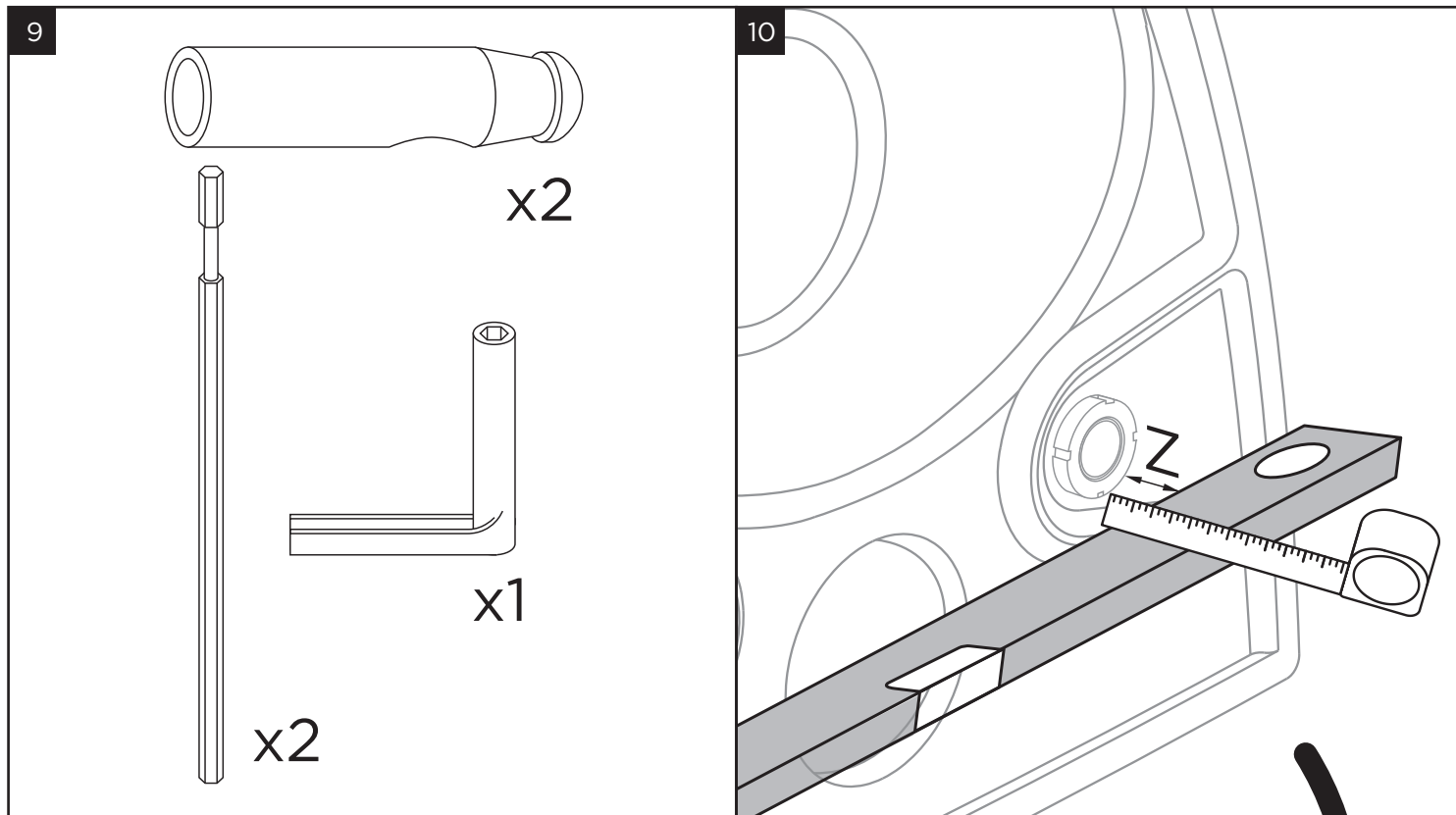
# Installation Instructions

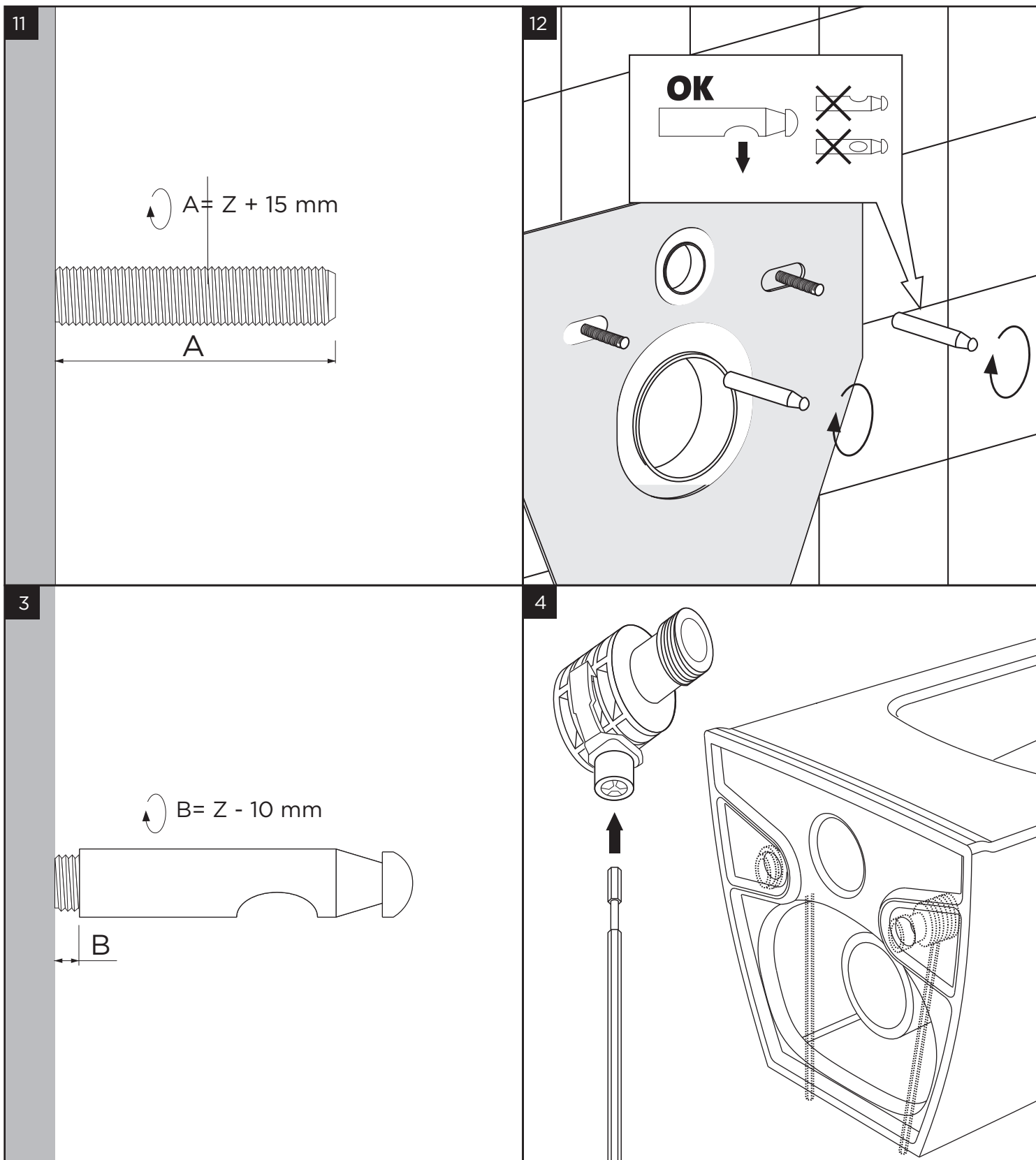
## #WT12RM

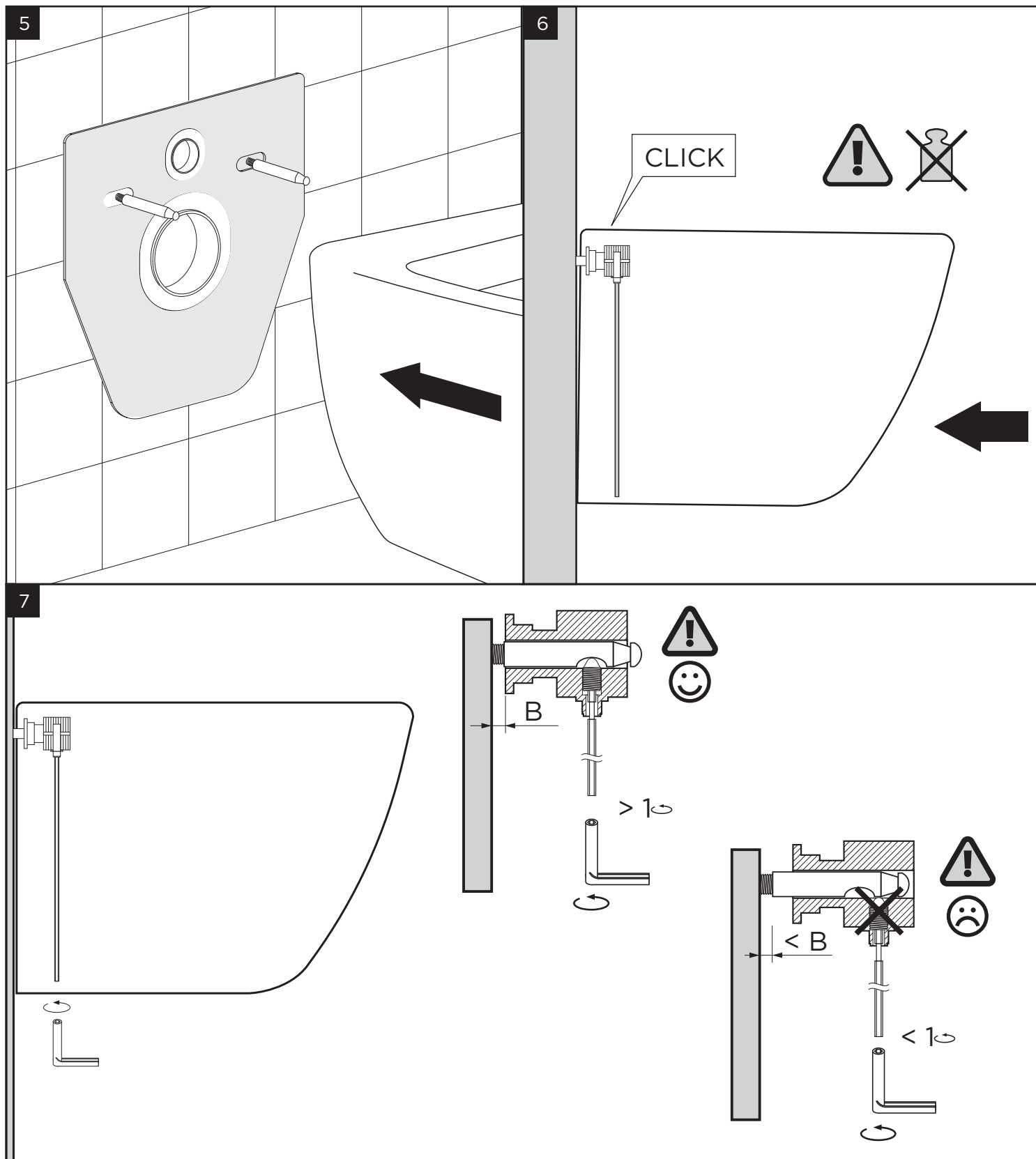


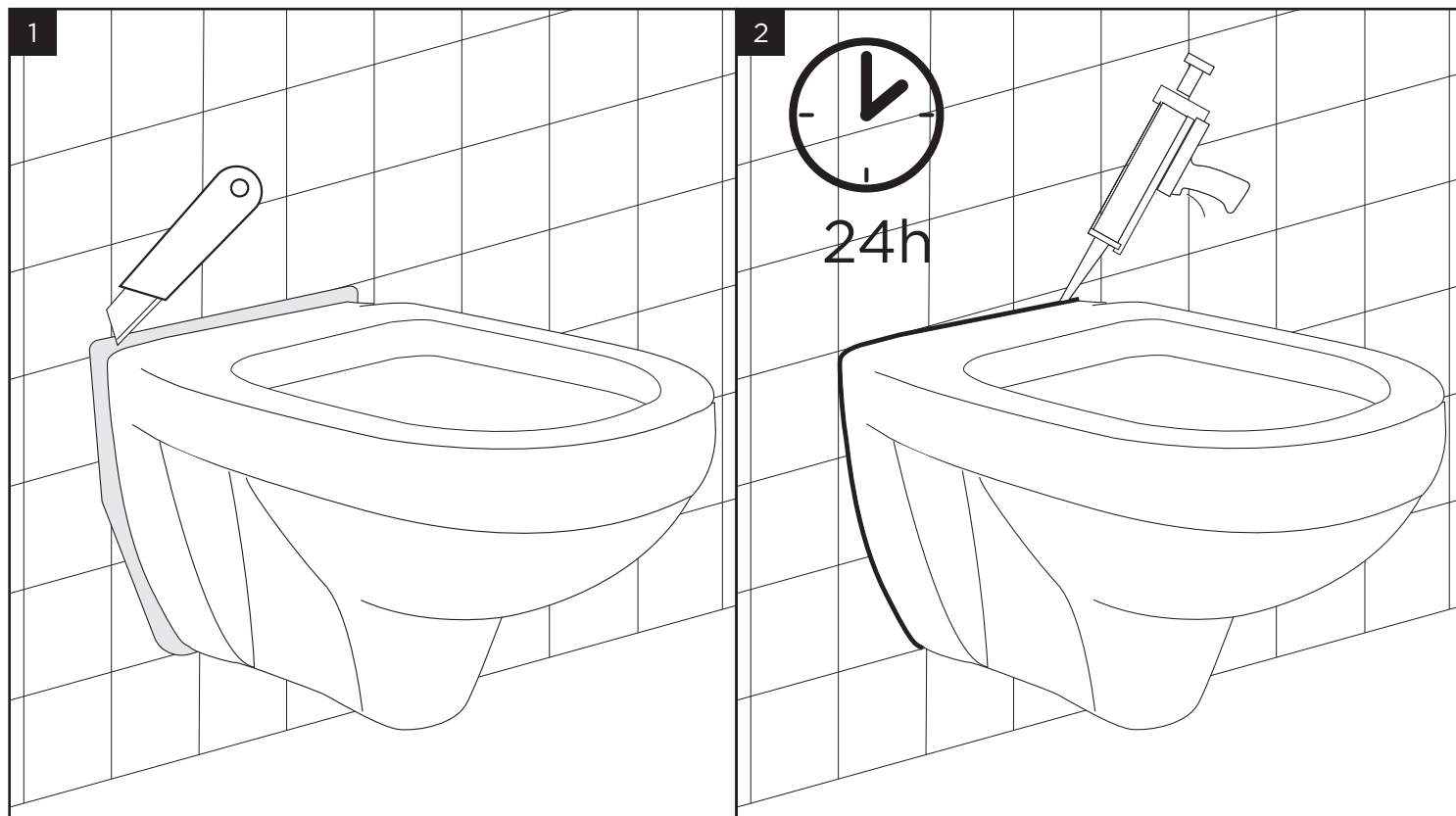












Retain these installation instructions for future reference!

Thank you for using Fine Fixtures!