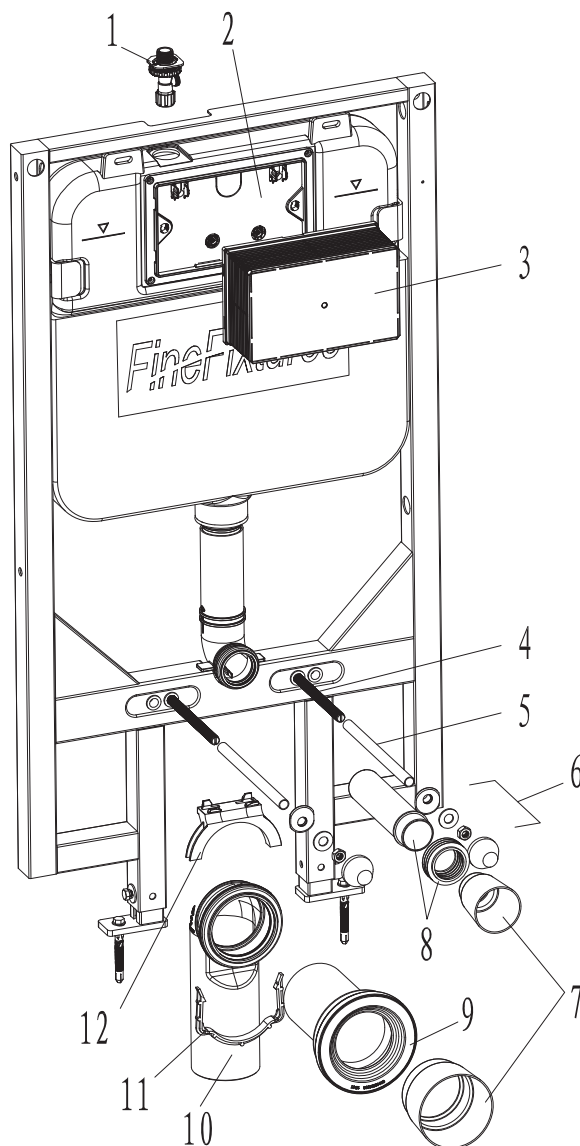


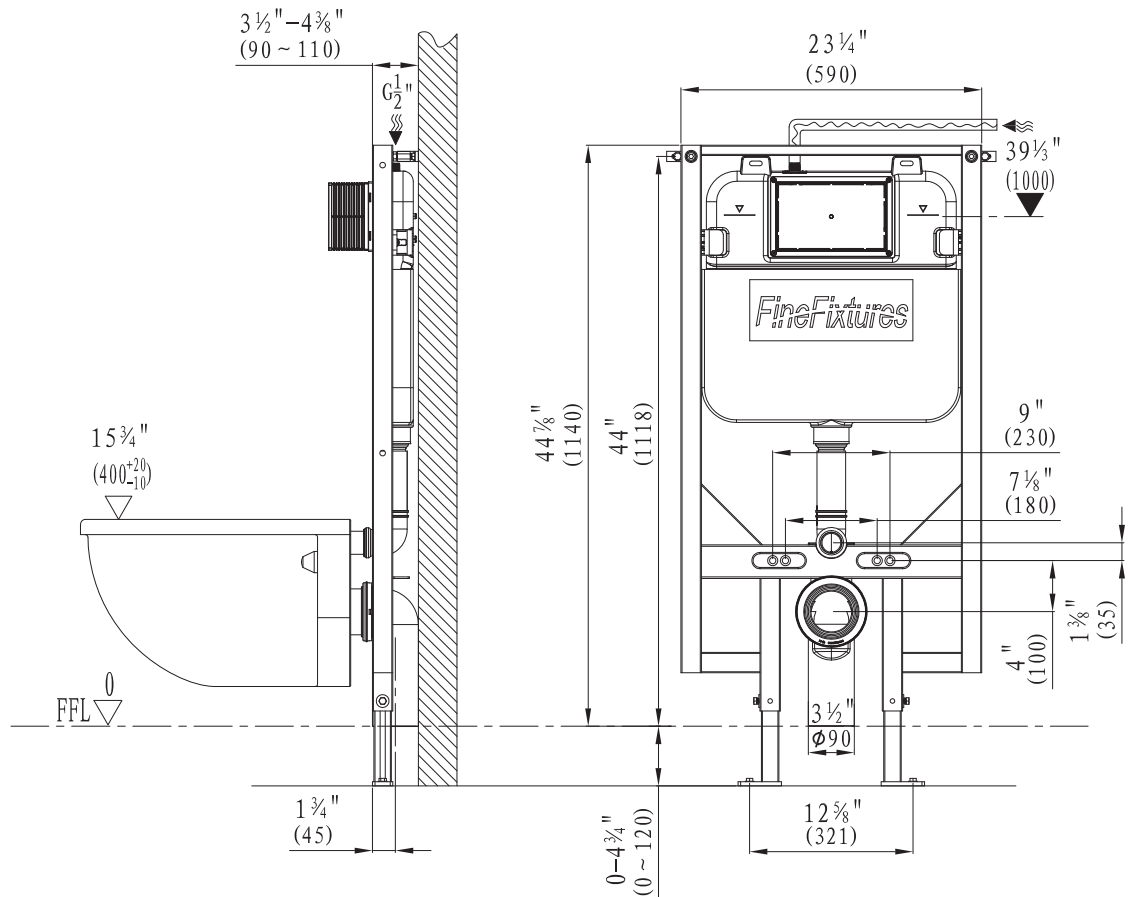
## Concealed Tank - Model: CT04 Installation Manual



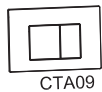
### List of main installation accessories

NO.	Description	Qty	Function
1	Angle valve	1	Fill valve inlet and shut-off
2	Cistern cover	1	Airproof tank and mounting of locking bracket
3	Plastic holder	1	To reserve space for installation of actuator at wall building To prevent dust and impurities into tank at wall building
4	Connecting screw	2	To mount ceramic bowl
5	Protective cover	2	To protect connecting screw at wall building
6	Ceramic bowl fixing accessories	2	To mount ceramic bowl
7	Piping stopper	2	To reserve space for straight tube and connecting pipe
8	Straight tube	1	To joint cistern into ceramic bowl
9	Connecting pipe	1	(cutting in accordance with wall thickness)
10	Discharge pipe	1	To discharge liquid and solid waste from ceramic bowl .
11	Mounting bracket	1	To mount draining syphon
12	Discharge pipe holder	1	

## Installation dimension



## Options



CTA09 Dual flush actuator; white, black or chrome finish



CTA11 Dual flush actuator; white, black or chrome finish



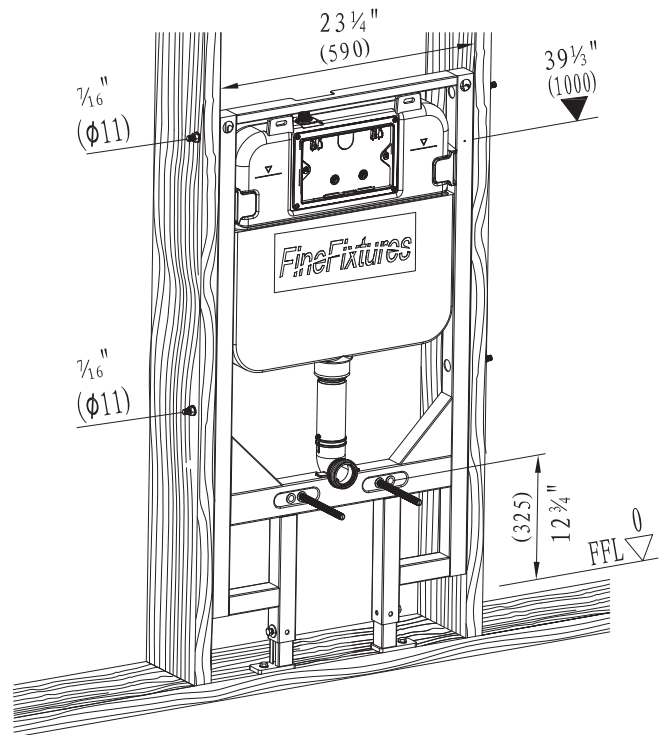
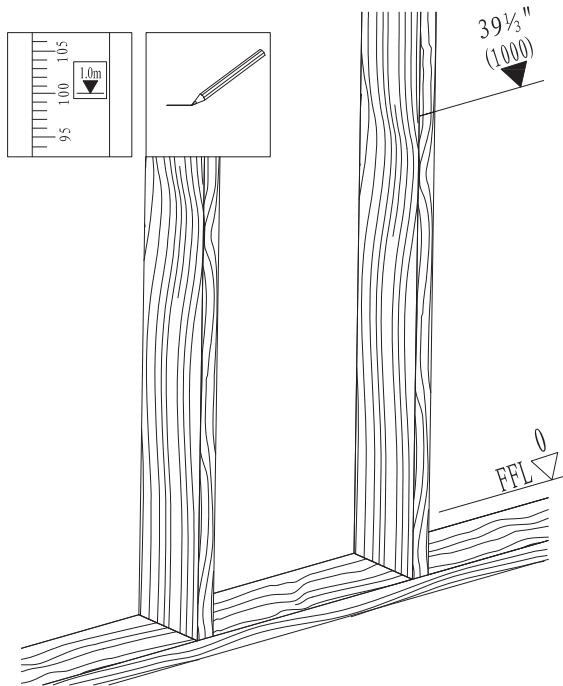
CTA12 Dual flush actuator; white, black or chrome finish

## Installation of concealed cistern

A

2

1

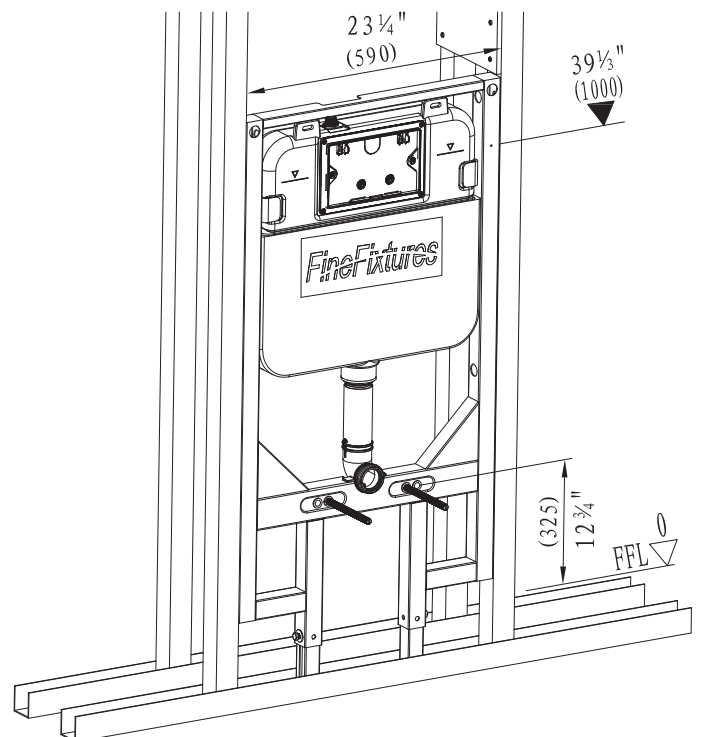
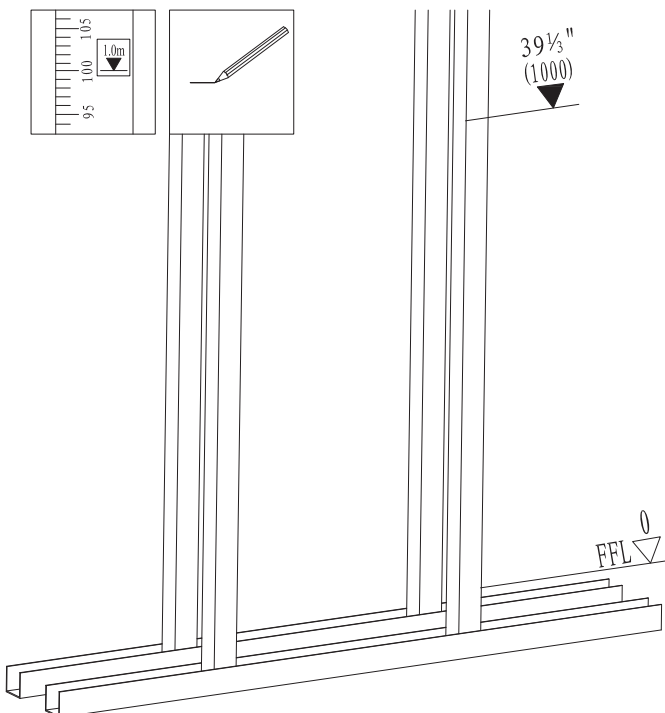


## Installation of concealed cistern

B

2

1

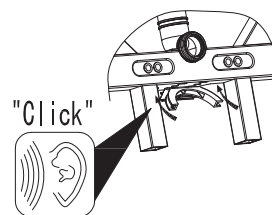
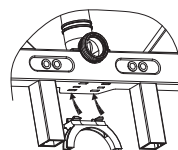
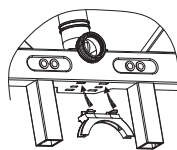
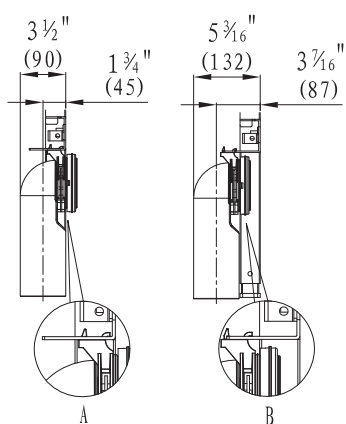


## Installation of draining syphon

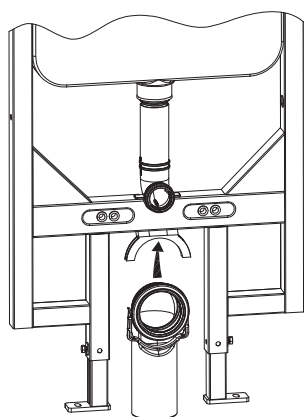
2

3

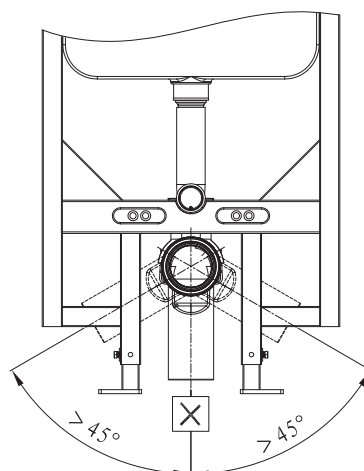
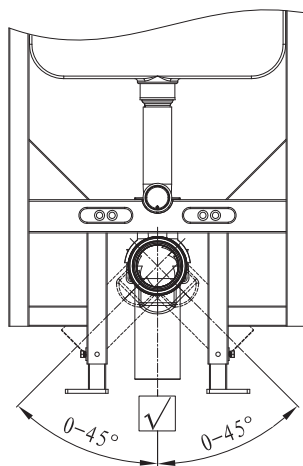
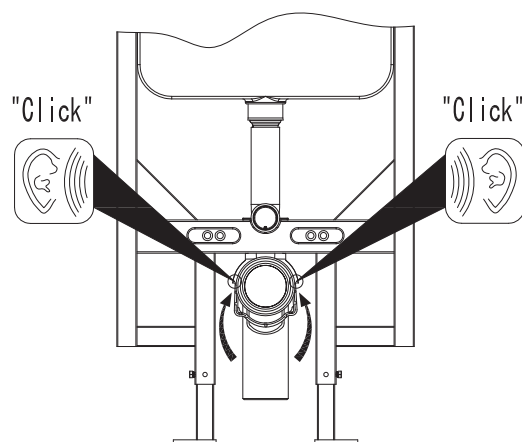
1



4



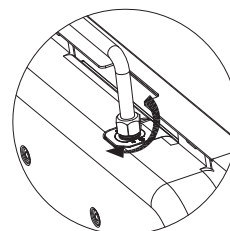
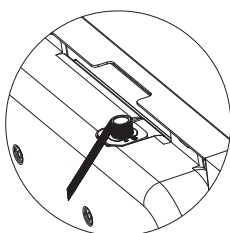
5



## Installation of water supply

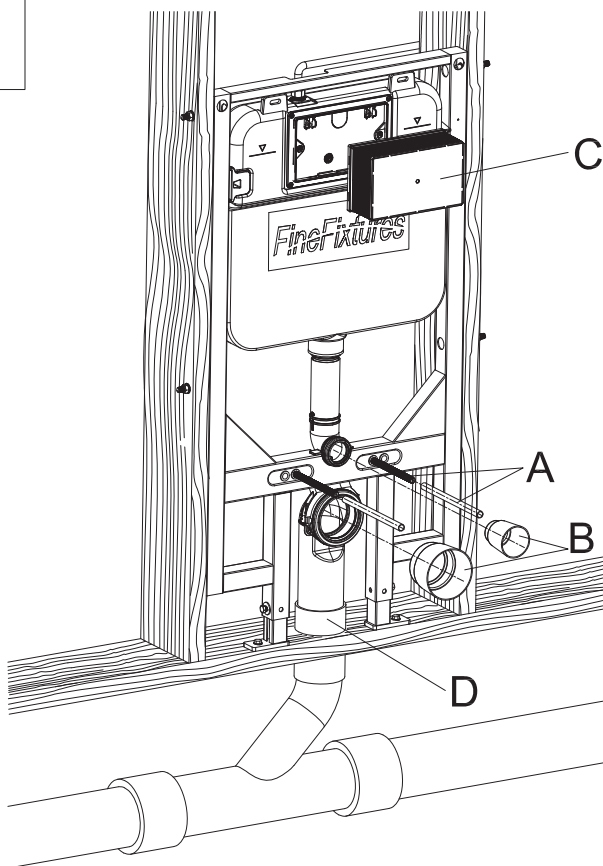
2

1



## Mounting of installation accessories

A

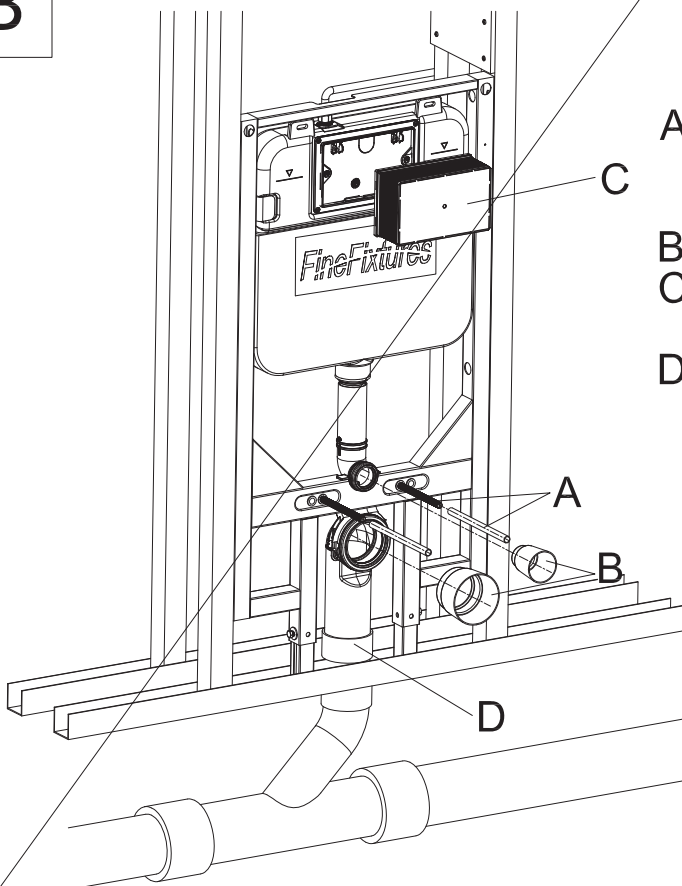


A Install M12 rods with plastic sleeves, on the inner holes. The rods should be installed at 7" apart.

B Install pipe plugs and  
C mud guard during the rough-in installation

D Complete waste elbow connection with 3" DWV shielded coupling(D-provided) to waste pipe.

B

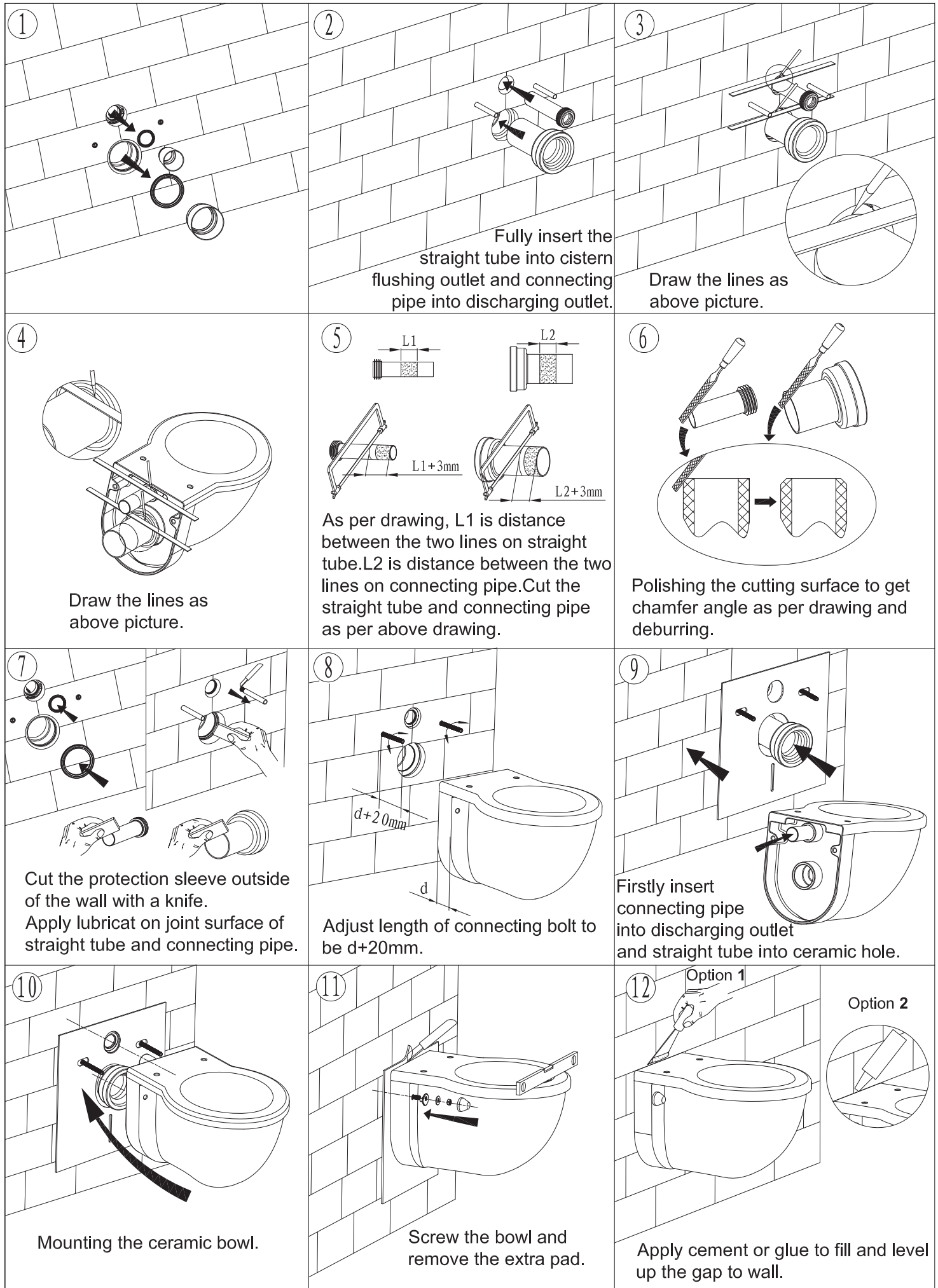


A Install M12 rods with plastic sleeves, on the inner holes. The rods should be installed at 7" apart.

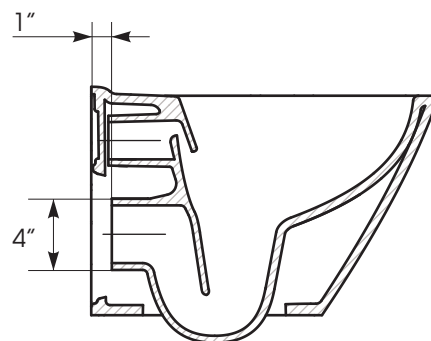
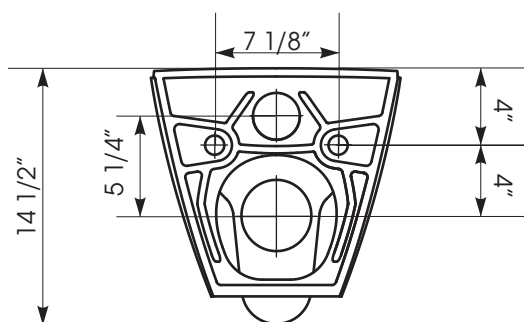
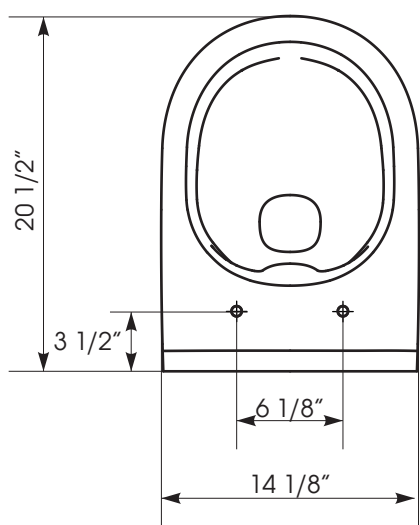
B Install pipe plugs and  
C mud guard during the rough-in installation

D Complete waste elbow connection with 3" DWV shielded coupling(D-provided) to waste pipe.

# Mounting of ceramic bowl



## DIMENSIONS/TECHNICAL DATA



**ATTENTION!** Dimensions may vary by up to  $\frac{3}{8}"$ . It is highly recommended to pull all dimensions of actual model for installation and measuring purposes.

## TECHNICAL DATA