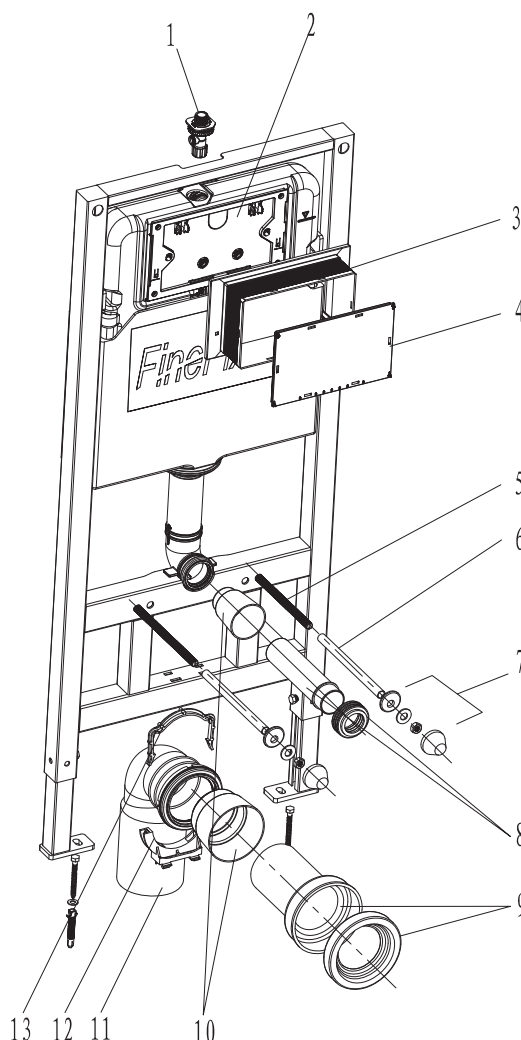


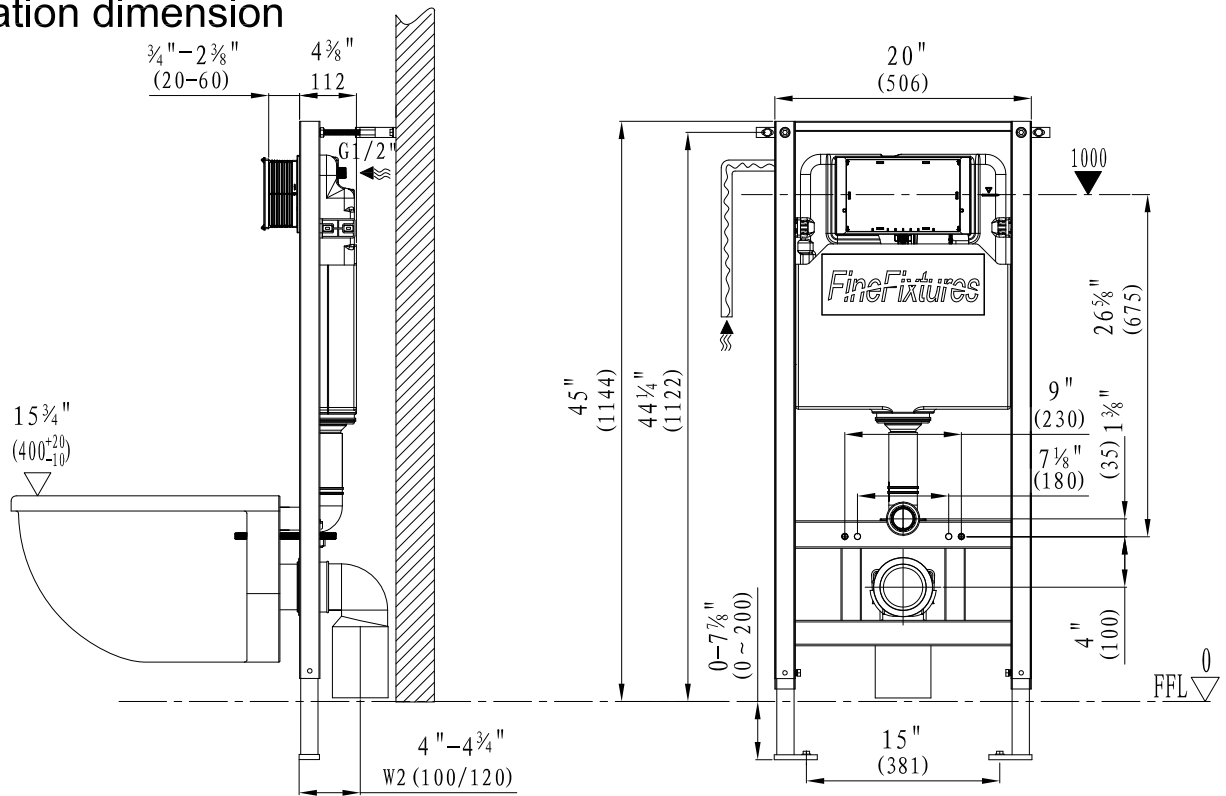
Concealed Tank - Model: CT06 Installation Manual



List of main installation accessories

NO.	Description	Qty	Function
1	Angle valve	1	Fill valve inlet and shut-off
2	Cistern cover	1	Airproof tank and mounting of locking bracket
3	Plastic holder	1	To reserve space for installation of actuator at wall building
4	Plastic holder cover	1	To prevent dust and impurities into tank at wall building
5	Connecting screw	2	To mount ceramic bowl
6	Protective cover	2	To protect connecting screw at wall building
7	Ceramic bowl fixing accessories	2	To mount ceramic bowl
8	Straight tube	1	To joint cistern into ceramic bowl
9	Connecting pipe	1	(cutting in accordance with wall thickness)
10	Piping stopper	2	To reserve space for straight tube and connecting pipe
11	Draining syphon	1	To discharge liquid and solid waste from ceramic bowl.
12	Draining syphon holder	1	
13	Mounting bracket	1	To mount draining syphon

Installation dimension



Options



CTA09 Dual flush actuator; white,black or chrome finish

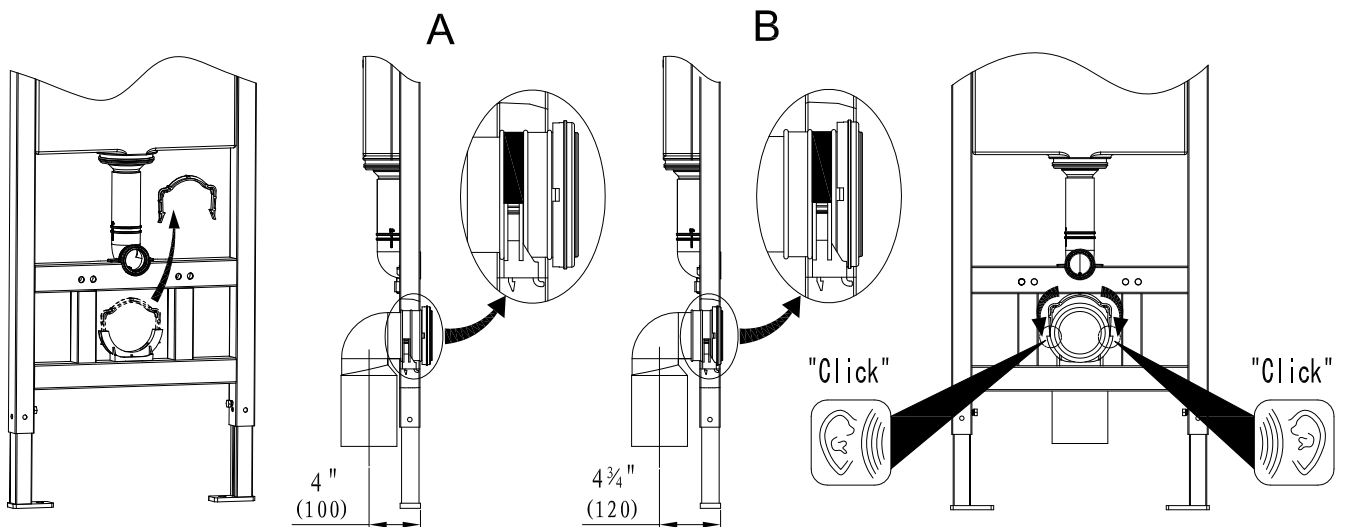


CTA11 Dual flush actuator; white,black or chrome finish

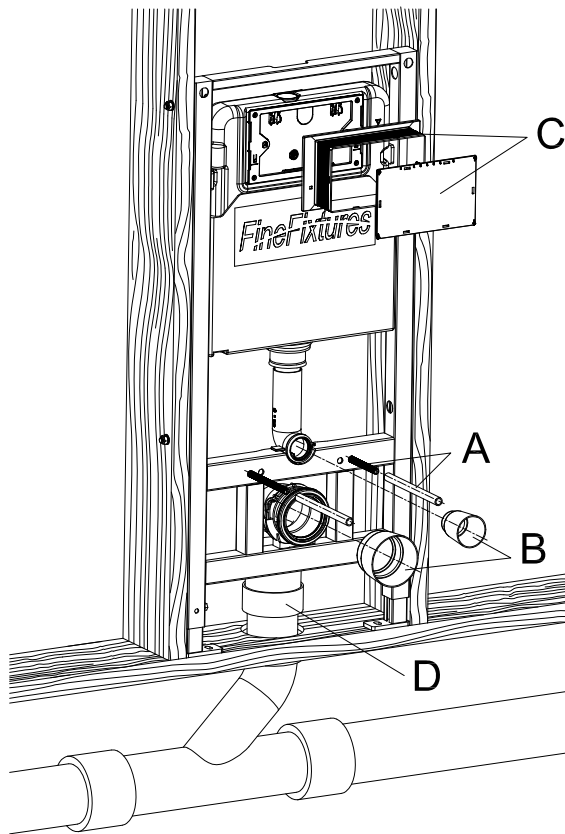
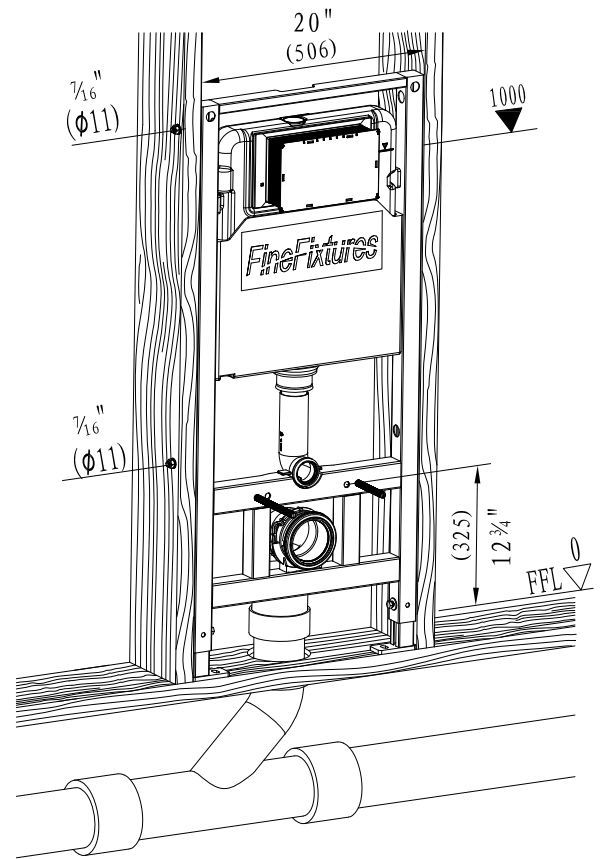
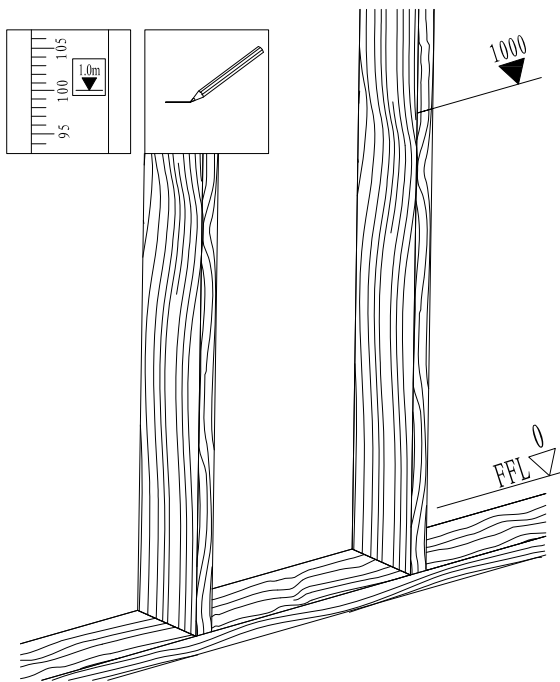


CTA12 Dual flush actuator; white,black or chrome finish

Installation of draining syphon

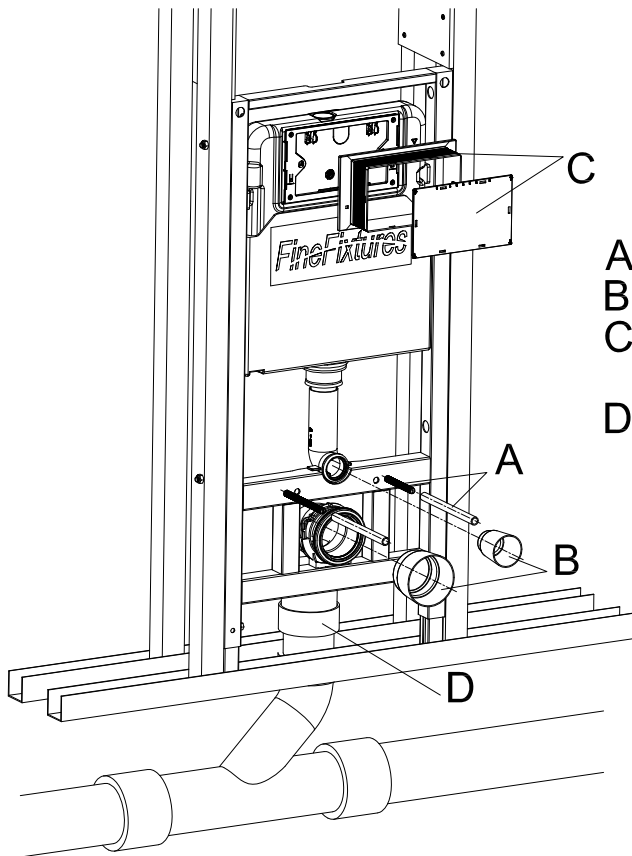
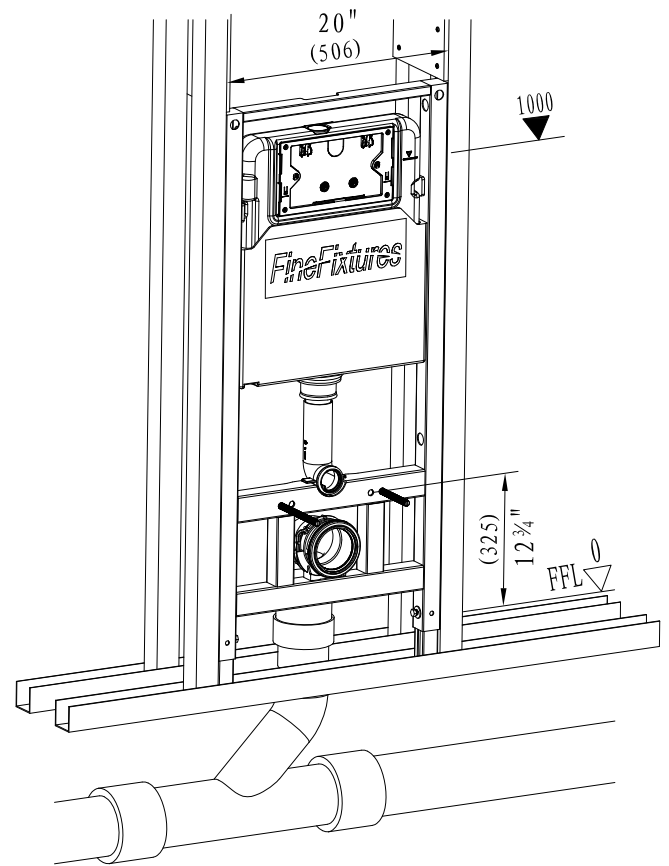
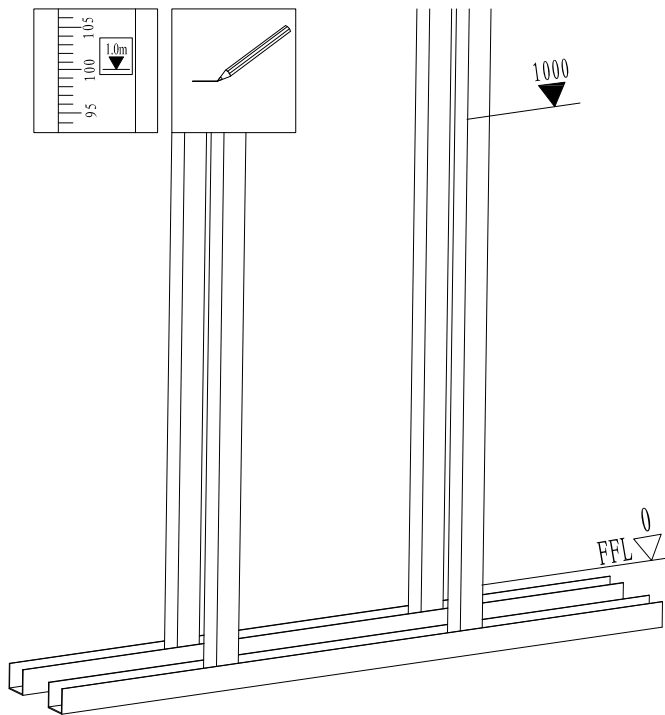


Installation of concealed cistern



- A Install M12 rods with plastic sleeves,
- B pipe plugs and
- C mud guard during the rough-in installation
- D Complete waste elbow connection with coupling to waste pipe.

Installation of concealed cistern

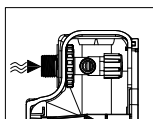


- A Install M12 rods with plastic sleeves,
- B pipe plugs and
- C mud guard during the rough-in installation
- D Complete waste elbow connection with coupling to waste pipe.

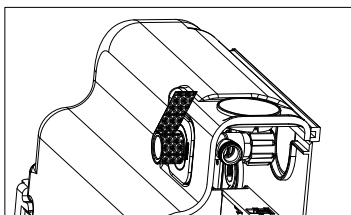
Installation of water supply

1 Optional of water inlet way

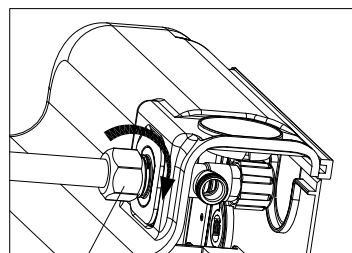
A



2

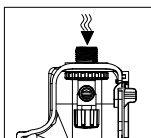


3

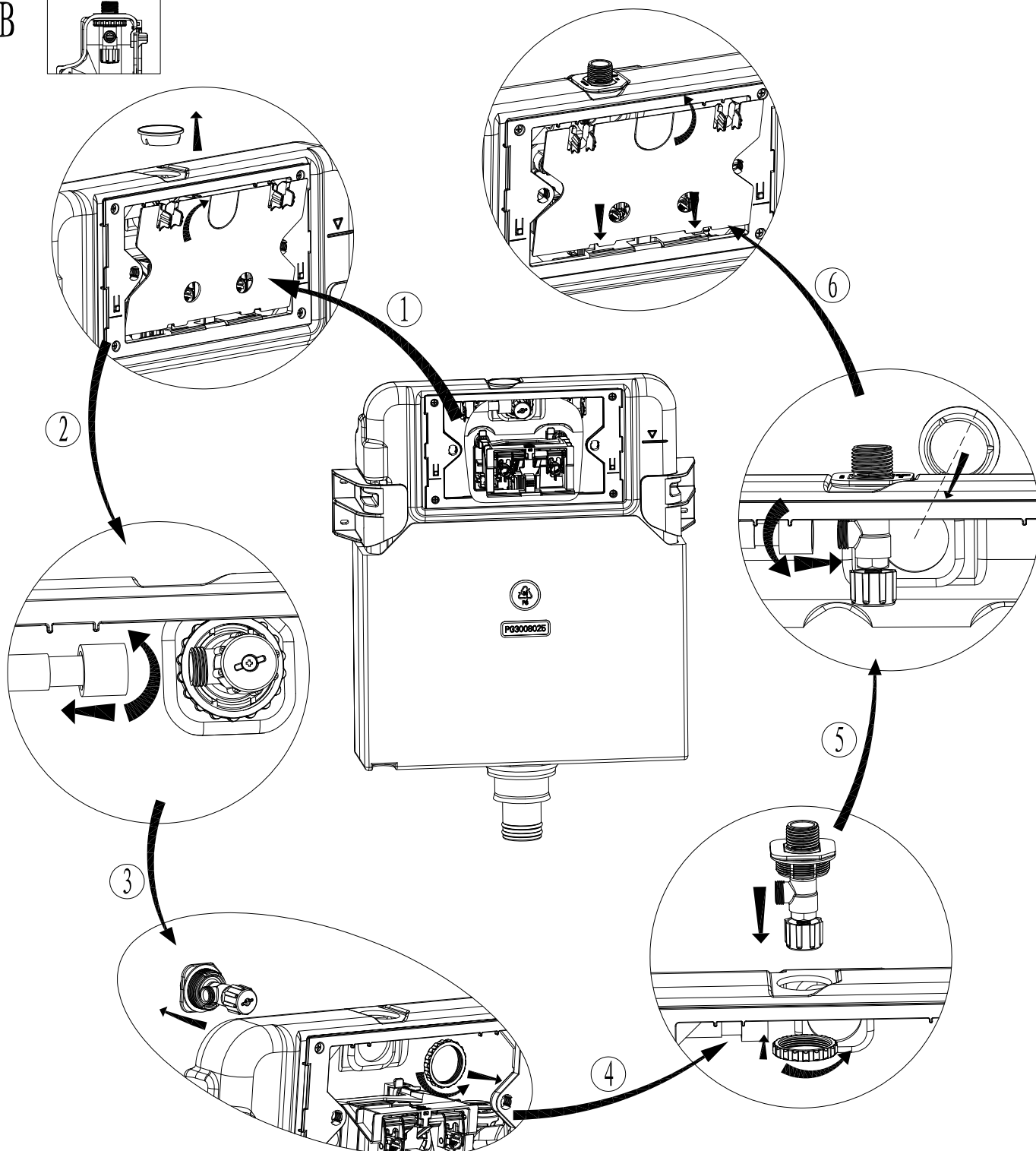


G 1/2"

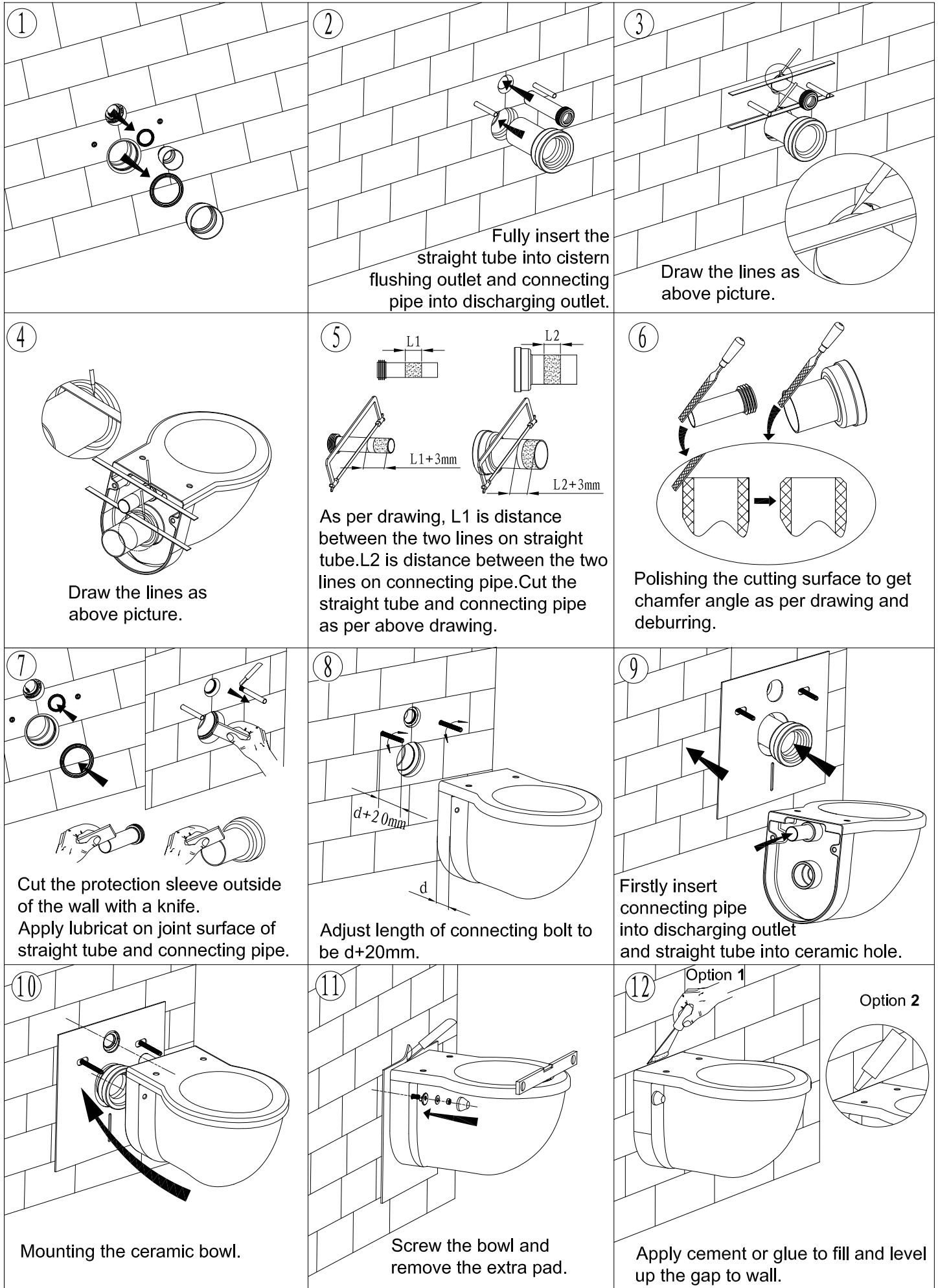
B



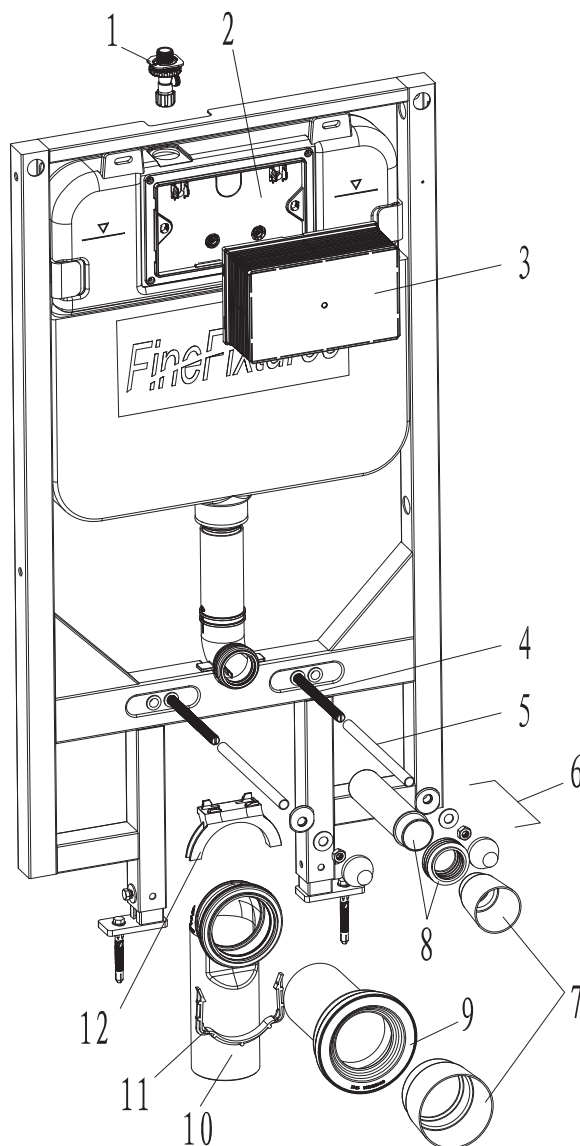
If choose top water inlet, need to reinstall angle valve, specific steps are as follows:



Mounting of ceramic bowl



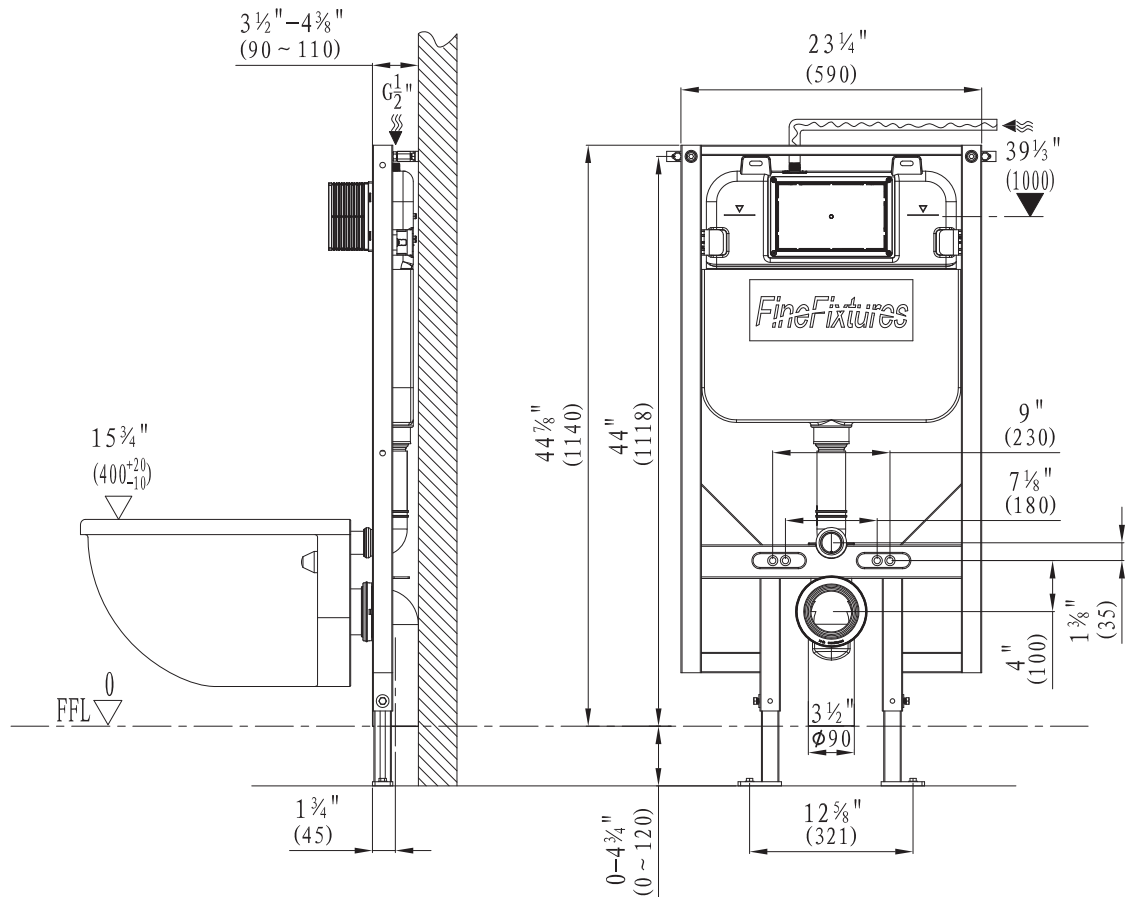
Concealed Tank - Model: CT04 Installation Manual



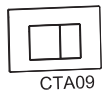
List of main installation accessories

NO.	Description	Qty	Function
1	Angle valve	1	Fill valve inlet and shut-off
2	Cistern cover	1	Airproof tank and mounting of locking bracket
3	Plastic holder	1	To reserve space for installation of actuator at wall building To prevent dust and impurities into tank at wall building
4	Connecting screw	2	To mount ceramic bowl
5	Protective cover	2	To protect connecting screw at wall building
6	Ceramic bowl fixing accessories	2	To mount ceramic bowl
7	Piping stopper	2	To reserve space for straight tube and connecting pipe
8	Straight tube	1	To joint cistern into ceramic bowl
9	Connecting pipe	1	(cutting in accordance with wall thickness)
10	Discharge pipe	1	To discharge liquid and solid waste from ceramic bowl .
11	Mounting bracket	1	To mount draining syphon
12	Discharge pipe holder	1	

Installation dimension



Options



CTA09 Dual flush actuator; white, black or chrome finish



CTA11 Dual flush actuator; white, black or chrome finish



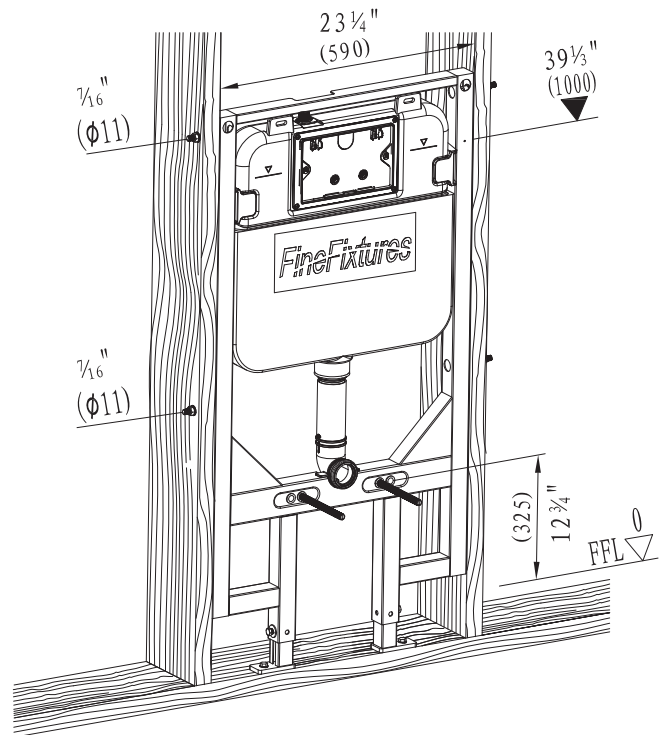
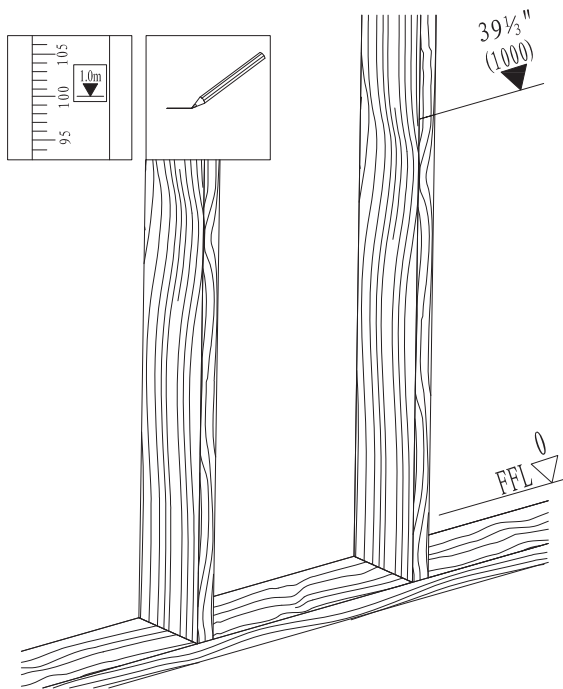
CTA12 Dual flush actuator; white, black or chrome finish

Installation of concealed cistern

A

2

1

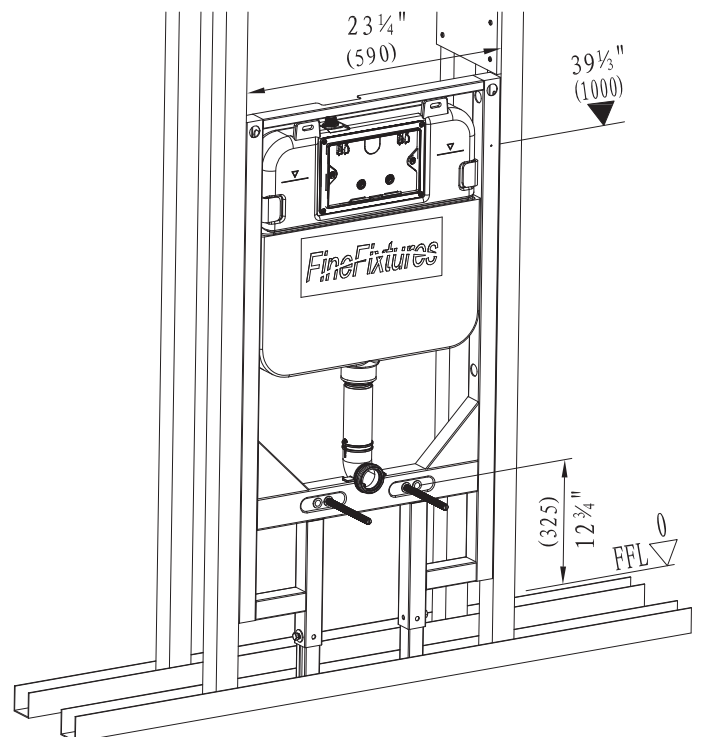
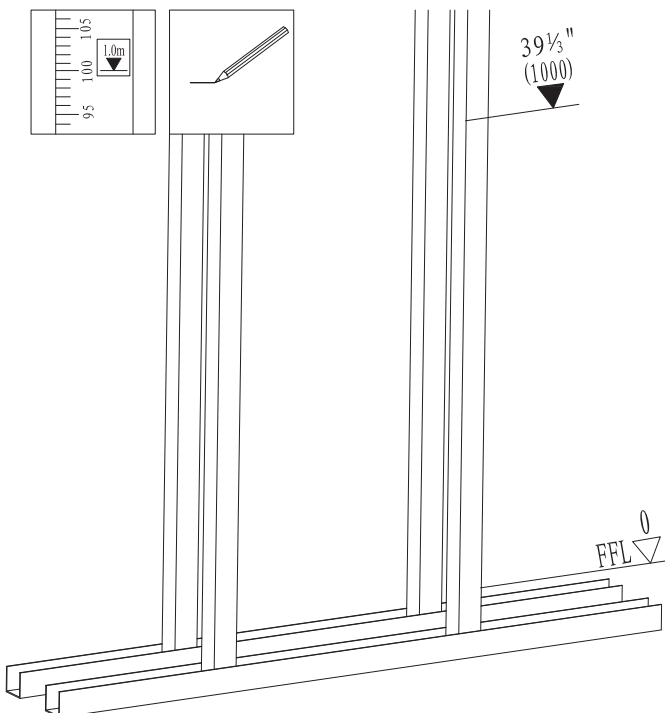


Installation of concealed cistern

B

2

1

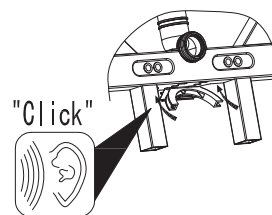
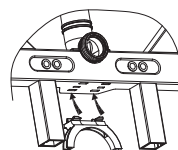
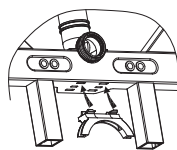
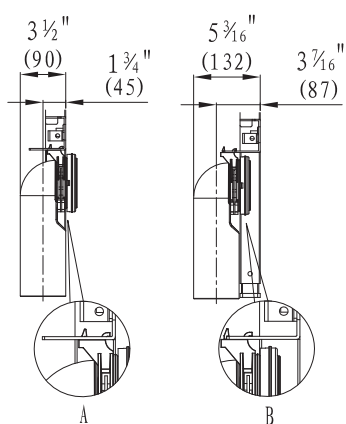


Installation of draining syphon

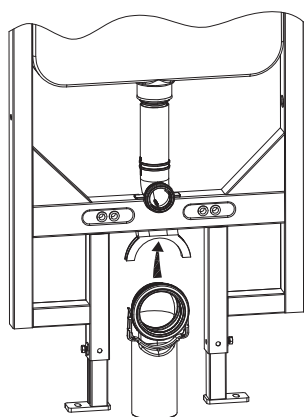
2

3

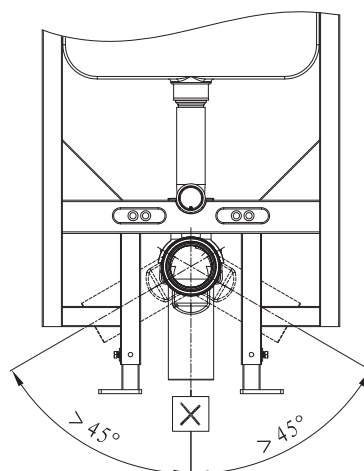
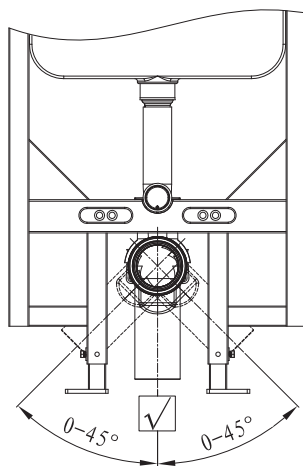
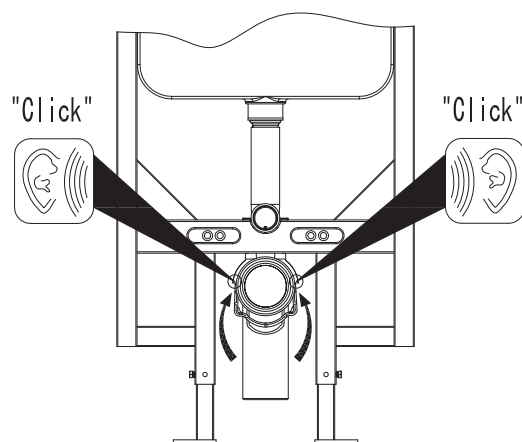
1



4



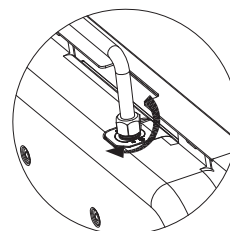
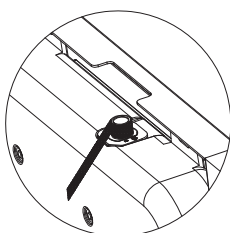
5



Installation of water supply

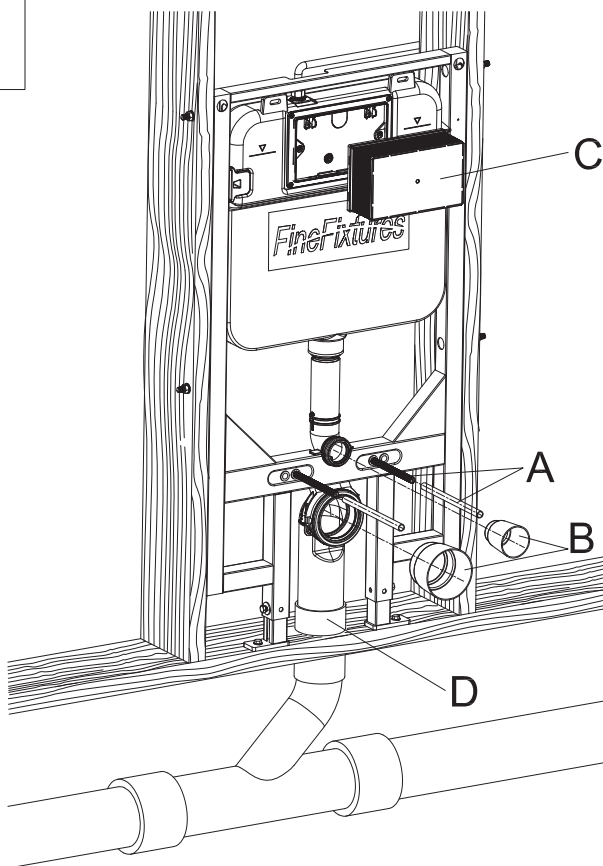
2

1



Mounting of installation accessories

A

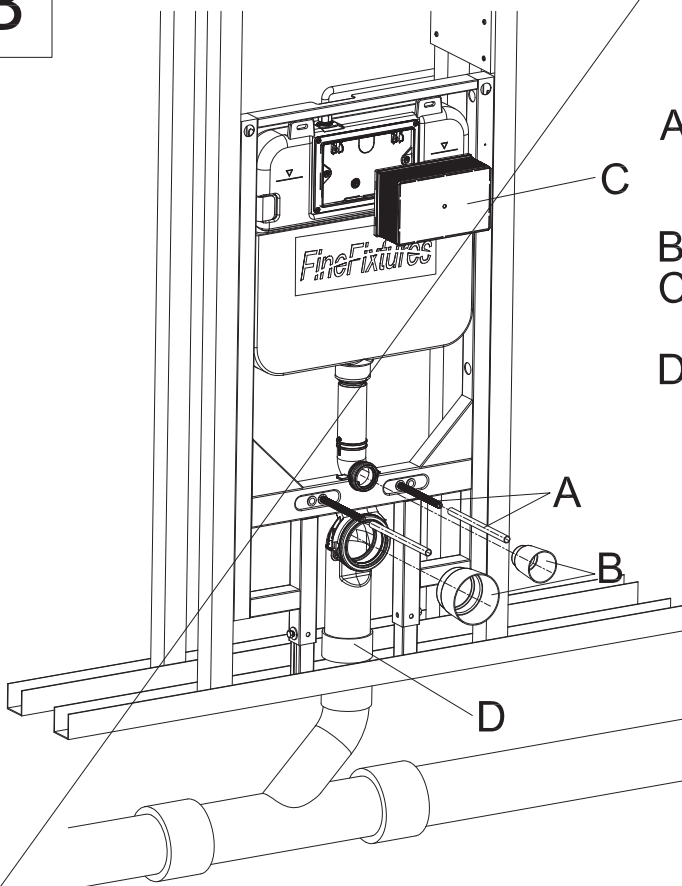


A Install M12 rods with plastic sleeves, on the inner holes. The rods should be installed at 7" apart.

B Install pipe plugs and
C mud guard during the rough-in installation

D Complete waste elbow connection with 3" DWV shielded coupling(D-provided) to waste pipe.

B



A Install M12 rods with plastic sleeves, on the inner holes. The rods should be installed at 7" apart.

B Install pipe plugs and
C mud guard during the rough-in installation

D Complete waste elbow connection with 3" DWV shielded coupling(D-provided) to waste pipe.

Mounting of ceramic bowl

