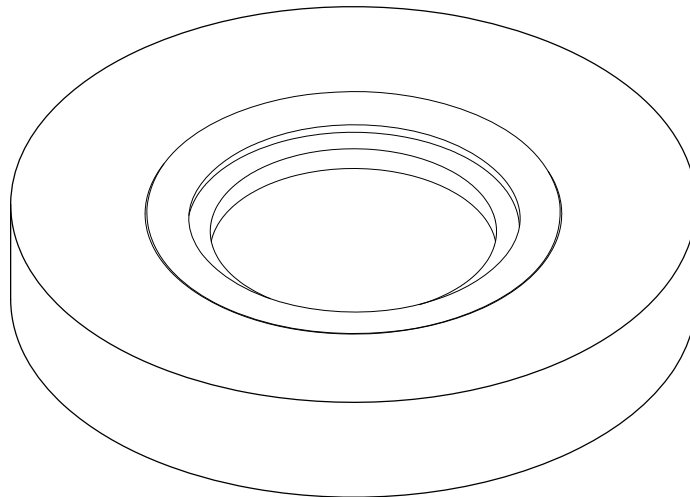


**Instructions:**

1. Add a small bead of silicon based caulking to the underside of the mounting ring.
2. Place mounting ring over the drain opening of the countertop.
3. Place vessel sink on top of the mounting ring.
4. Insert the lavatory drain and secure from the bottom.
5. Clean any excess caulking.



[www.kingstonbrass.com](http://www.kingstonbrass.com)

TOLL-FREE CUSTOMER SERVICE: 1-877-2-KBRASS  
TECHNICAL SUPPORT E-mail: [service@kingstonbrass.com](mailto:service@kingstonbrass.com)  
12775 Reservoir Street, Chino, CA 91710