



Liberty Furniture
INDUSTRIES, INC

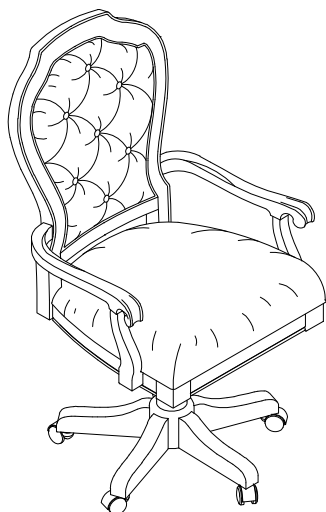
ASSEMBLY INSTRUCTION

ITEM# **244 - HO197**

DESCRIPTION: **JR EXECUTIVE DESK CHAIR**

Thank you for purchasing this quality product. Be sure to check all packing material carefully for small parts which may have come loose inside the carton during shipment. Identify and count all parts and compare with the parts List Below:

PART LIST:



①	②	③	④
SEAT TOP: 1PC	FRAME BASE: 1PC	LEFT ARM: 1PC	RIGHT ARM: 1PC

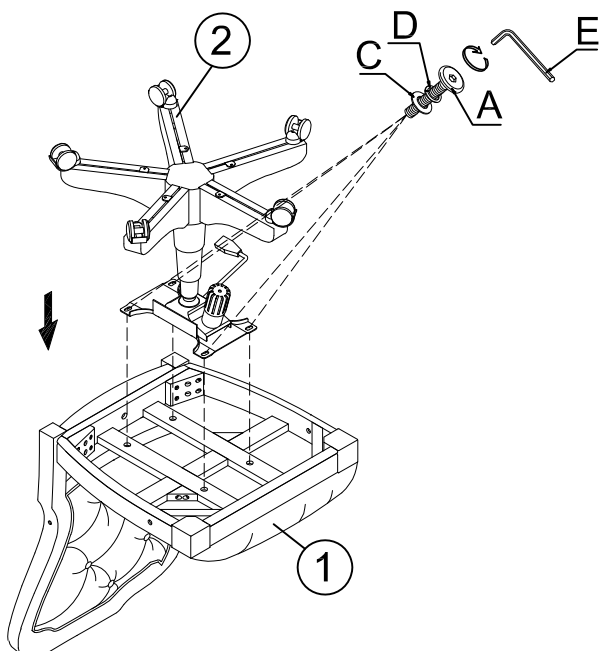
Note:

1. Remove Arm from inner box.

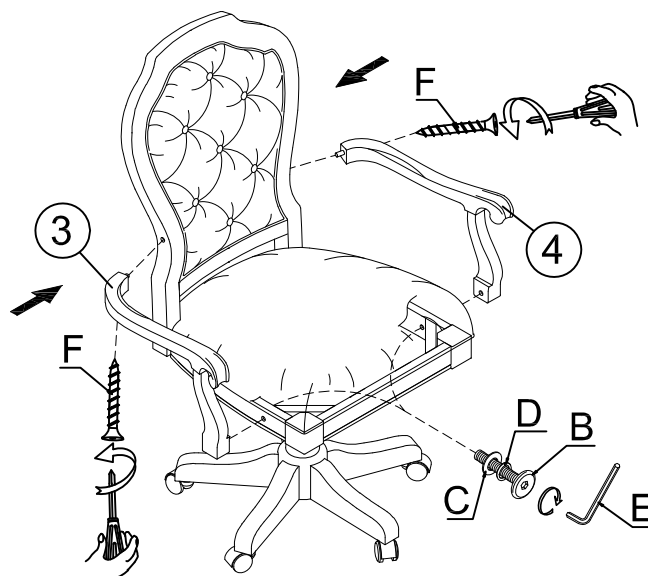
HARDWARE LIST

NO.	Drawing	Description	Q'ty
A		Bolt (Φ5/16"×3/4")	4pcs
B		Bolt (Φ5/16" × 1-3/4")	2pcs
C		Flat washer (Ø5/16"×19mm)	6pcs
D		Spring washer (Ø5/16")	6pcs
E		Allen wrench (5mm)	1pc
F		Screw (Φ8x1-1/2")	2pcs

STEP 1



STEP 2



CLEANING INSTRUCTION

Clean the Jr Executive Desk Chair surface with a furniture polish and a soft cloth.