



**Liberty Furniture**  
INDUSTRIES, INC

# LIBERTY FURNITURE

## ASSEMBLY INSTRUCTION

ITEM # : 661W-CH5468


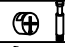



DESCRIPTION : DISPLAY CABINET

Thank you for purchasing this quality product. Be sure to check all packing material carefully for small parts which may have come loose inside the carton during shipment. Identify and count all **7** parts and compare with the parts list below :

661W-CH5468 : Component List

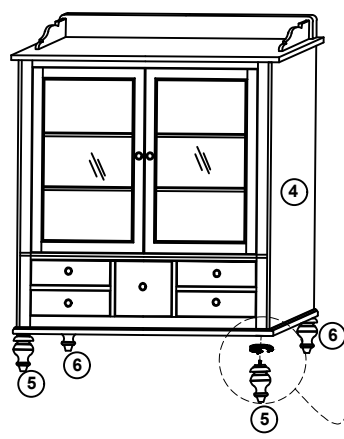
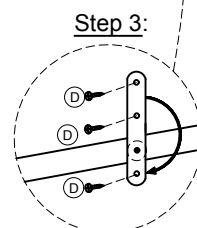
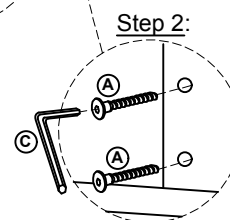
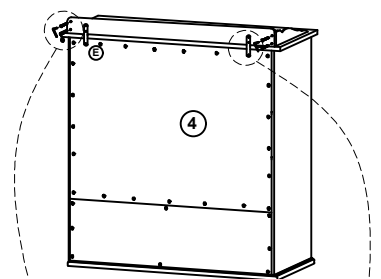
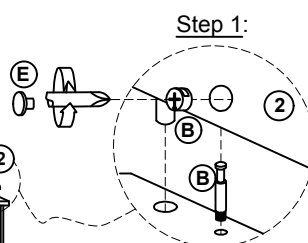
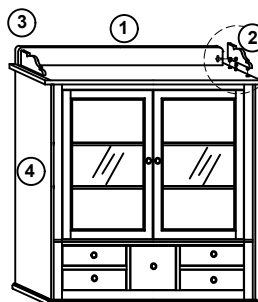
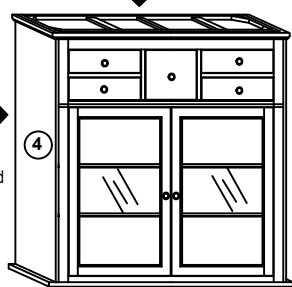
NO	Descriptions	Qty
1	Back Moulding	1
2	Side Moulding (R)	1
3	Side Moulding (L)	1
4	Display Cabinet	1
5	Front Leg (W.Base Glide)	2
6	Back Leg (W.Nail Leg)	2

7. Assembly Hardware Pack

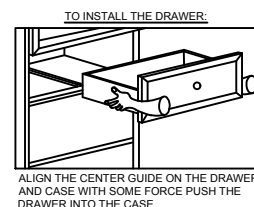
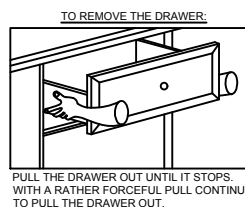
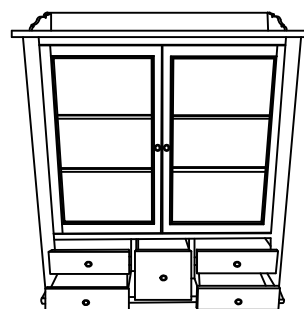
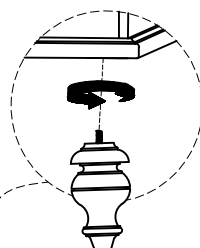
NO	Descriptions		Qty
A	JCBC Screw $\frac{1}{4}$ " x 40mm		4
B	Mini Fix L-163		2 SET
C	Allen Key		1
D	CSKCB Screw M4 x 16mm		6
E	Plug		2

Shelf Glass under the bottom panel .  
Pls take it out and assembly it .

Front & Side  
Moulding beside  
the side panel .  
Pls take it out and  
assembly it .



Step 4:



### ASSEMBLY TIPS:

1. Remove hardware from box and sort by size.
2. Please check to see that all hardware and parts are present prior start of assembly.
3. Please follow attached instructions in the same sequence as numbered to assure fast and easy assembly.

### ⚠ WARNING !

1. Don't attempt to repair or modify parts that are broken or defective. Please contact the store immediately.
2. This product is for home use only and not intended for commercial establishments.