



Liberty Furniture
INDUSTRIES, INC

LIBERTY FURNITURE

ASSEMBLY INSTRUCTION

ITEM # : 661W-T4294
: 661W-P4294

DESCRIPTION : TRESTLE TABLE

Thank you for purchasing this quality product. Be sure to check all packing material carefully for small parts which may have come loose inside the carton during shipment. Identify and count all [6] parts and compare with the parts list below :

661W-T&P4294 : Component List

NO	Descriptions	Qty
1	Table top	1
2	Center Leaf	1
3	Base Plate	2
4	Padestal	2
5	Bottom Rail	1

6. Assembly Hardware Pack

NO	Descriptions	Qty
A	Flat Washer $\frac{5}{16}$ " x 22mm	18
B	Spring Washer $\frac{5}{16}$ "	18
C	Hexagon Nut $\frac{5}{16}$ " x 7mm	8
D	Spanner	1
E	JCBC Bolt M8 x 95mm	8
F	Allen Cap Screw M8 x 150mm	2
G	Allen Key M5	1
H	Allen Key M6	1
I	Table Cover	2
J	CSKCB Screw M3.5 x 16mm	2

Step 1 :

Push down to
unlock glide.

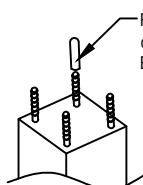


Step 2 :

Unlock the Cam Lock under
the table before Center Leaf
assembled then lock it.

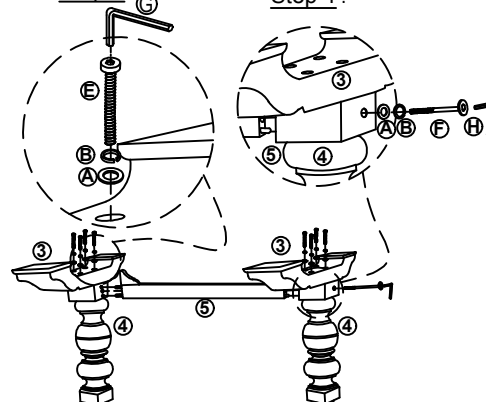


Remove the plastic
cover from the
Bolts.

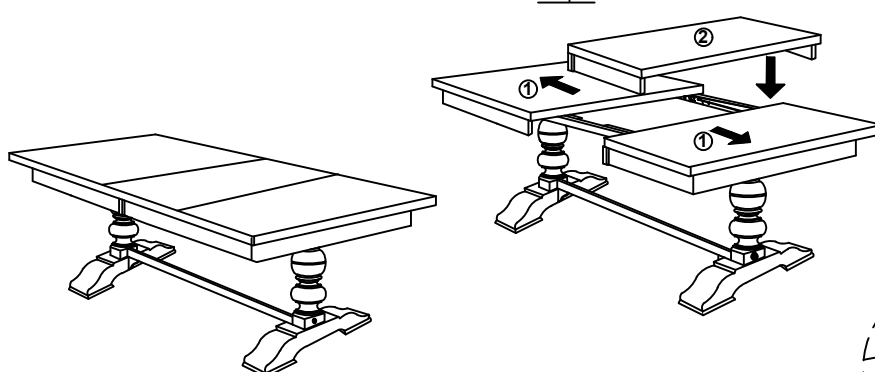


Step 3 :

Step 4 :



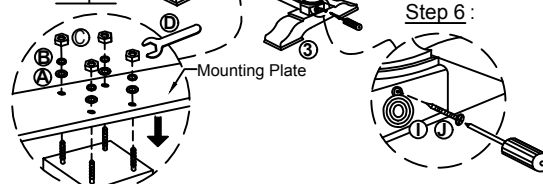
Step 7 :



Assembly Completed !!!

Step 5 :

Step 6 :



ASSEMBLY TIPS:

1. Remove hardware from box and sort by size.
2. Please check to see that all hardware and parts are present prior start of assembly.
3. Please follow attached instructions in the same sequence as numbered to assure fast and easy assembly.

⚠ WARNING !

1. Don't attempt to repair or modify parts that are broken or defective. Please contact the store immediately.
2. This product is for home use only and not intended for commercial establishments.