

Installation Instructions

12in. Deep Simplicity Closet Organizer

MODEL: JLH-530, JLH-531



www.johnlouishome.com

IMPORTANT: DO NOT RETURN TO STORE!

For missing or damaged parts, technical or assembly questions,
please call John Louis Customer Service at **1-800-480-6985**

IMPORTANTE: ¡NO LO DEVUELVA A LA TIENDA!

Llame al servicio al cliente local de John Louis al **1-800-480-6985**
para aclarar sus dudas sobre pérdidas, daños, asuntos técnicos y ensamblaje.

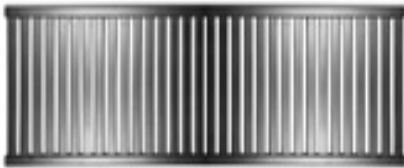
IMPORTANT: NE PAS RENVoyer OU RAPPORTER AU MAGASIN!

Si vous avez une question concernant l'assemblage, des pièces manquantes ou endommagées ou
un problème technique, appelez le Service à la clientèle de John Louis au **1-800-480-6985**.

PARTS LIST

Lista De Piezas

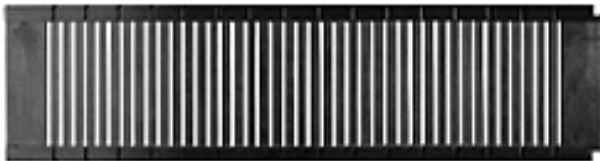
Liste Des Pièces



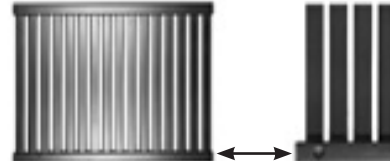
Quantity: 2 48 in. Shelf



Quantity: 4 24 in. Adjustable Shelf



Quantity: 2 72 in. Tower Side



Quantity: 1 24 in. Cam Shelf



Quantity: 1 26 in. Shelf



Quantity: 1 24 in. Wardrobe Bar



Quantity: 2 48 in. Wardrobe Bar



Quantity: 1 Allen wrench



Quantity: 8
Bar Spacer



Quantity: 6
Tower Bracket



Quantity: 6
Shelf End



Quantity: 14
Shelf mounting L- Clip



Quantity: 4 Mushroom Cap



Quantity: 20 Adjustable Shelf Pin



Quantity: 4 Barrel Bolt



Quantity: 4 Barrel Nut



Quantity: 44 #8 1 1/2 in.



Quantity: 16
#8 1 in.



Quantity: 12
#8 3/4 in.



Quantity: 18
#4 3/4 in.



Quantity: 4
#8 1/2 in.



Quantity: 4 Cam Bolt



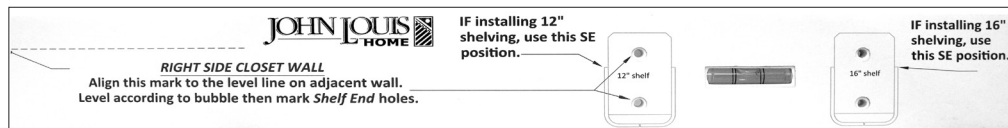
Quantity: 4
Cam Lock Nut



Quantity: 48 Wall Anchor



Quantity: 1 Touch Up Stain Pen



Quantity: 1
Shelf End Template

Contact Contact0 Contacter

For questions concerning missing or damaged parts, technical specs and / or assembly help, please contact John Louis Home Customer Service at:

Si tiene preguntas sobre partes faltantes o dañadas, especificaciones técnicas o asistencia para el armado, comuníquese con el Servicio al Cliente de John Louis Home:

Pour toute question relative à des pièces manquantes ou endommagées, toute spécification technique et/ou aide au montage, contactez le service après-vente de John Louis Home au :



1.800.480.6985 service@johnlouishome.com www.johnlouishome.com

John Louis Home 4310 Rider Trail North Earth City, Missouri 63045 USA

© 2012 John Louis Inc., All Rights Reserved.

IMPORTANT - Read Before Assembly

Assembly instructions are written for 8 ft. configuration A. All assembly processes are the same for each configuration EXCEPT for the order or locations of the assembly process. Use selected configuration for shelf locations.

Shelf lengths and Garment bars may need to be cut depending upon configuration desired.

All cut shelf lengths are used in closet configurations supplied. Depending upon your closet dimensions, some cut lengths may not be usable.

EXAMPLE: If you choose an 6 ft. closet configuration and the width of your closet is 6 ft. 4 in., the cut shelf length will be short 4 in. for use. It is recommended that if your closet is over the selected dimension (6 ft.), then choose a configuration from the next dimension higher (8 ft.).

EXAMPLE: If you choose an 8 ft. closet configuration and the width of your closet is 7 ft. 6 in., some shelf lengths may need to be cut 6 in. shorter in length to fit closet dimensions.

VERIFY SHELF MEASUREMENTS MEASURE - MARK - MEASURE AGAIN

Chosen configuration may not require use of all hardware or components supplied.

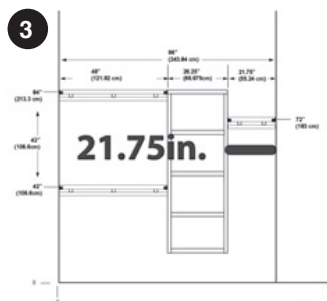
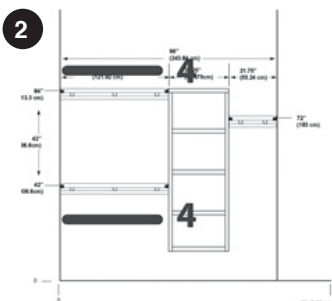
It is recommended to secure hardware into wall studs for overall strength and stability of closet system.

If choosing a custom designed configuration, modifications to the instructions provided will be necessary.

All configurations provided may be reversed.

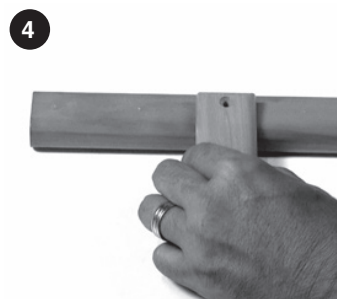
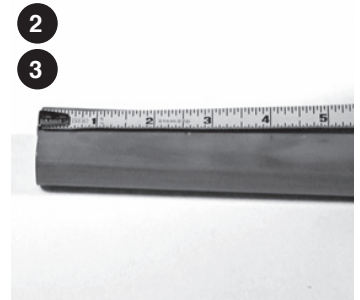
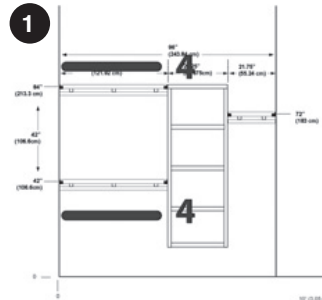
STEP 1 - Determining Your Dimensions

1. Locate your desired configuration (Instructions are written for 8 ft. configuration A).
2. Double hang shelf is created with 2 - 4 ft. shelf lengths.
3. Long hang is created by cutting a 2 ft. shelf to 21 3/4 in. wide. (Cut may be adjusted for any width under 2 ft.)

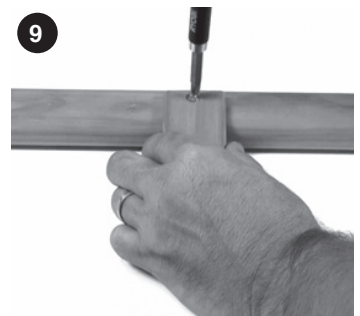
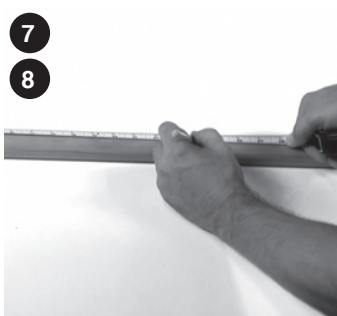


STEP 2 - Attaching Garment Bars

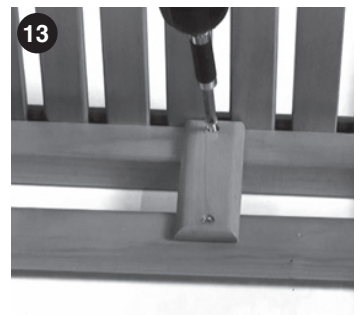
1. 4 ft. garment bars are used for double hang.
2. On the pilot hole side of the bar, measure in 4 in. from the end.
3. Mark location & repeat for other end.
4. Align side of bar spacer with the mark.
5. Secure with #8 1 in. screw.
6. Repeat at each marked location.



7. Find bar center & mark location.
8. Align center of bar spacer at marked location.
9. Secure with #8 1 in. screw.
10. Repeat for 2nd 4 ft. bar.

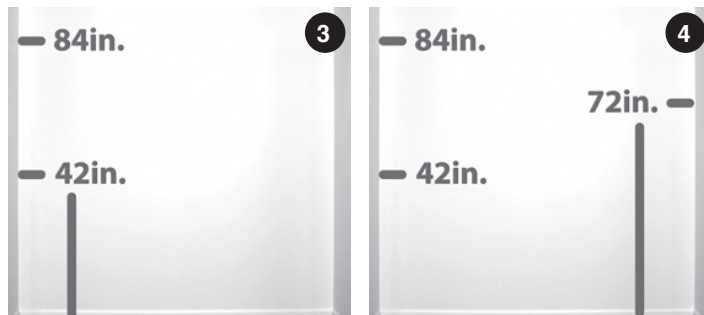
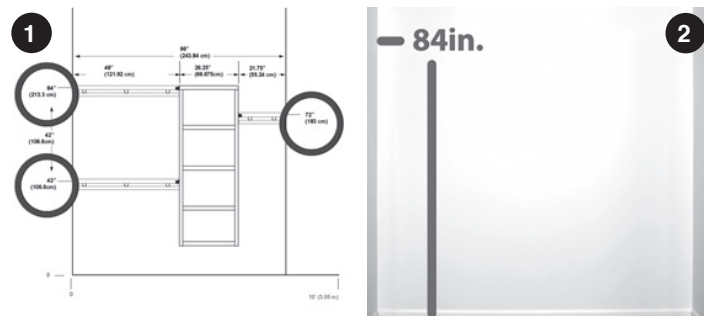


11. Place notched bar spacer / bar tight on inside rail of shelf.
12. Flush bar & shelf.
13. Secure bar spacer to shelf rail with #8 1 in. screw.
14. Repeat at each bar spacer location.
15. Repeat for each bar & shelf.

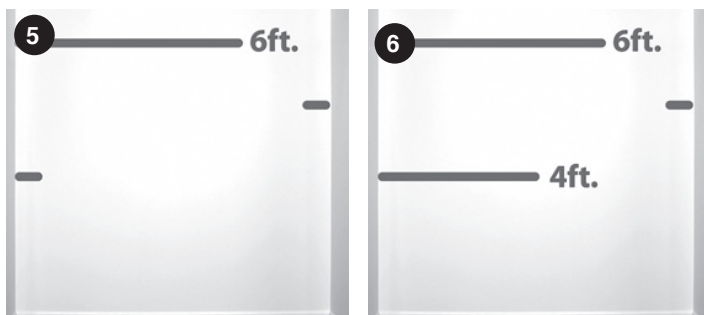


STEP 3 - Marking Measurements

1. Locate the 3 main height locations for your configuration.
2. Measure up & mark the 84 in. shelf location.
3. Mark the 42 in. shelf location.
4. Mark the 72 in. shelf location.

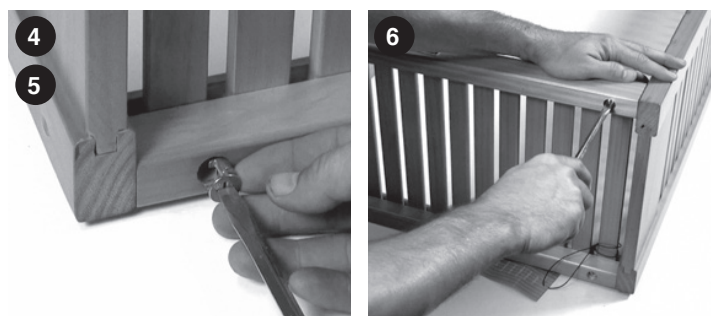
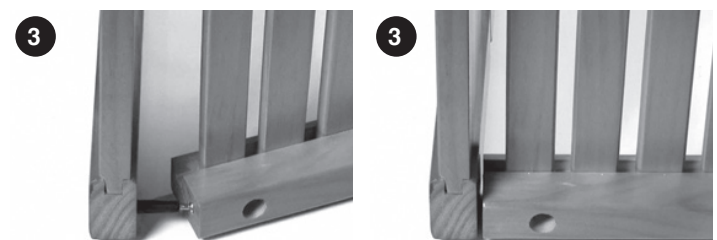
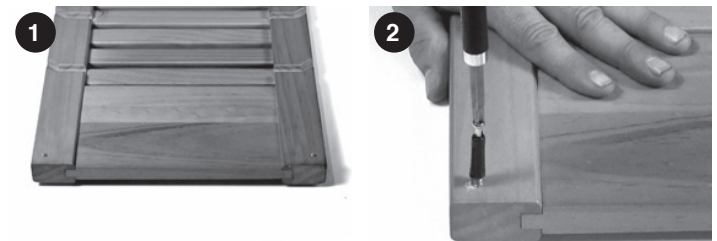


5. Draw a 6 ft. long level line out from wall end at 84 in. location.
6. Draw a 4 ft. long level line out from wall end at 42 in. location.
7. Draw a 22 in. long level line out from wall end at 72 in. location.
8. Locate stud locations at level lines.

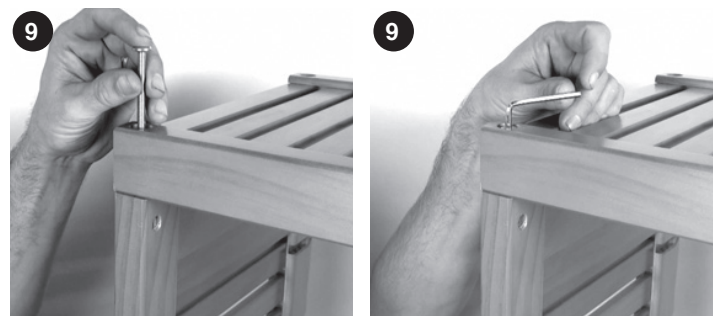
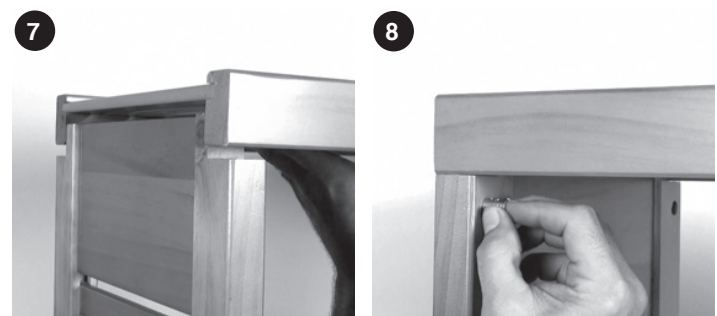


STEP 4 - Tower Assembly

1. Place tower sides down with grooves facing up.
2. Insert cam bolts at tower bottom hole locations.
3. Insert tower sides into tower bottom.
4. Insert cam nuts into tower bottom shelf with arrow facing bolt hole.
5. Secure by turning cam nuts clockwise to tighten.
6. Repeat for opposite tower side.

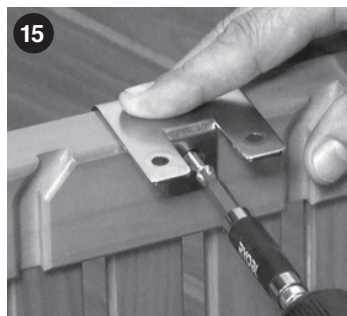


7. Place tower top into notches at top of tower.
8. Insert barrel nuts into tower sides with groove facing tower top.
9. Insert barrel bolts into tower top & tighten with allen wrench provided (nut position may need adjustment).

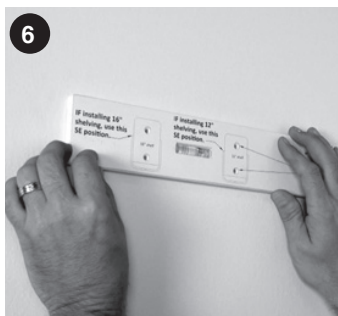
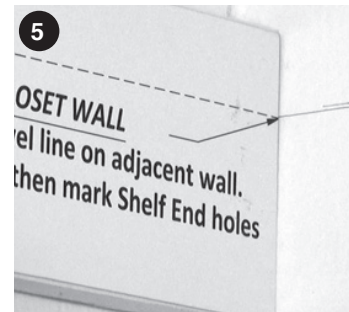
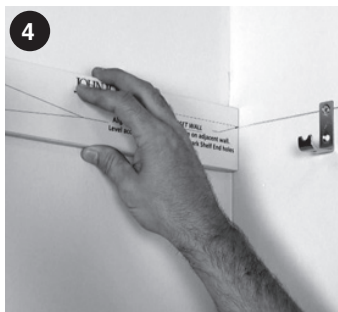


10. Place tower face down (nameplate typically designates tower front)
11. Place top tower bracket between 1st & 2nd groove.
12. Place middle tower bracket between 8th & 9th groove.
13. Place bottom tower bracket between last groove & tower bottom.

14. Repeat for opposite side.
15. Secure brackets to tower using #6 3/4 in. screws.



4. Position shelf end template onto side wall.
5. Align template line with adjacent wall line.
6. Level template.
7. Mark required Shelf End position for required depth (12in. or 16in. depth).
8. Secure Shelf End using #8 - 1 1/2 in. screws (use wall anchor if no stud is present).



STEP 5 - Installing Top Shelf & Tower

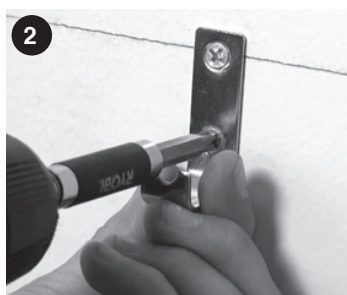
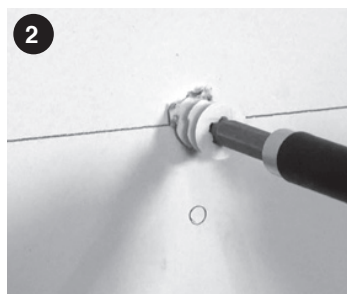
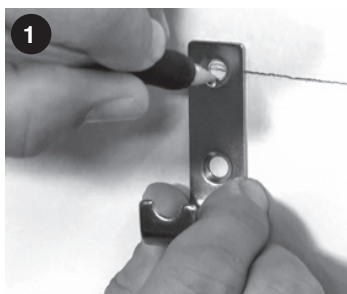
It is recommended to install hardware into wall studs. Typically 16 in. on center. Use 50 lb. wall anchors provided if no stud is present.

On the top level line space shelf mounting L-clip hardware equidistant in the following manner:

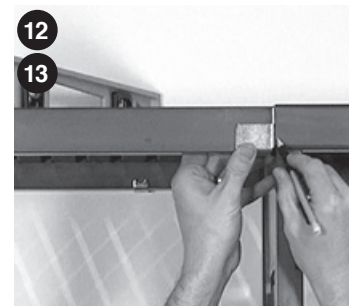
- 3 L-clip hardware within the 48 in. shelf location
- 2 L-clip hardware within the tower top location

NOTE: AT LEAST 1 L-CLIP HARDWARE MUST BE INSTALLED INTO A WALL STUD AT TOWER TOP LOCATION

1. Center the top screw hole of the shelf mounting L-clip hardware with the level line & mark all hole locations.
2. Secure L-clip to wall using #8 1 1/2 in. screws at hole locations (Use wall anchors provided if no stud is present).
3. Repeat for remaining L-clip locations.



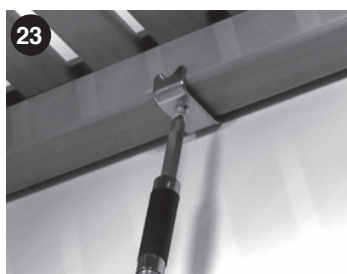
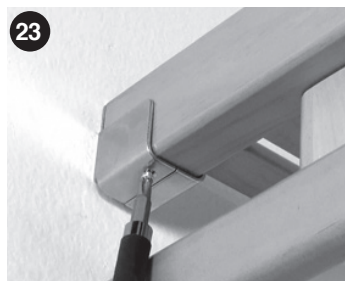
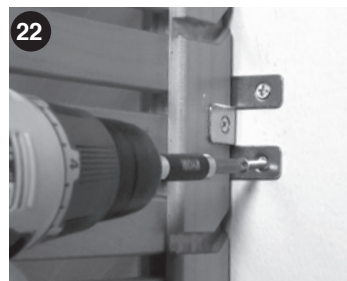
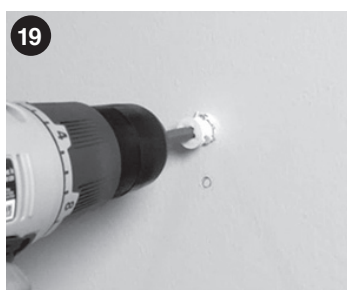
9. Place shelf onto hardware.
10. Place tower onto hardware.
11. Place a shelf end onto the tower of the shelf at tower end.
12. Flush tower with top shelf by moving tower left or right.
13. Level shelf front to back & mark shelf end hardware location on tower.



14. Plumb level tower side.
15. Mark tower bracket hole locations on wall.
16. Remove shelf and tower.
17. Align shelf end hardware with the mark on the tower & mark screw hole locations.
18. Secure shelf end to tower top using #8 1/2in. screws at hole locations.
NOTE: If shelf is mounted level with the tower top, the shelf end hardware should be "centered" on the end of the front rail of the tower top.



19. Install wall anchors at tower bracket locations if no stud is present.
20. Place tower onto wall and align with hole locations.
21. Place shelf onto wall hardware.
22. Secure tower to wall using #8 1 1/2in. screws at all bracket locations.
23. Secure shelf to hardware using #4 3/4 in. screws at all hardware locations

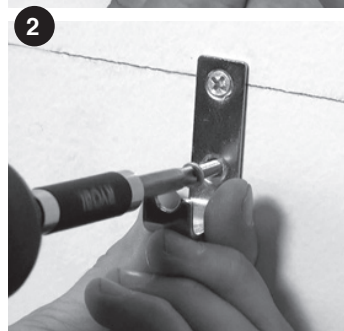
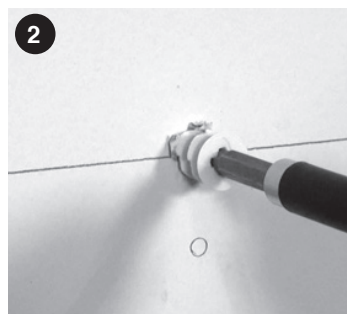
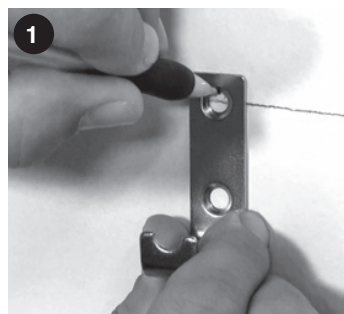


STEP 6 - Installing Lower Shelf

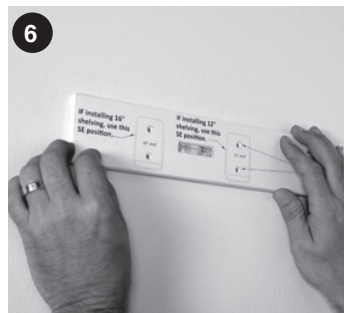
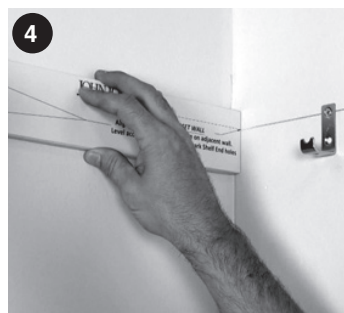
On the lower level line space shelf mounting L-clip hardware equidistant in the following manner:

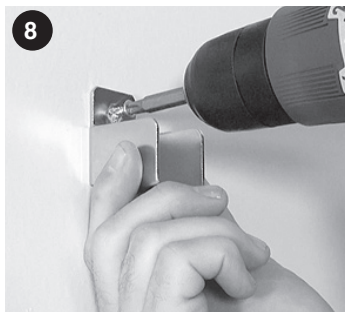
- 3 L-clip hardware within the 48in. shelf location

1. Center the top screw hole of the shelf mounting L-clip hardware with the level line & mark all hole locations.
2. Secure L-clip to wall using #8 1 1/2 in. screws at hole locations (Use wall anchors provided if no stud is present).
3. Repeat for remaining L-clip locations.



4. Position shelf end template onto side wall.
5. Align template line with adjacent wall line.
6. Level template.
7. Mark required Shelf End position for required depth (12in. or 16in. depth).
8. Secure Shelf End using #8 - 1 1/2in. screws (use wall anchor if no stud is present).



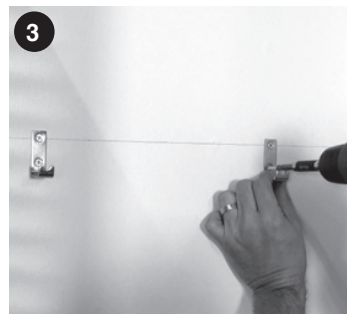
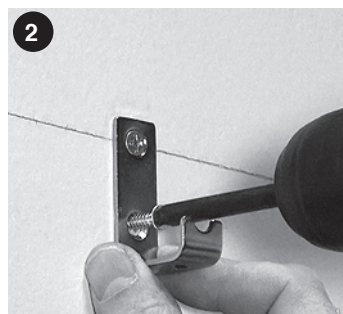
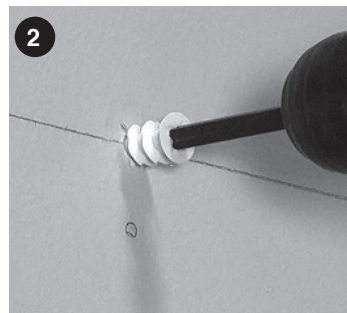
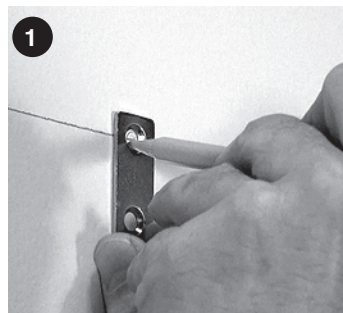


STEP 7 - Installing Long Hang Shelf

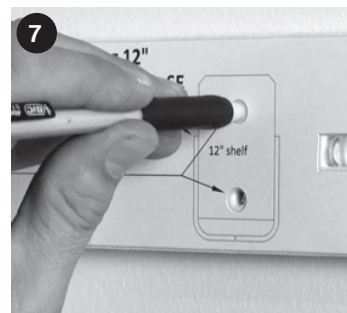
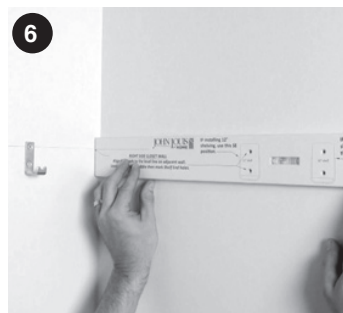
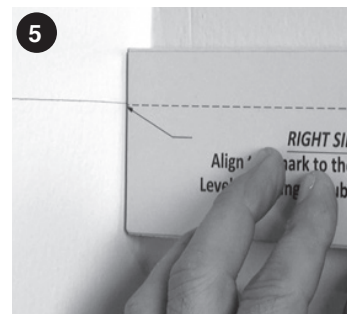
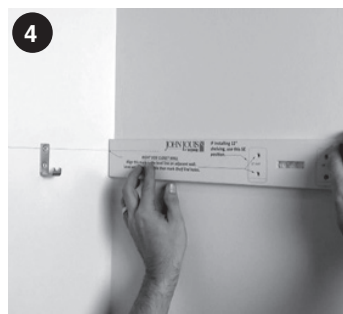
On the 72in. level line space shelf mounting L-clip hardware equidistant in the following manner:

- 2 L-clip hardware within the 24in. shelf location

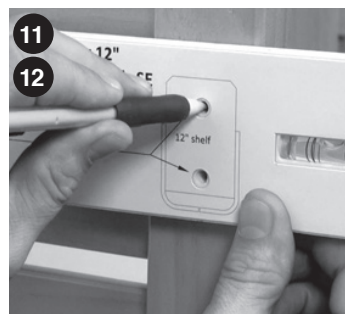
1. Center the top screw hole of the shelf mounting L-clip hardware with the level line & mark all hole locations.
2. Secure L-clip to wall using #8 1 1/2 in. screws at hole locations (Use wall anchors provided if no stud is present).
3. Repeat for remaining L-clip locations.



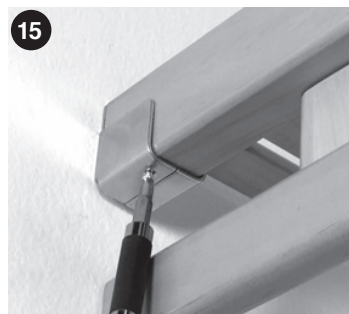
4. Position shelf end template onto side wall.
5. Align template line with adjacent wall line.
6. Level template.
7. Mark required Shelf End position for required depth (12in. or 16in. depth).
8. Secure Shelf End using #8 - 1 1/2in. screws (use wall anchor if no stud is present).

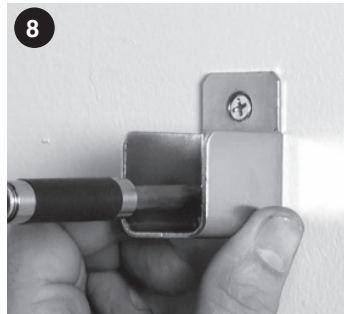
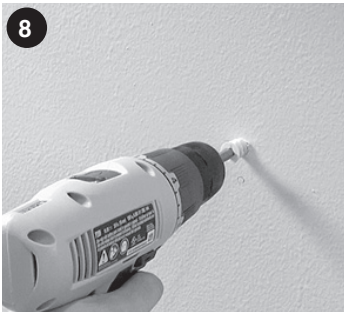


9. Position shelf end template onto tower side.
10. Align template line with adjacent wall line.
11. Level template.
12. Mark required Shelf End position for required depth (12in. or 16in. depth).
13. Secure using #8 - 3/4in. screws.

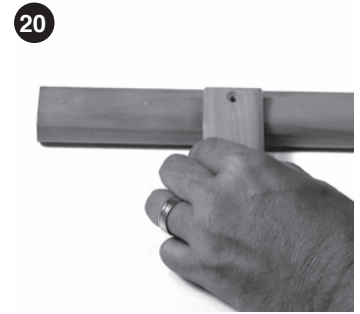
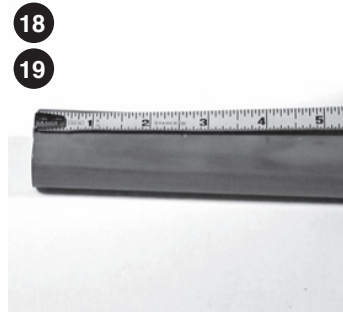


14. Place shelf into shelf end hardware & onto L-clip hardware.
15. Secure shelf to hardware using #4 3/4 in. screws at all hardware locations.

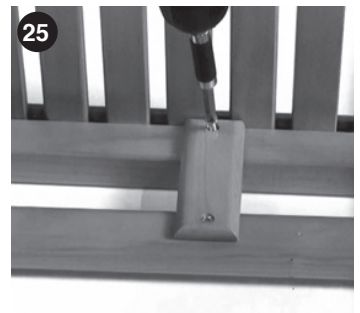




18. On the pilot hole side of the bar, measure in 4 in. from the end.
19. Mark location & repeat for other end.
20. Align side of bar spacer with the mark.
21. Secure with #8 1 in. screw.
22. Repeat at each marked location.



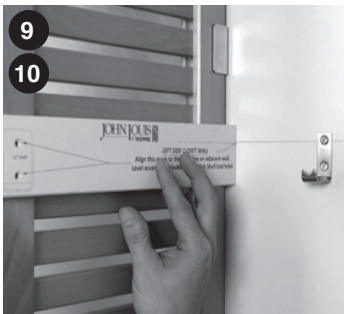
23. Place notched bar spacer / bar tight on inside rail of shelf.
24. Flush bar & shelf.
25. Secure bar spacer to shelf rail with #8 1 in. screw.
26. Repeat at each bar spacer location.



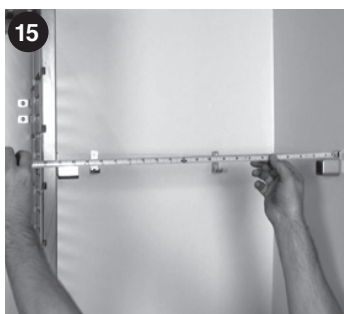
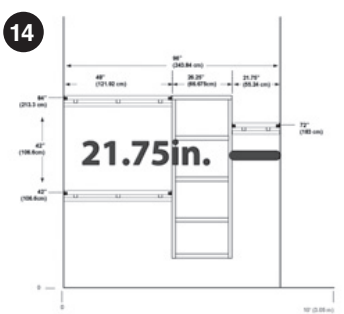
27. Place shelf into shelf end hardware & onto L-clip hardware.
28. Secure shelf to hardware using #4 3/4 in. screws at all hardware locations.



9. Position shelf end template onto tower side.
10. Align template line with adjacent wall line.
11. Level template.
12. Mark required Shelf End position for required depth (12in. or 16in. depth).
13. Secure using #8 - 3/4in. screws.

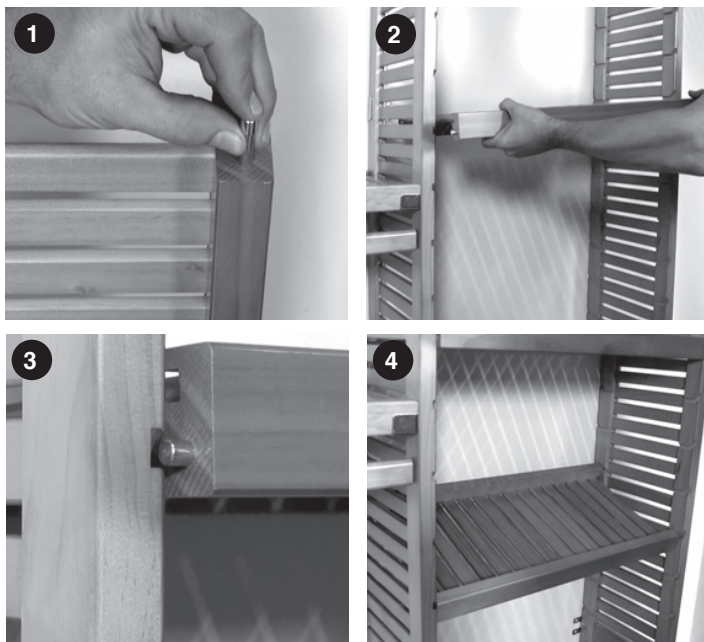


14. The long hang is created by cutting the 24 in. shelf & bar to 21 3/4 in. wide.
15. Double check required shelf measurement.
16. Cut Shelf to required width.
17. Cut bar to required width.



STEP 8 - Installing Adjustable Shelves

1. Select 24 in. adjustable shelf & insert shelf pins into shelf ends.
2. Adjustable shelves may be placed anywhere within the tower.
3. Place the shelf into the tower by inserting the pins into the tower grooves.
4. Create a shoe shelf by inserting the shelf upside down with the back one groove higher than the front.



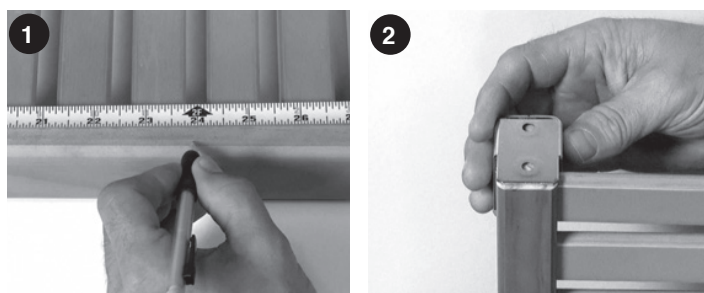
Creating Adjustable Shelves

Put your excess cuts back into your closet. Any material greater than 24 in. wide can be used as an additional shelf.

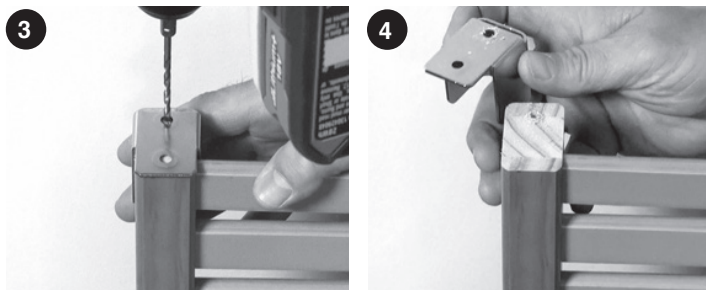
Cut excess lengths to 24 in. wide to use as tower shelves & place where ever you choose.



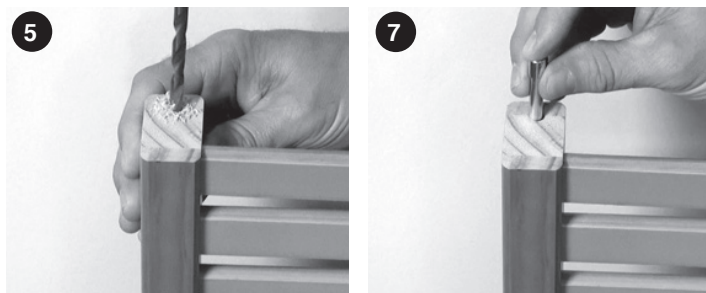
1. Measure required dimension, mark & cut shelf (if necessary).
2. Place shelf end bracket onto shelf.



3. Using the lower hole location on the bracket, drill a pilot hole using a 1/8 in. drill bit.
4. Remove the shelf end bracket.

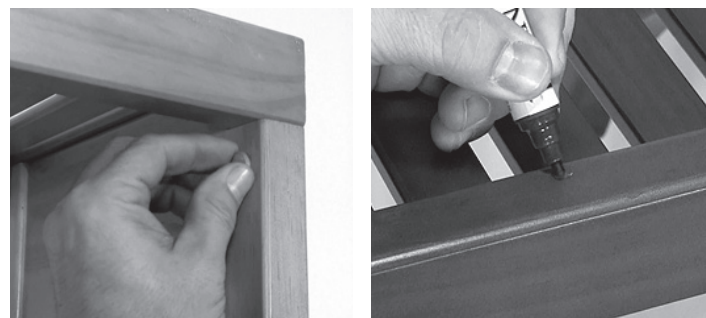


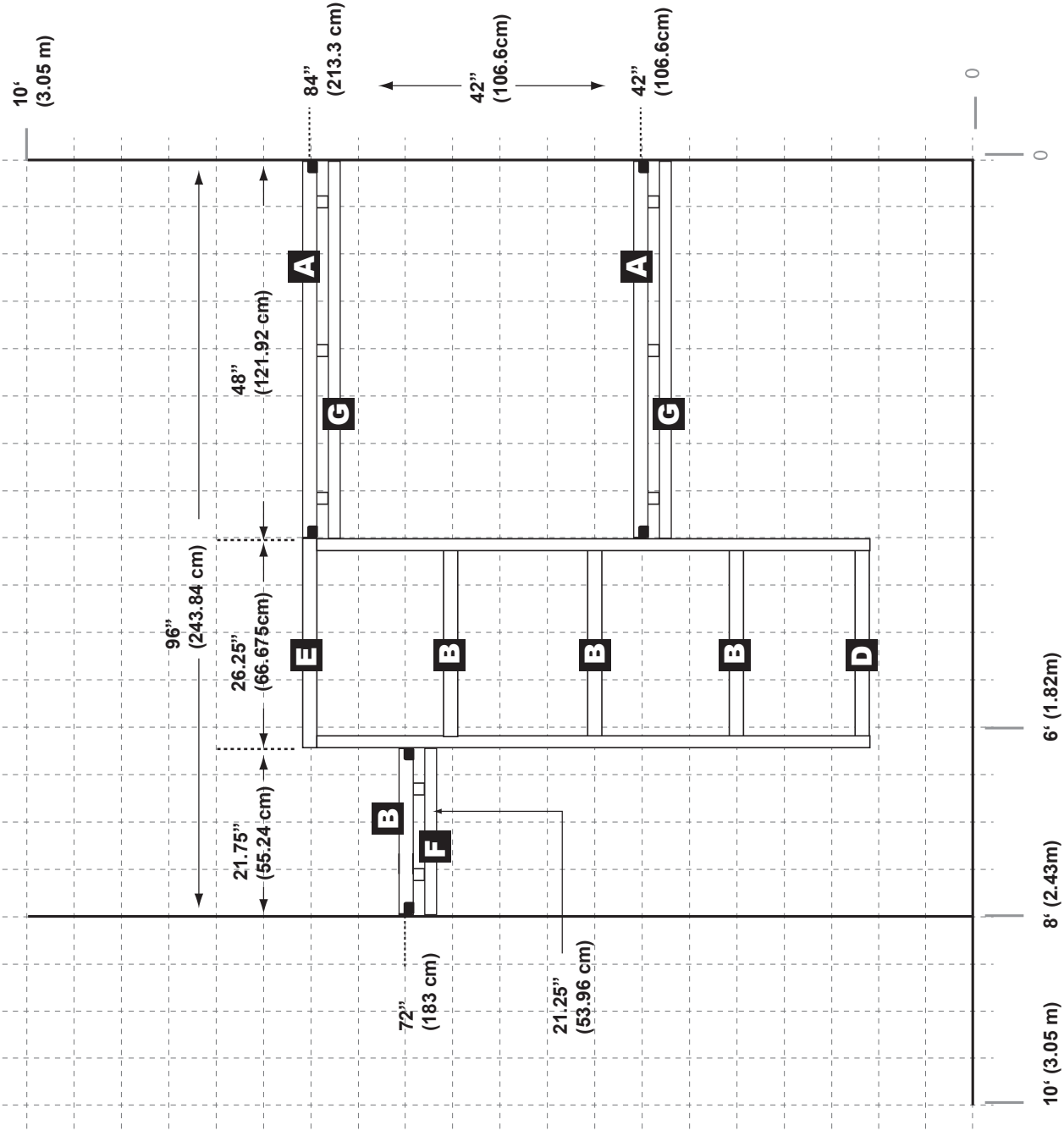
5. Re-drill hole 1 - 1 1/4 in. deep using a 1/4 in. drill bit.
6. Repeat steps for each shelf end.
7. Insert shelf pin into holes at each end.



STEP 9 - Final Touches

1. Insert mushroom caps into barrel nut holes on tower.
2. Touch up scratches & cut ends with stain pen provided.





CONFIGURATION NOTES:

- Requires cutting of B shelf.
- Design can be reversed.
- 72" Long hang shelf can be placed at any height.

10' (3.05 m)

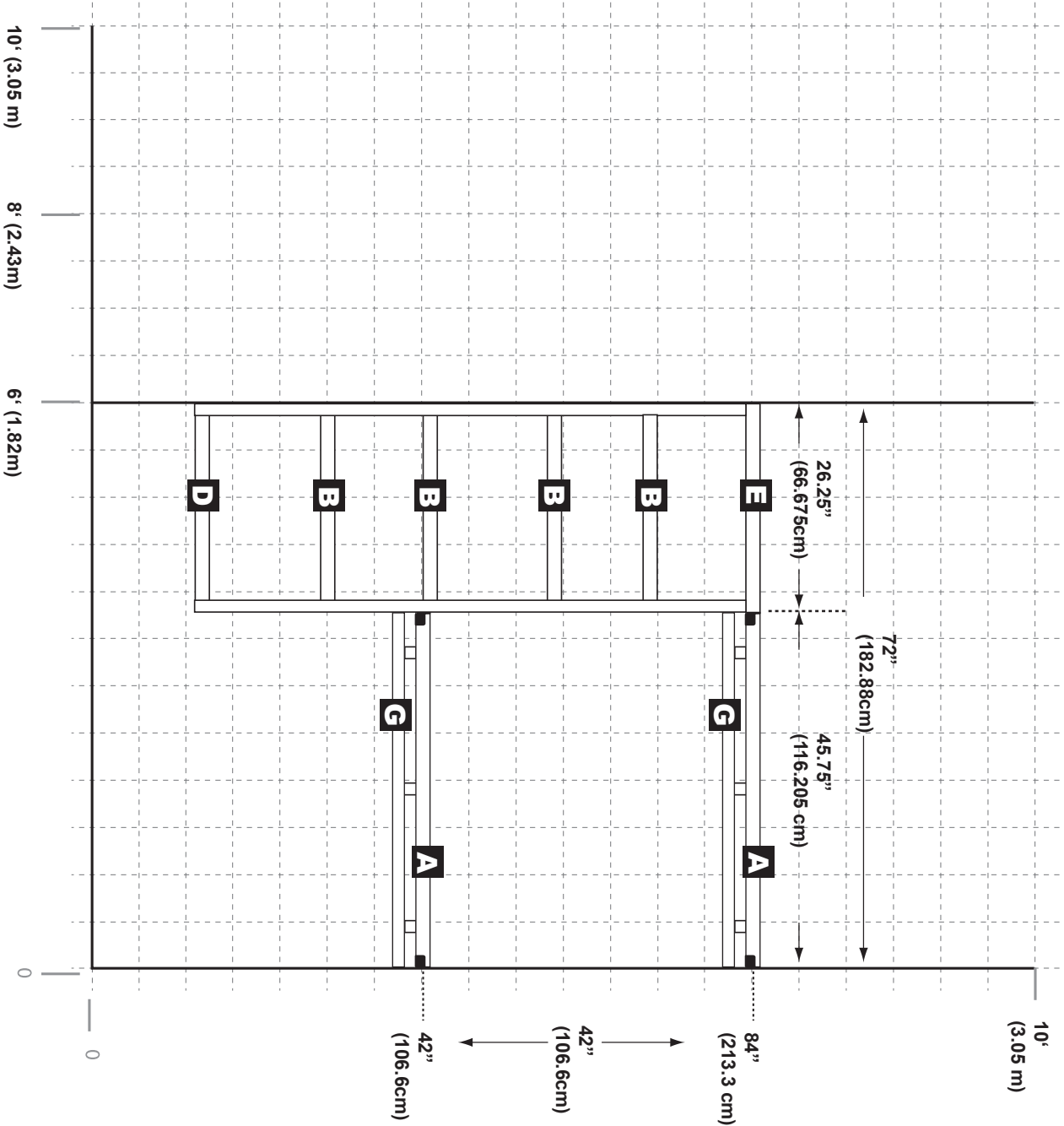
- 10' (3.05 m)



 = 6" (15.2cm)

CONFIGURATION NOTES:

- Requires cutting of A shelf.
- Requires drilling of B shelf for use as adjustable shelf.
- Design can be reversed.



6' CLOSET CONFIGURATION C • C CONFIGURACION DE 1.82M • C CONFIGURATION DE 1.82M

6" = 15.2cm