



**Liberty Furniture**  
INDUSTRIES, INC

## LIBERTY FURNITURE

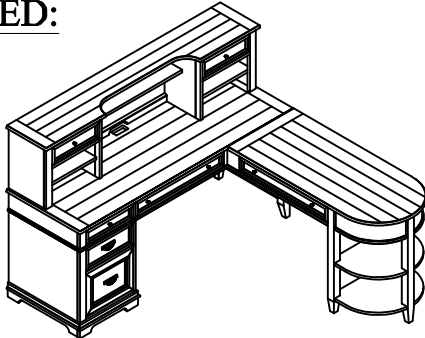
### ASSEMBLY INSTRUCTION

ITEM#: 417-HO140/417-HO111B  
417-HO111T/417-HO121

**DESCRIPTION:** HUTCH/ L WRITING DESK BASE  
L WRITING DESK BASE  
RIGHT RETURN

**Thank you for purchasing this quality product. Be sure to check all packing material carefully for small parts, which may have come loose inside the carton during shipment. Identify and count all parts and compare with the parts list below.**

#### COMPLETED:



#### PARTS LIST

NO	DRAWING	DESCRIPTION	Q'TY
1		Hutch	1
2		L Writing Desk	1

#### HARDWARE LIST 1

NO	DRAWING	DESCRIPTION	Q'TY
A		Bolt Ø1/4"-20*15mm(L)	2
B		Spring Washer Ø1/4"*Ø13mm	2
C		Flat Washer Ø1/4"*Ø19mm	2
D		Allen Key 4mm	1

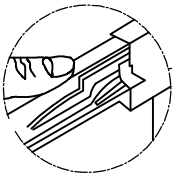
#### HARDWARE LIST 2

NO	DRAWING	DESCRIPTION	Q'TY
E		Tipping Restraint	1

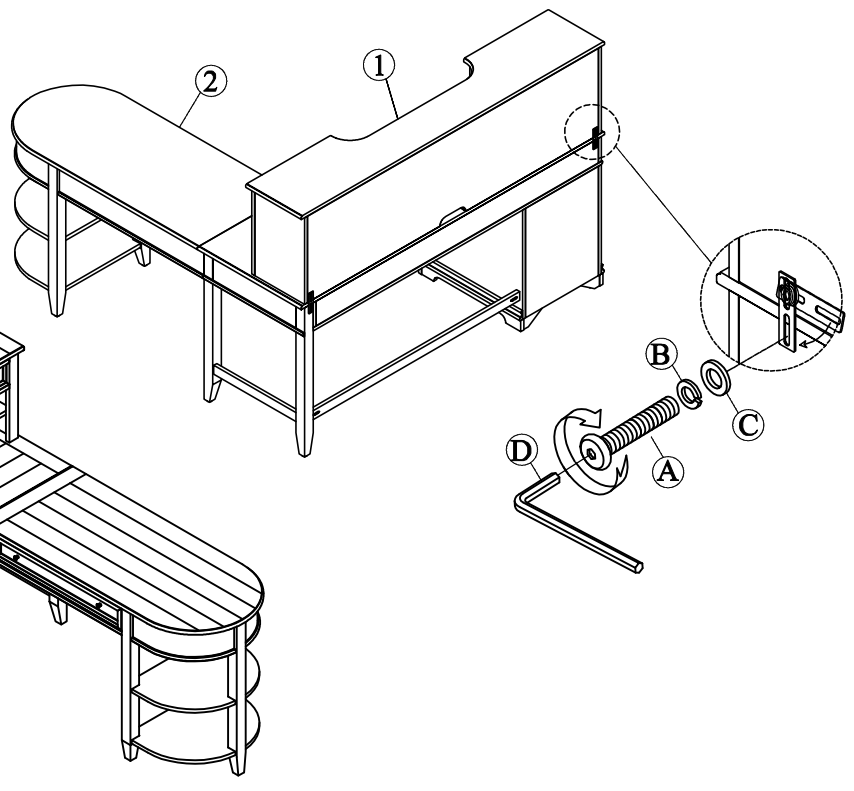
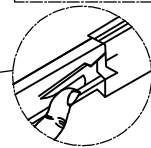
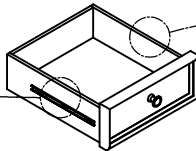
#### HOW TO REMOVE DRAWER

To remove drawer, simultaneously pull tab up on one side and push down on the other and remove drawer.

Push tab up to remove drawer



Push tab down to remove drawer



MADE IN VIETNAM

Page 1