



Liberty Furniture
INDUSTRIES, INC

LIBERTY FURNITURE

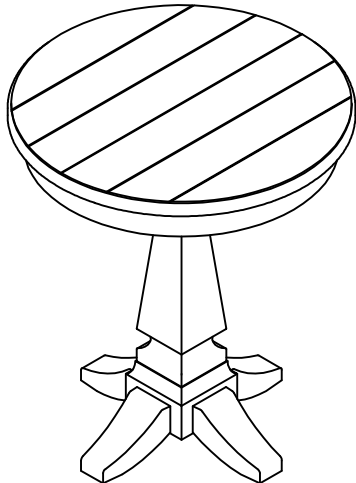
ASSEMBLY INSTRUCTION

ITEM#: 417-OT1021

DESCRIPTION: CHAIR SIDE TABLE

Thank you for purchasing this quality product. Be sure to check all packing material carefully for small parts, which may have come loose inside the carton during shipment. Identify and count all parts and compare with the parts list below.

COMPLETED:



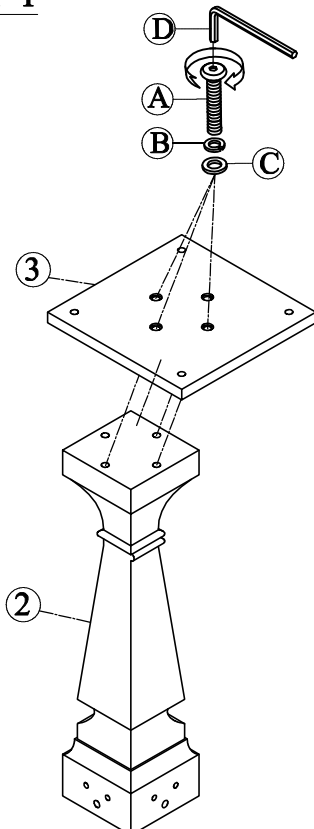
PARTS LIST

NO	DRAWING	DESCRIPTION	Q'TY
1		Table Top	1
2		Pedestal	1
3		Mounting plate	1
4		Leg	4

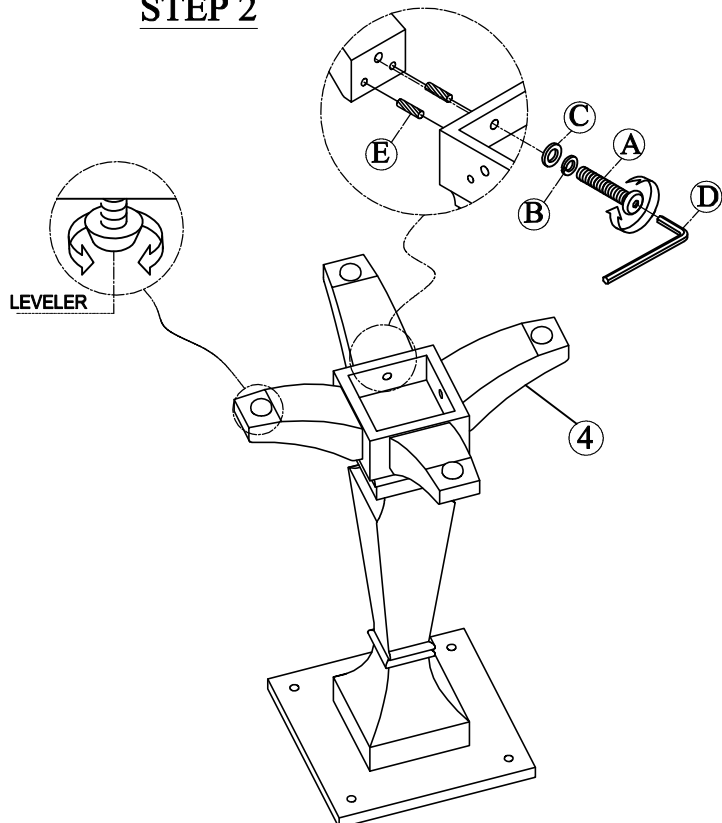
HARDWARE LIST

NO	DRAWING	DESCRIPTION	Q'TY
A		Bolt Ø5/16"-18*38mm(L)	12
B		Spring Washer Ø5/16"*Ø13mm	12
C		Flat Washer Ø5/16"*Ø19mm	12
D		Allen Key 4mm	1
E		Wood Button Ø12*40mm	8

STEP 1



STEP 2



MADE IN VIETNAM

Page 1/2



Liberty Furniture
INDUSTRIES, INC

LIBERTY FURNITURE

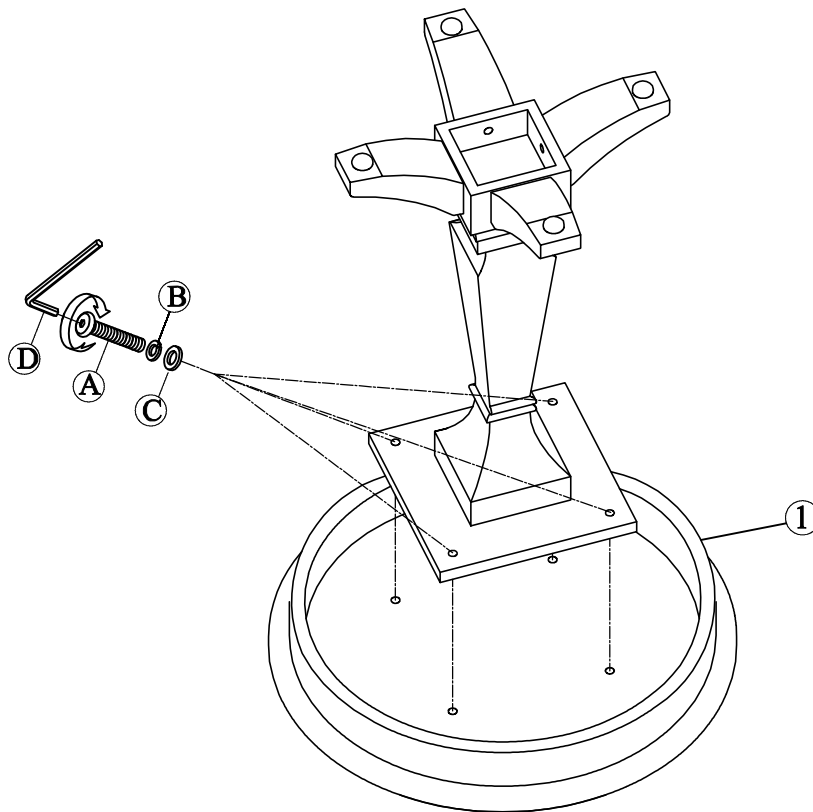
ASSEMBLY INSTRUCTION

ITEM#: 417-OT1021

DESCRIPTION: CHAIR SIDE TABLE

Thank you for purchasing this quality product. Be sure to check all packing material carefully for small parts, which may have come loose inside the carton during shipment. Identify and count all parts and compare with the parts list below.

STEP 3



STEP 4

