



Liberty Furniture
INDUSTRIES, INC

ASSEMBLY INSTRUCTION

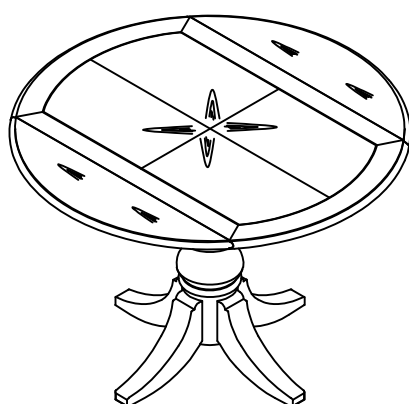
DESCRIPTION: DROP LEAF TABLE

ITEM#: 244 - 244-T4444

Thank you for purchasing this quality product. Be sure to check all packing material carefully for small parts which may have come loose inside the carton during shipment. Identify and count all parts and compare with the parts List Below:

PART LIST:

①	②	③	④
TABLE TOP:1PC	MOUNTING PLATE:1PC	PEDESTAL:1PC	LEGS: 4PCS

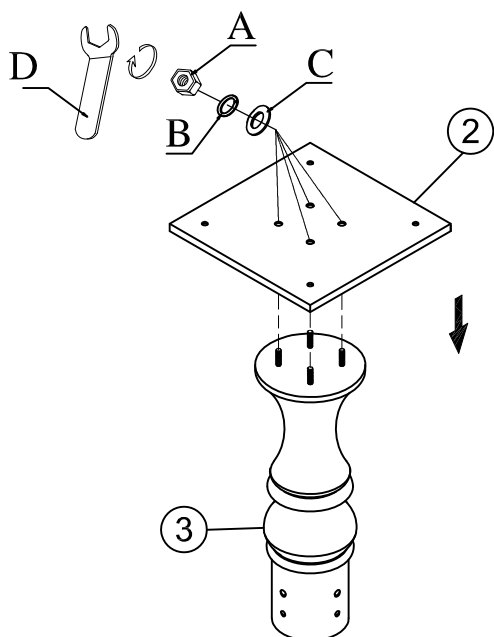


⑤

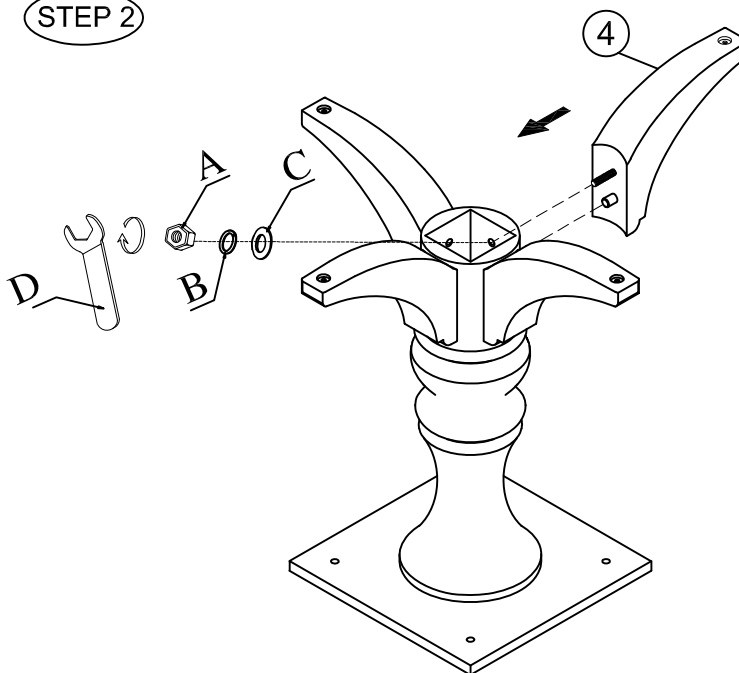
HARDWARE LIST

NO.	Drawing	Description	Q'ty
A		Hex nut (Ø1/2" x 18mm)	8pcs
B		Spring washer (Ø1/2")	8pcs
C		Flat washer (Ø1/2" x Ø25mm)	8pcs
D		Ø1/2" Wrench (19mm)	1pc
E		Allen wrench (5mm)	1pc
F		Bolt (Φ5/16" x 1-1/2")	4pcs
G		Spring washer (Ø5/16")	4pcs
H		Flat washer (Ø5/16" x 19mm)	4pcs

STEP 1



STEP 2



CLEANING INSTRUCTION

Clean the Drop Leaf Table surface with furniture polish and soft cloth.



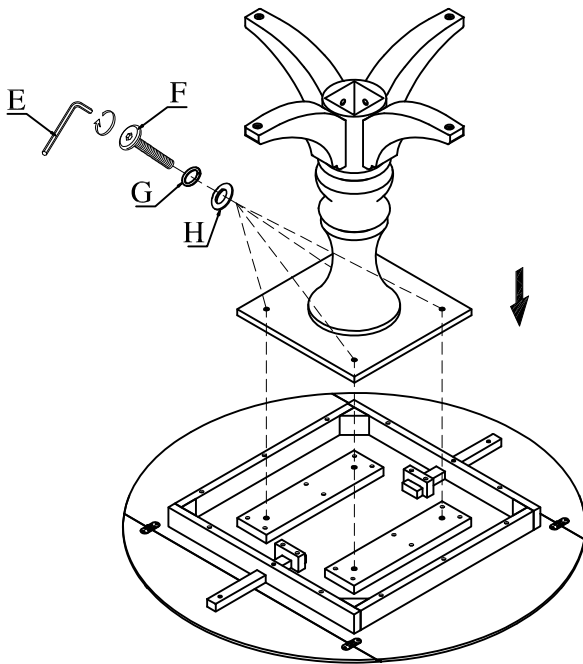
Liberty Furniture
INDUSTRIES, INC

ASSEMBLY INSTRUCTION

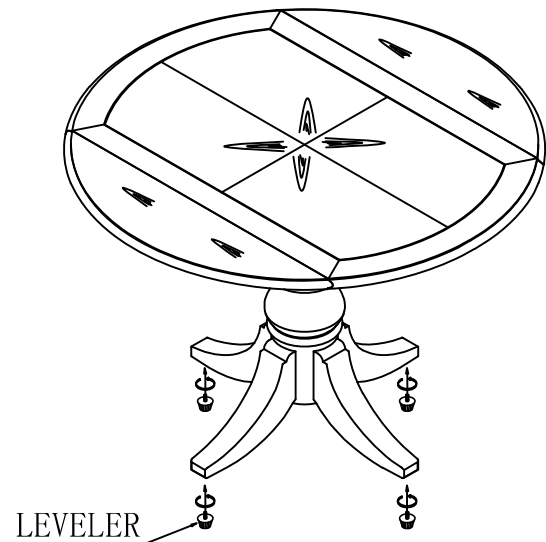
ITEM#: **244-T4444**

DESCRIPTION: **DROP LEAF TABLE**

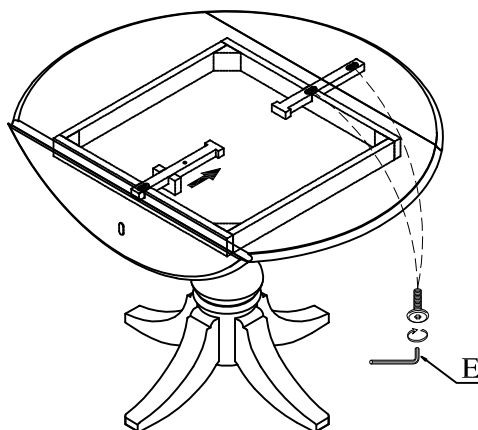
STEP 3



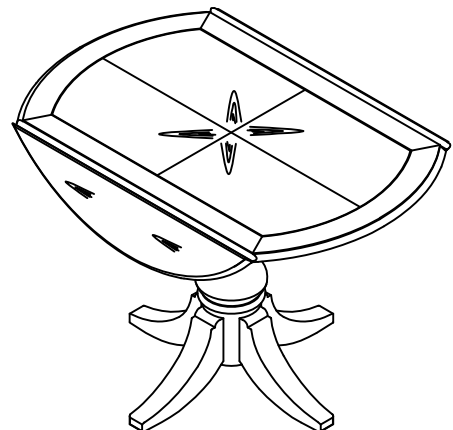
STEP 4



STEP 5



STEP 6



CLEANING INSTRUCTION

Clean the Drop Leaf Table surface with furniture polish and soft cloth.