

**Set-up Instructions for  
Cabinets and Option-Desk**



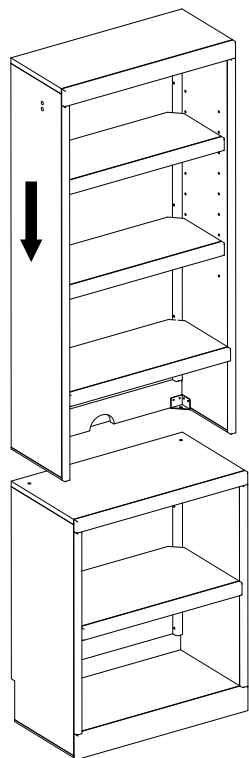
**roomandloft**

**Thank you so much for your purchase!!!**

We want to provide you with the best and fastest service possible,  
so if you need a replacement for a damaged or missing part, or if  
you have a question...

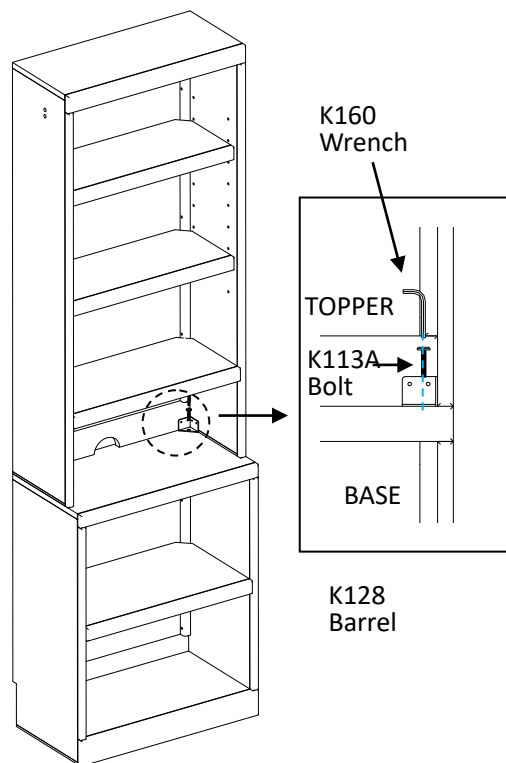
**Please Call Us at 714-455-7446 for Prompt Service.**

## Connecting the Pier Topper to the Bookcase Base, and the assembled pier to the Bed Case.



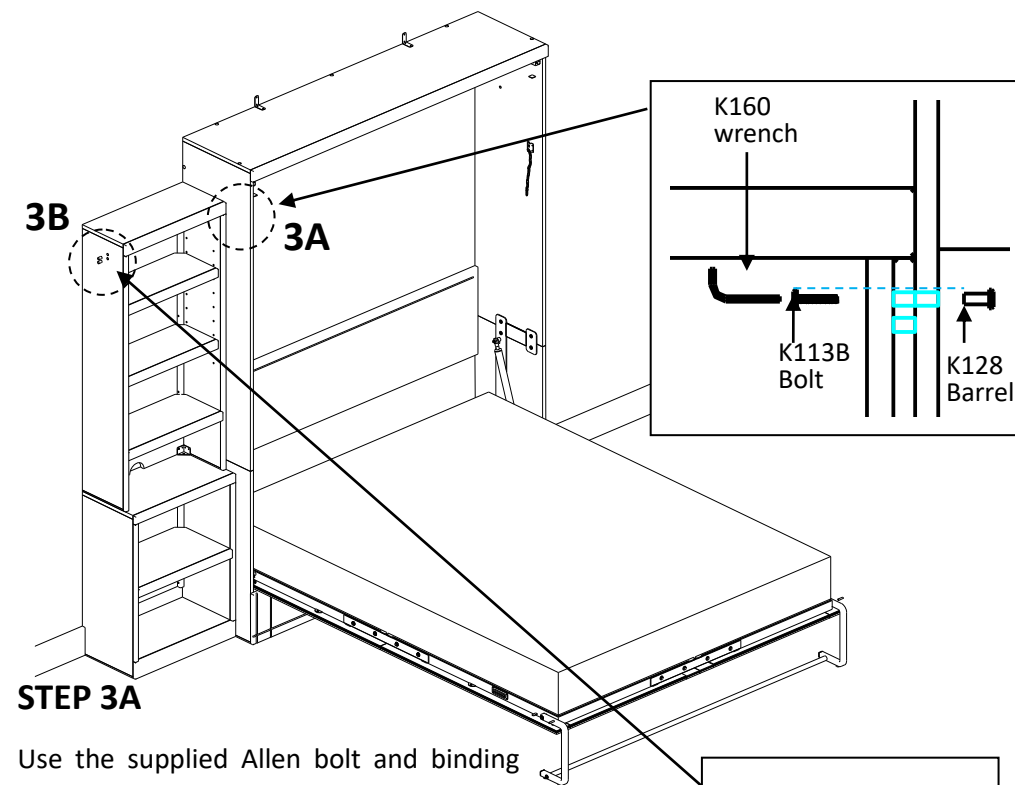
### STEP 1

Carefully place the pier topper onto the Bookcase Base, flush on the sides and back.



### STEP 2

Use the supplied Allen bolt to connect through the topper bracket and desk top, securing tightly.

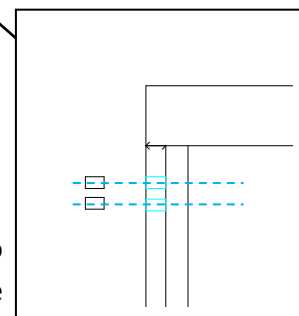


### STEP 3A

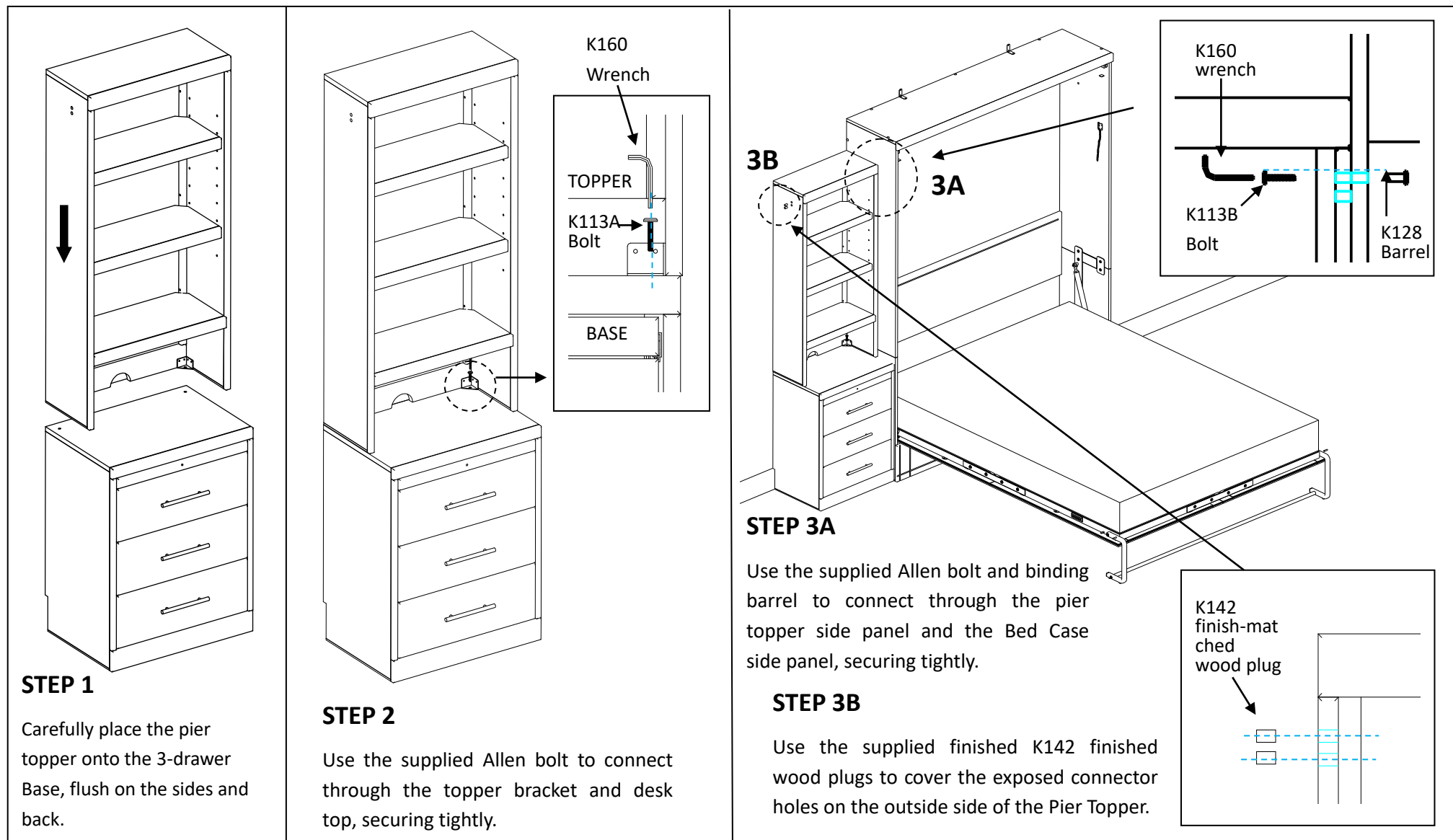
Use the supplied Allen bolt and binding barrel to connect through the pier topper side panel and the Bed Case side panel, securing tightly.

### STEP 3B

Use the supplied finished dowel plugs to cover the exposed holes on the outside side of the Pier Topper.



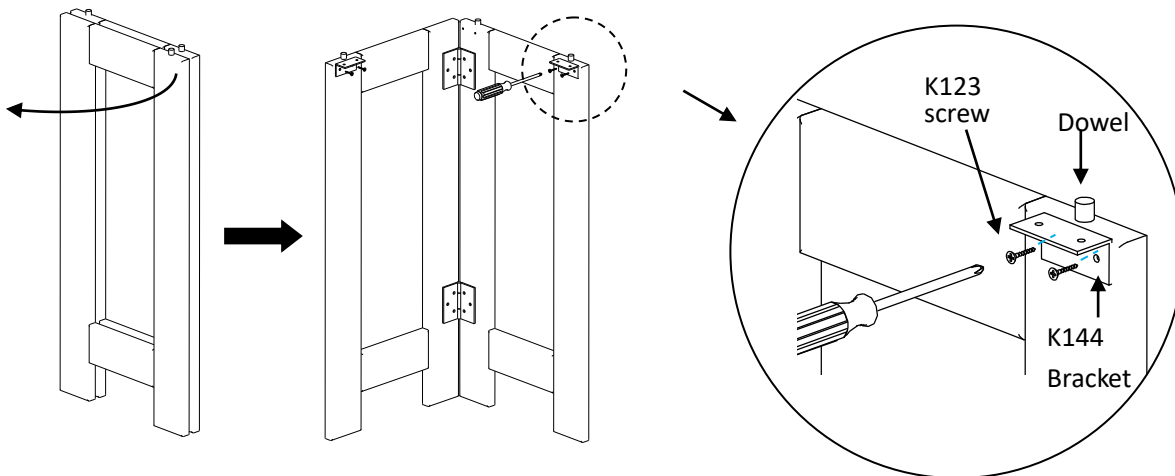
## Connecting the Pier Topper to the 3-Drawer Base, and the assembled pier to the Bed Case.



## Setting up the Option Desk page 1

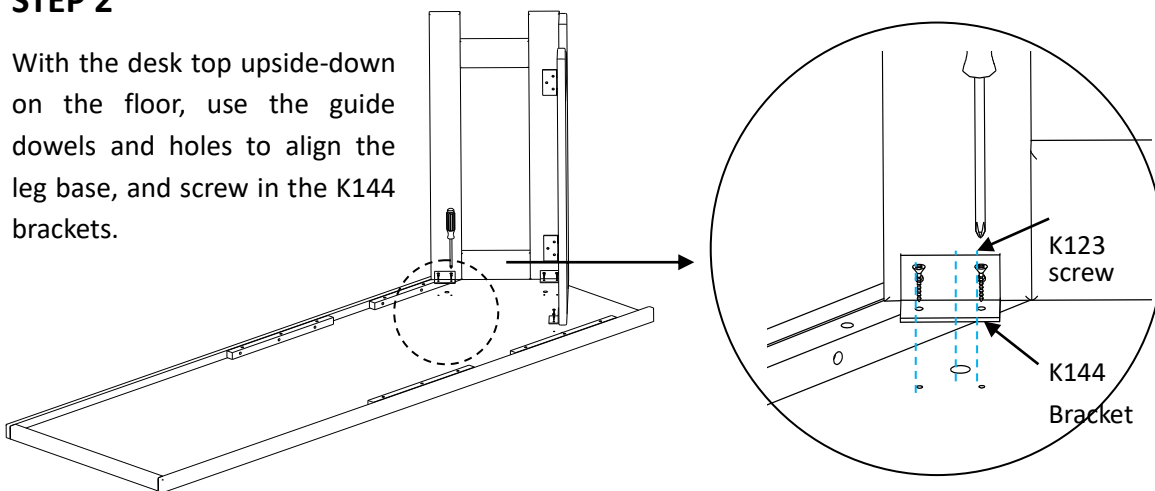
### STEP 1

Fold the Leg Base open and install the L-shaped K144 bracket on each leg as shown.

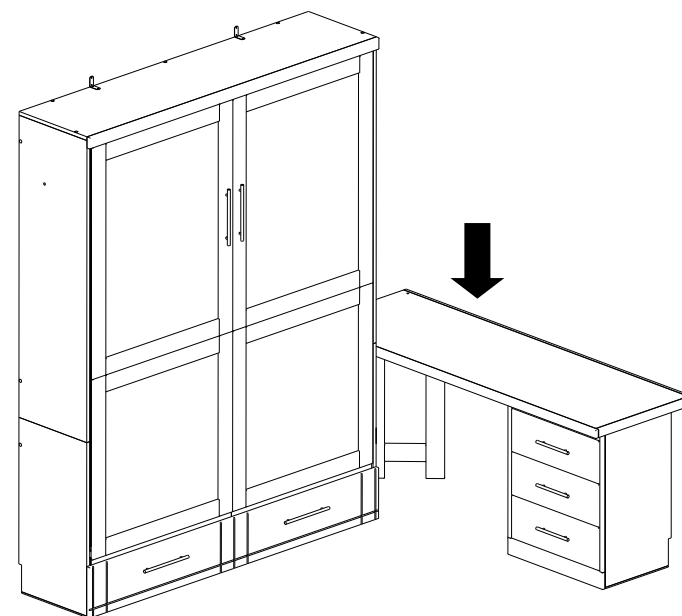


### STEP 2

With the desk top upside-down on the floor, use the guide dowels and holes to align the leg base, and screw in the K144 brackets.

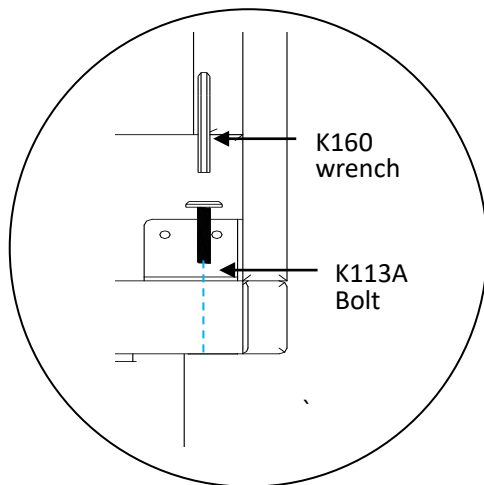
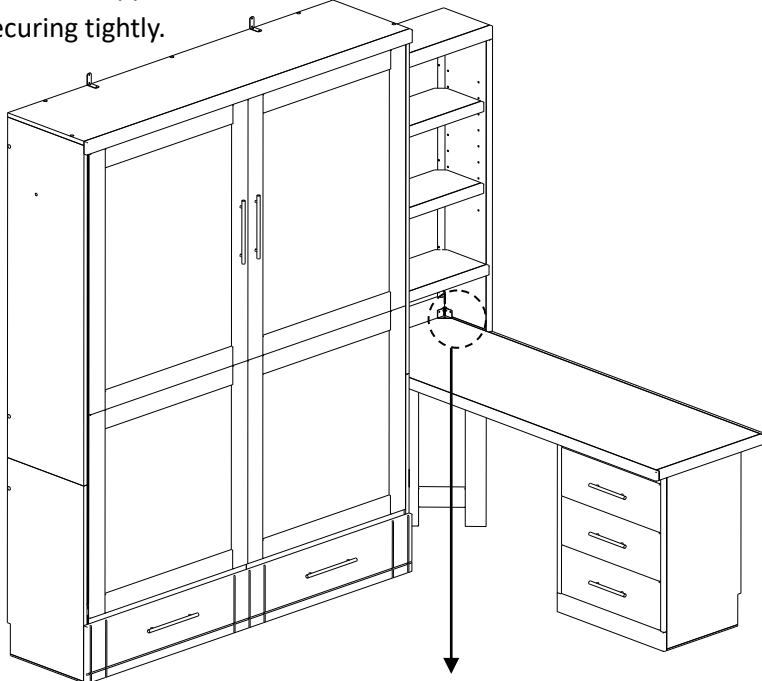


**STEP 3** Set the desk top square against the Bed Case and back to the wall, and position the 3-drawer base under the open end of the Desk



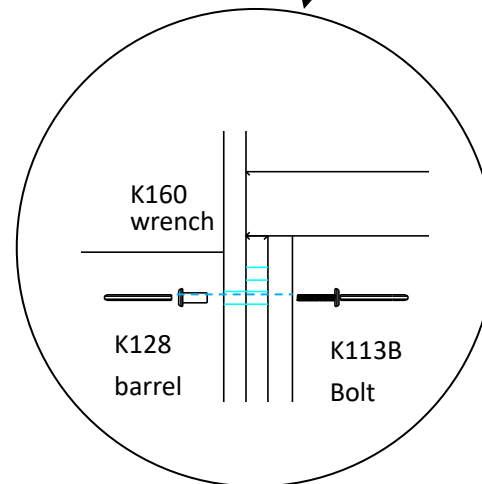
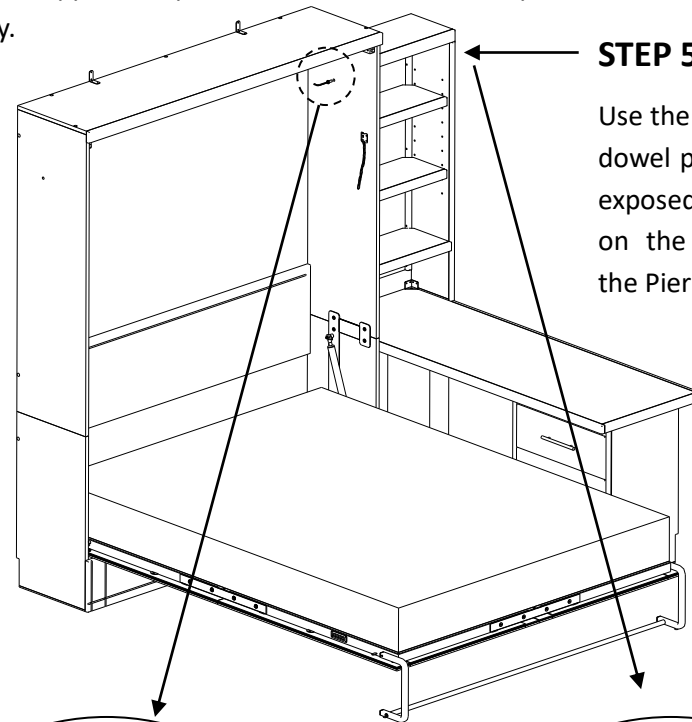
## STEP 4

Use the supplied Allen bolt to connect through the topper bracket and desk top, securing tightly.



## STEP 5A

Use the supplied Allen bolt and binding barrel to connect through the pier topper side panel and the Bed Case side panel, securing tightly.



## STEP 5B

Use the supplied finished dowel plugs to cover the exposed connector holes on the outside side of the Pier Topper.

