

FOX6306 Kenlin glide dismantle / reassembly



How to take down the Kenlin glide



Pull the Male metal kenlin glide (the one that can slide) out with force, can be take it off.

How to reassembly the Kenlin glide



Step 1 : Remove the back panel

Remove all the wood screws from the back panel one by one
(note: keep all the wood screws, because the product shall be locked back when the metal glide is reassembled)

- 1, quick-drying adhesive
- 2. a blade
- 3. bamboo toothpick x 2
- 4. Wooden screws which take off from the original male glide
- 5. a male metal glide



Prepare above tools



Step 2
Insert the toothpick into the hole and run into quick-drying adhesive
p.s. The main purpose of adding bamboo toothpick is to fill the hole, and strengthen the wood screws so that the wood screw can be more firmly locked into the hole



Step 3
Place the blade along the wooden frame and cut off the bamboo toothpick



Note : that this end without the plastic parts is the back side



Step 4
Put male metal glide back in place

Step 5
Lock it in with a wooden screw, fix it.

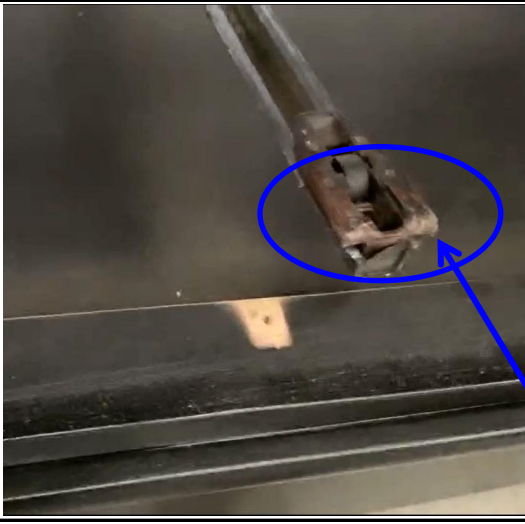


Step 6
Apply some force by hand and make sure the metal glide is fixed well

The look of the inner frame of back side



Turn to the front side



Note : that the end with the plastic part is the front side



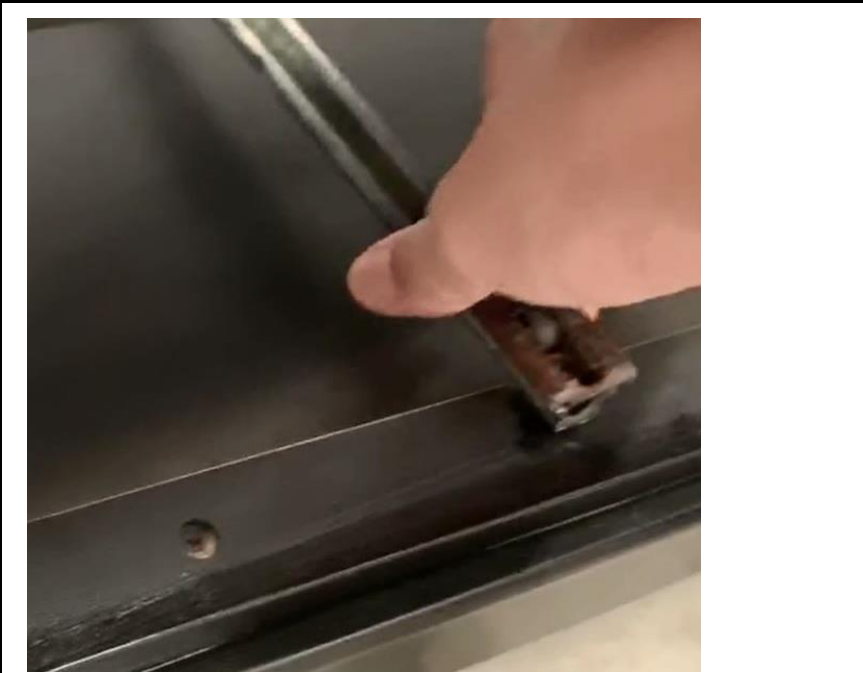
Step 7
Repeat the previous method/step, to insert the toothpick into the hole and run into quick-drying adhesive



Step 8
Place the blade along the wooden frame and cut off the bamboo toothpick



Step 9
Lock it in with a wooden screw, fix it.



Step 10
Apply some force by hand and make the metal glide is fixed well



Step 11
fit the male metal glide and female groove
(Make sure the male glide is aligned with the female groove)



Step 12
need to use a bit more force to push the drawer into the
cabine

Step 13
put the drawer back very smoothly



Step 14
Reassemble the previously removed back panel to the cabinet



Reassembled is completed