



Liberty Furniture
INDUSTRIES, INC

LIBERTY FURNITURE

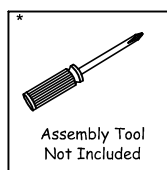
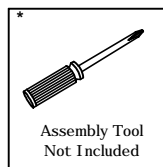
ASSEMBLY INSTRUCTION

ITEM # : 423-BR40 / 523-BR40

DESCRIPTION : 5 DRAWER CHEST

Thank you for purchasing this quality product. Be sure to check all packing material carefully for small parts which may have come loose inside the carton during shipment. Identify and count all parts and compare with the parts list below:

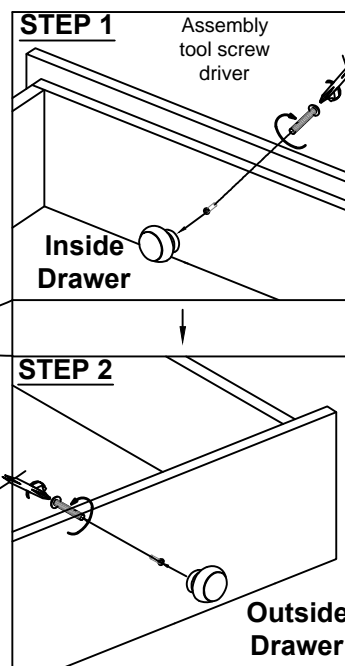
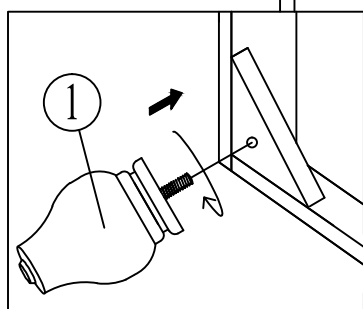
Component List		
NO.	Descriptions	Qty.
1	Bun Foot (Packed Inside Drawer)	4
2	Tipping Restraint	1



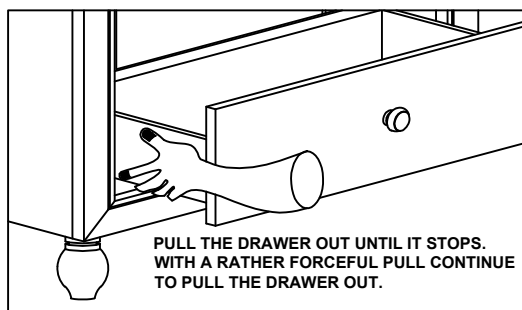
Affix to wall
behind Chest

Wall

2

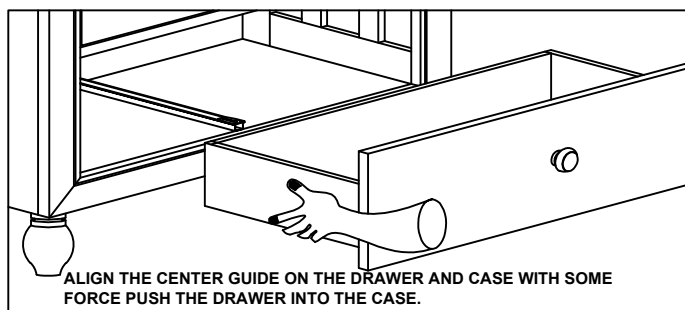


TO REMOVE THE DRAWER:



PULL THE DRAWER OUT UNTIL IT STOPS.
WITH A RATHER FORCEFUL PULL CONTINUE
TO PULL THE DRAWER OUT.

TO INSTALL THE DRAWER:



ALIGN THE CENTER GUIDE ON THE DRAWER AND CASE WITH SOME
FORCE PUSH THE DRAWER INTO THE CASE.

ASSEMBLY TIPS:

1. Remove hardware from box and sort by size.
2. Please check to see that all hardware and parts are present prior start of assembly.
3. Please follow attached instructions in the same sequence as numbered to assure fast and easy assembly.

⚠ WARNING!

1. Don't attempt to repair or modify parts that are broken or defective. Please contact the store immediately.
2. This product is for home use only and not intended for commercial establishments.