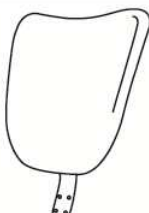
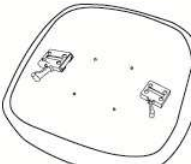

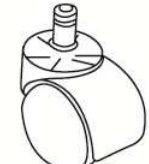


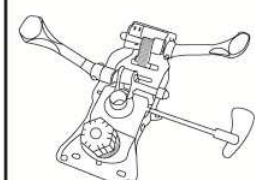

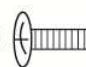
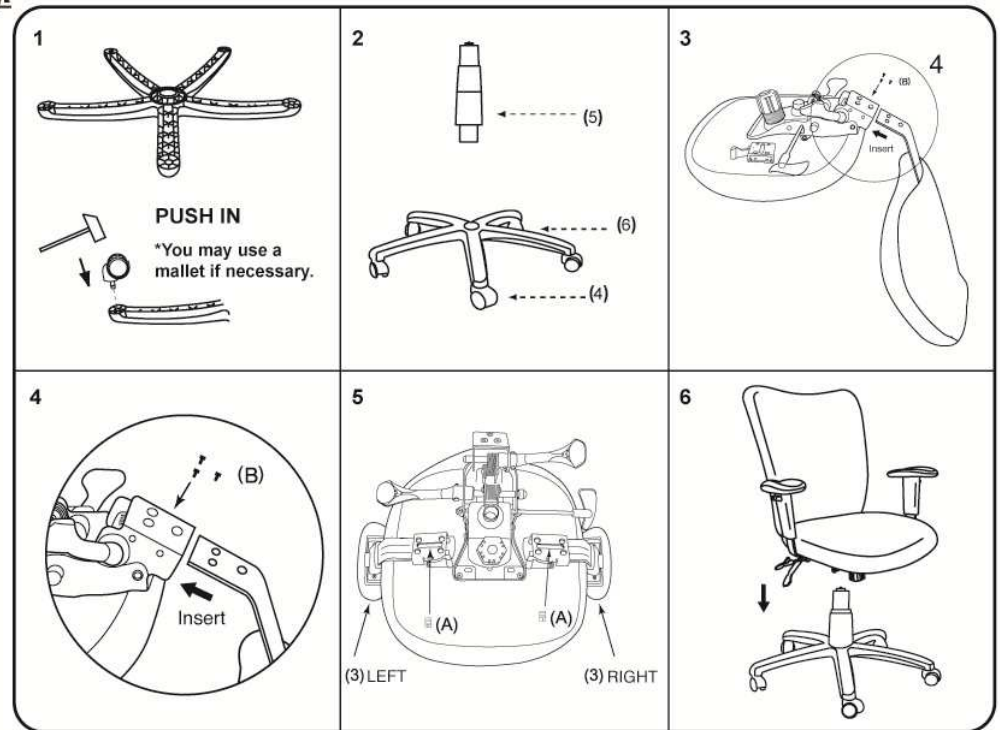


**Please unscrew all hardware from cushion before assembly.**  
**Por favor de destornillar todos los tornillos del cojín antes de ensamblar la silla.**

MODEL : B2007

(1)x1  Back	(2)x1  Seat	(3)x1 (L)x1 (R)  Right & Left Arm
(4)x5  Caster	(5)x1  Gas Lift W/ Cover	(6)x1  Nylon Base
(7)x1  Mechanism	<p>(A)x2  M10 ARM BRACKET SCREW</p> <p>(B)x3  M8*25 L-BAR SCREW</p>	



**Insert and loosely tighten all screws. When assembly is completed, fully tighten all screws before using. This chair is only intended for sitting. Any other use will void the warranty.**



**Customer Service Hotline: 1-800-593-1888**  
**For further assembly instructions,**  
**please visit our website at [www.bosschair.com](http://www.bosschair.com)**

